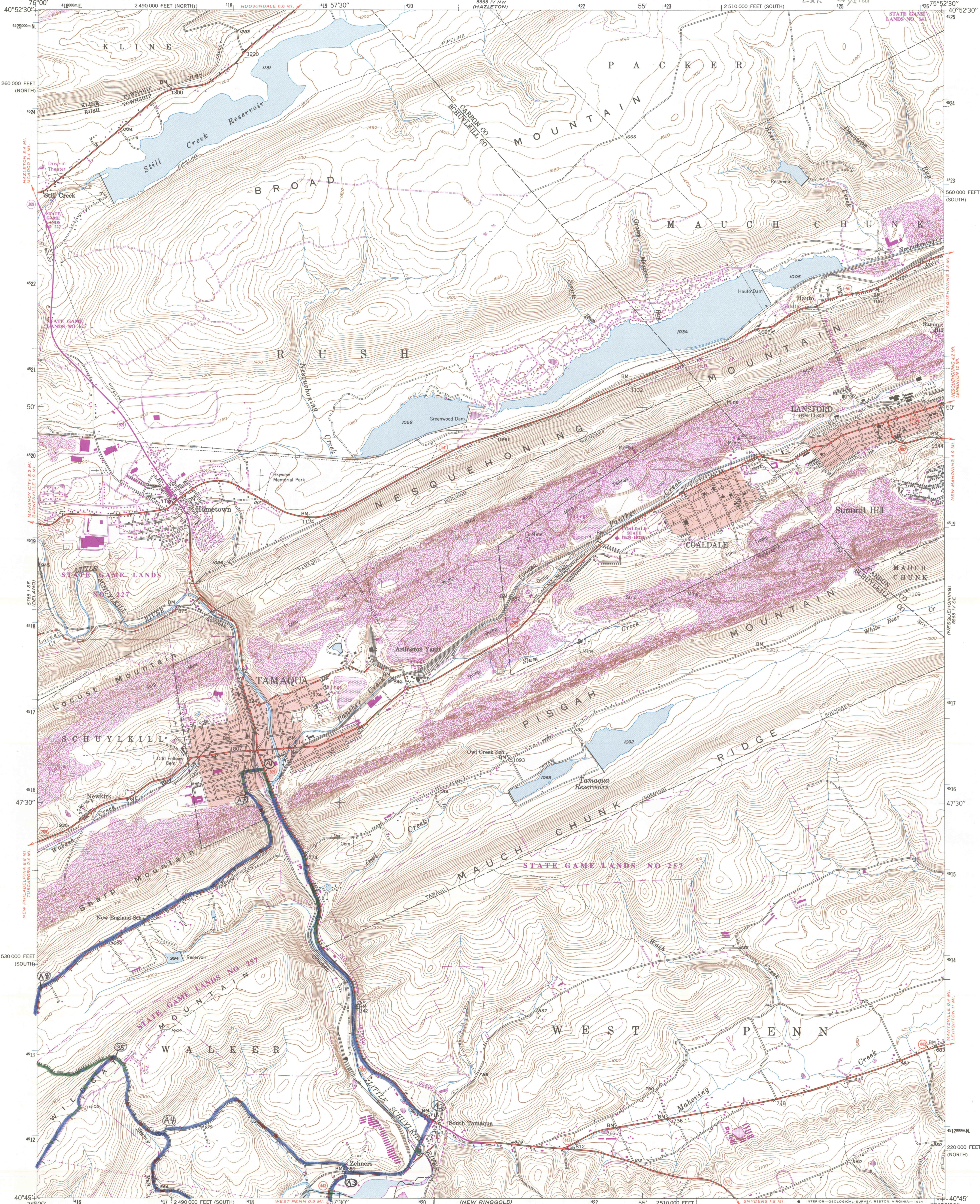
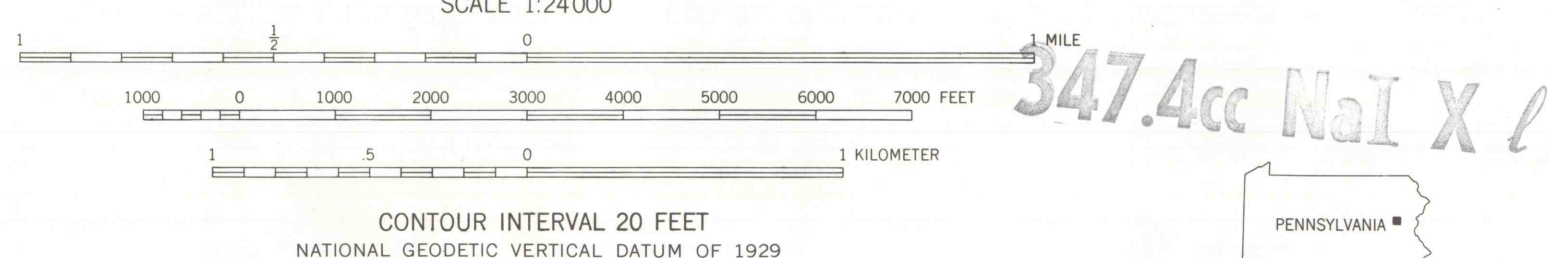
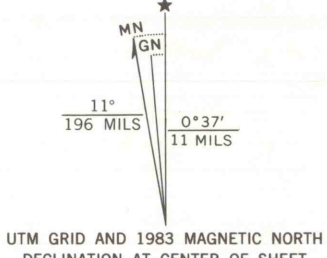


Ext. Crystal

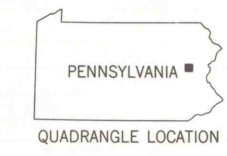


Mapped, edited, and published by the Geological Survey
Control by USGS, NOS/NOAA, and Pennsylvania
Department of Highways
Topography by photogrammetric methods from aerial
photographs taken 1942. Field checked 1947
Polyconic projection. 10,000-foot grid ticks based on Pennsylvania
coordinate system, south and north zones
1000-meter Universal Transverse Mercator grid ticks,
zone 18, shown in 1927 North American Datum
To place on the predicted North American Datum 1983
move the projection lines 6 meters south and
30 meters west as shown by dashed corner ticks
Red tint indicates areas in which only landmark buildings are shown
There may be private inholdings within the boundaries of
the National or State reservations shown on this map



ROAD CLASSIFICATION

Heavy-duty	Light-duty
Medium-duty	Unimproved dirt
U.S. Route	State Route



TAMAQUA, PA.
40075-G8-TF-024
1947
PHOTOREVISED 1983
DMA 5865 IV SW - SERIES V851

THIS MAP COMPLIES WITH NATIONAL MAP ACCURACY STANDARDS
FOR SALE BY U. S. GEOLOGICAL SURVEY, RESTON, VIRGINIA 22092
A FOLDER DESCRIBING TOPOGRAPHIC MAPS AND SYMBOLS IS AVAILABLE ON REQUEST

Revisions shown in purple and woodland compiled in cooperation
with Commonwealth of Pennsylvania agencies from aerial photographs
taken 1981 and other sources. This information not field checked
Map edited 1983