

Prepared in 1954 and 1955 from field investigations by members of the U. S. Geological Survey and from data supplied by various mining companies and individuals.

STRUCTURAL CROSS SECTIONS

Scale: 1" = 1000'

EXPLANATION FOR CROSS SECTIONS

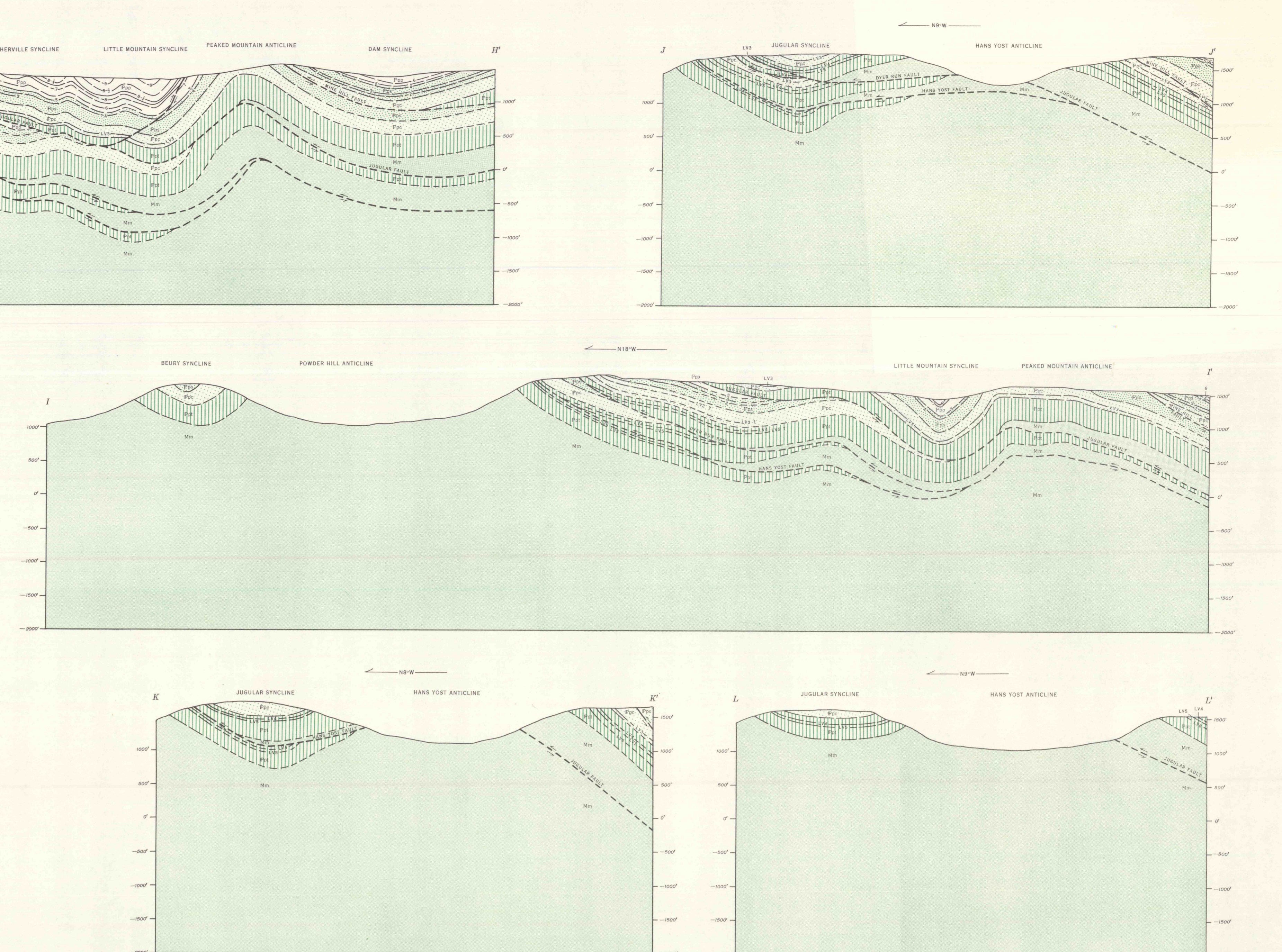
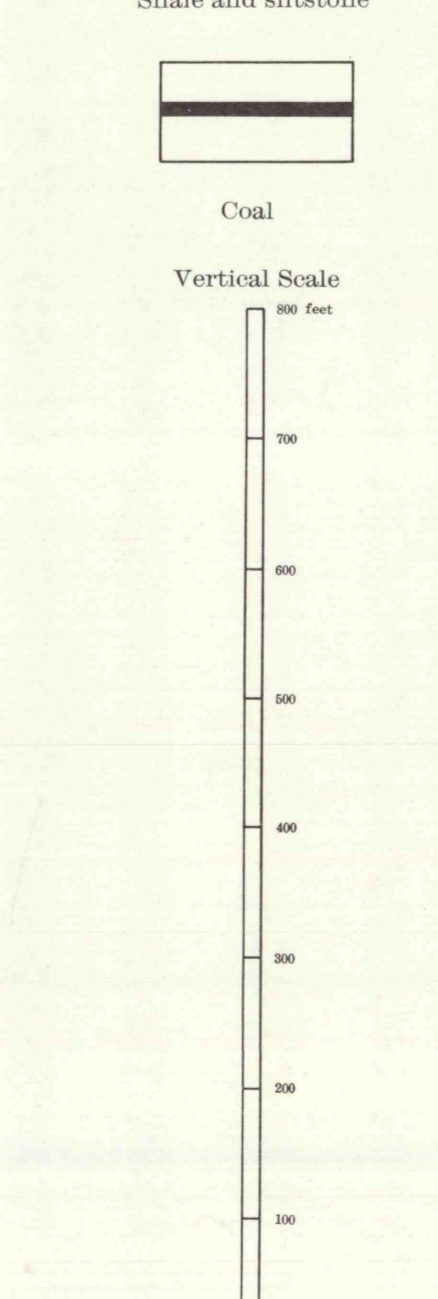
- Fp Post-Pottsville rocks
- Pp Pottsville rocks
- Shary Mountains member
- Psc Schuylkill member
- Hs Hunting Run member
- Mc March Creek formation
- Coal bed
- Contact
- Inferred contact
- Fault showing relative movement

COMPOSITE STRATIGRAPHIC SECTION

System	Formation	Section	Coal bed	Interval in feet
QUATERNARY	Alluvium	Fault	No. 21	85-100
		Patton Run	No. 22	95-101
		Tunnel	No. 23	135-175
		Shary Mountains	No. 24	80-90
		Little Trinity	No. 25	50-80
		Upper Peachtree	No. 26	40-70
		Tray	No. 27	50-120
		Little Chance	No. 28	50-100
		Clifton	No. 29	50-100
		Little Chance	No. 30	50-100
		Diapond	No. 31	50-100
		Diapond	No. 32	50-100
		Diapond	No. 33	50-100
		Diapond	No. 34	50-100
		Diapond	No. 35	50-100
PENNSYLVANIAN	Pottsville	Little Orchard	No. 36	20-35
		Orchard	No. 37	50-100
		Prattville	No. 38	50-100
		Holmes	No. 39	50-100
		Lower Peachtree	No. 40	50-100
		Tray	No. 41	50-100
		Middle Salt	No. 42	50-100
		Upper Salt	No. 43	50-100
		Bottom Salt	No. 44	50-100
		Diapond	No. 45	50-100
		Diapond	No. 46	50-100
		Diapond	No. 47	50-100
		Diapond	No. 48	50-100
		Diapond	No. 49	50-100
		POST-POTTSVILLE	Pottsville	Black Mountain
Little Mountain	No. 51			20-70
Scotty Spur	No. 52			20-70
South Spur	No. 53			20-70
Lynch Valley	No. 54			20-70
Lynch Valley	No. 55			20-70
Lynch Valley	No. 56			20-70
Lynch Valley	No. 57			20-70
Lynch Valley	No. 58			20-70
Lynch Valley	No. 59			20-70
Lynch Valley	No. 60			20-70
Lynch Valley	No. 61			20-70
Lynch Valley	No. 62			20-70
Lynch Valley	No. 63			20-70
Lynch Valley	No. 64			20-70

EXPLANATION FOR COMPOSITE STRATIGRAPHIC SECTION

- Conglomerate
- Conglomeratic sandstone
- Sandstone
- Shale and siltstone
- Coal



Diagrammatic section W: Shows stratigraphic relations of uppermost Mississippian rocks and Pennsylvanian rocks in the Heckscherville syncline. Includes notes on coal bed No. 11 and No. 5.

Diagrammatic section X: Shows stratigraphic relations of uppermost Mississippian rocks and Pennsylvanian rocks in the Heckscherville syncline. Includes notes on coal bed No. 11 and No. 5.

Diagrammatic section Y: Shows stratigraphic relations of uppermost Mississippian rocks and Pennsylvanian rocks in the Heckscherville syncline. Includes notes on coal bed No. 11 and No. 5.

Diagrammatic section Z: Shows stratigraphic relations of uppermost Mississippian rocks and Pennsylvanian rocks in the Heckscherville syncline. Includes notes on coal bed No. 11 and No. 5.

Diagrammatic section K: Shows stratigraphic relations of uppermost Mississippian rocks and Pennsylvanian rocks in the Heckscherville syncline. Includes notes on coal bed No. 11 and No. 5.

Diagrammatic section L: Shows stratigraphic relations of uppermost Mississippian rocks and Pennsylvanian rocks in the Heckscherville syncline. Includes notes on coal bed No. 11 and No. 5.

Diagrammatic section I: Shows stratigraphic relations of uppermost Mississippian rocks and Pennsylvanian rocks in the Heckscherville syncline. Includes notes on coal bed No. 11 and No. 5.

Diagrammatic section J: Shows stratigraphic relations of uppermost Mississippian rocks and Pennsylvanian rocks in the Heckscherville syncline. Includes notes on coal bed No. 11 and No. 5.

Diagrammatic section W: Shows stratigraphic relations of uppermost Mississippian rocks and Pennsylvanian rocks in the Heckscherville syncline. Includes notes on coal bed No. 11 and No. 5.

Diagrammatic section X: Shows stratigraphic relations of uppermost Mississippian rocks and Pennsylvanian rocks in the Heckscherville syncline. Includes notes on coal bed No. 11 and No. 5.

Diagrammatic section Y: Shows stratigraphic relations of uppermost Mississippian rocks and Pennsylvanian rocks in the Heckscherville syncline. Includes notes on coal bed No. 11 and No. 5.

Diagrammatic section Z: Shows stratigraphic relations of uppermost Mississippian rocks and Pennsylvanian rocks in the Heckscherville syncline. Includes notes on coal bed No. 11 and No. 5.

Diagrammatic section K: Shows stratigraphic relations of uppermost Mississippian rocks and Pennsylvanian rocks in the Heckscherville syncline. Includes notes on coal bed No. 11 and No. 5.

Diagrammatic section L: Shows stratigraphic relations of uppermost Mississippian rocks and Pennsylvanian rocks in the Heckscherville syncline. Includes notes on coal bed No. 11 and No. 5.

Diagrammatic section I: Shows stratigraphic relations of uppermost Mississippian rocks and Pennsylvanian rocks in the Heckscherville syncline. Includes notes on coal bed No. 11 and No. 5.

Diagrammatic section J: Shows stratigraphic relations of uppermost Mississippian rocks and Pennsylvanian rocks in the Heckscherville syncline. Includes notes on coal bed No. 11 and No. 5.

Diagrammatic section N: Shows stratigraphic relations of uppermost Mississippian rocks and Pennsylvanian rocks from Gordon syncline to the western part of the Forestville syncline. Includes notes on coal bed No. 11 and No. 5.

Diagrammatic section O: Shows stratigraphic relations of uppermost Mississippian rocks and Pennsylvanian rocks from Gordon syncline to the western part of the Forestville syncline. Includes notes on coal bed No. 11 and No. 5.

Diagrammatic section P: Shows stratigraphic relations of uppermost Mississippian rocks and Pennsylvanian rocks from Gordon syncline to the western part of the Forestville syncline. Includes notes on coal bed No. 11 and No. 5.

Diagrammatic section Q: Shows stratigraphic relations of uppermost Mississippian rocks and Pennsylvanian rocks from Gordon syncline to the western part of the Forestville syncline. Includes notes on coal bed No. 11 and No. 5.

EXPLANATION FOR DIAGRAMMATIC SECTIONS

- Conglomerate
- Conglomeratic sandstone
- Sandstone
- Shale and siltstone
- Coal bed