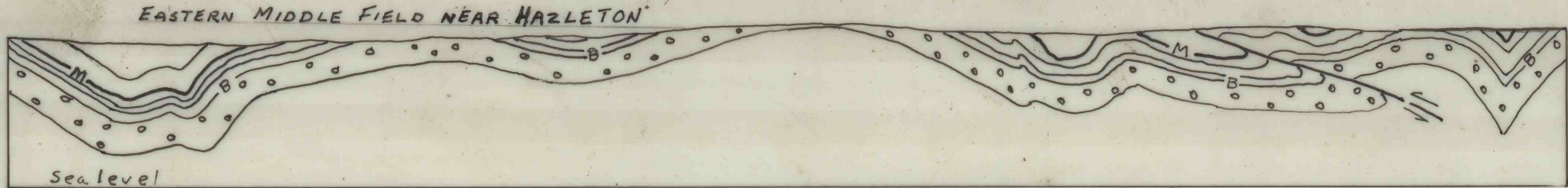
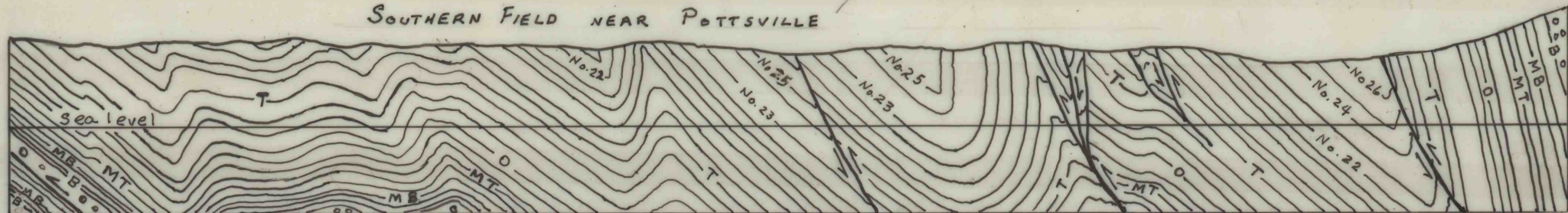
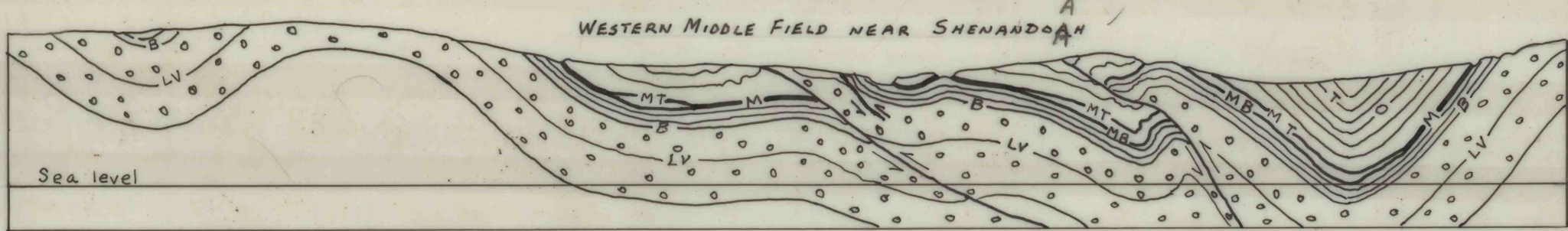


(From M.J. Bergin, written communication, Jan. 1966)

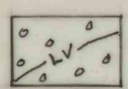


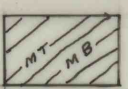
(Modified from Ashburner, 1884)




(From G.H. Wood, Jr., written communication, Jan. 1966)

[Cross sections looking east]

 Pottsville Formation  
LV, Lykens Valley coal bed

 Lewellyn Formation showing selected coal beds

B, Buck Mountain R, Red Ash M, Mammoth  
MB, Mammoth Bottom Split MT, Mammoth Top Split  
LP, Lower Pittston UP, Upper Pittston O, Orchard  
H, Hillman T, Tracy SI, Snake Island  
For numbered beds refer to columnar sections (Fig. 15)

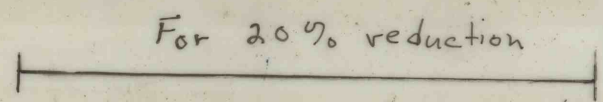
 Fault showing relative movement

Horizontal and vertical scale  
0 1000 2000 3000 4000 Feet

FIGURE 1A. Generalized cross sections of the Pennsylvania anthracite fields

22

see corrections

For 20% reduction  Reduce this line

20% 10 hrs

8070