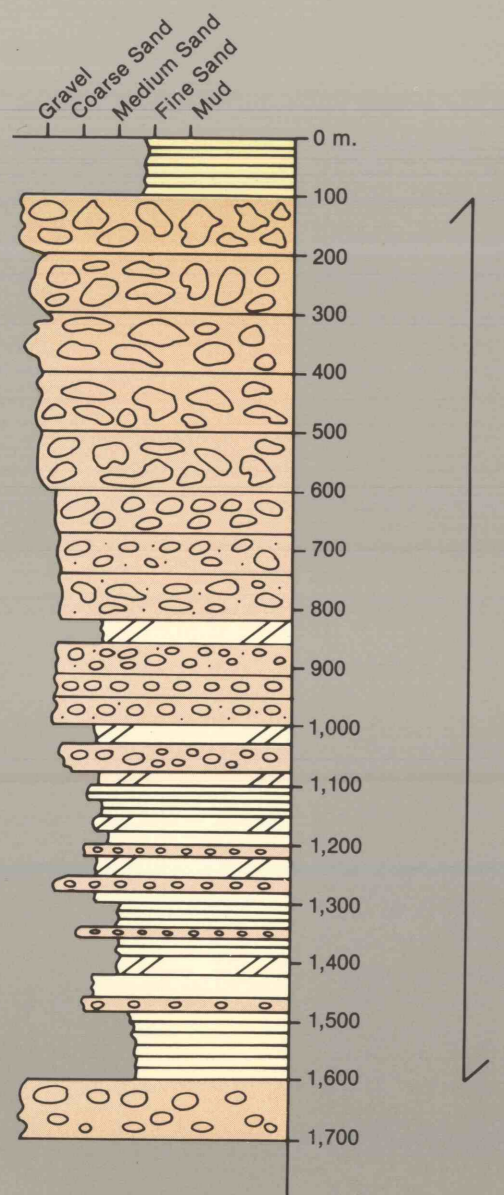


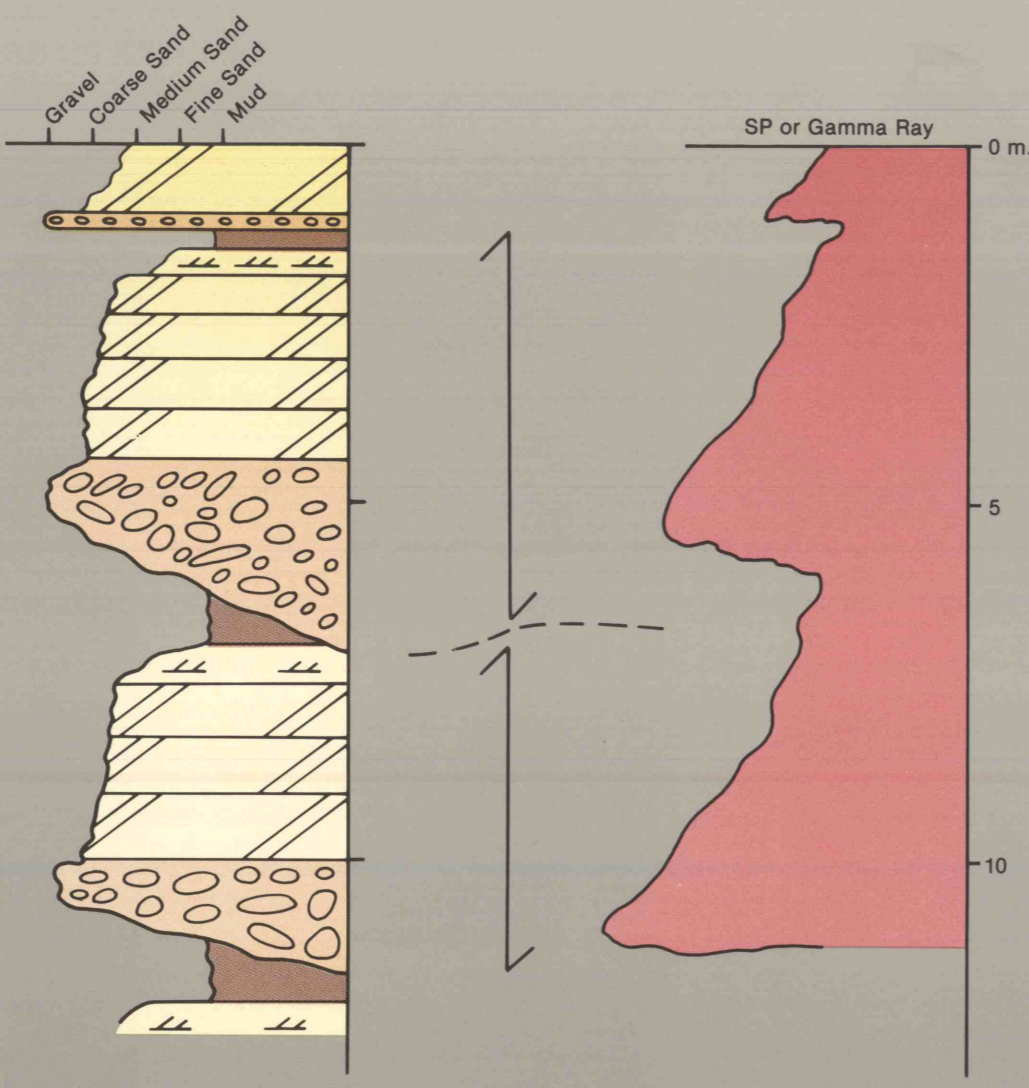
VERTICAL SEQUENCES AND LOG SHAPES OF MAJOR SANDSTONE RESERVOIR SYSTEMS

George deVries Klein, University of Illinois at Urbana-Champaign



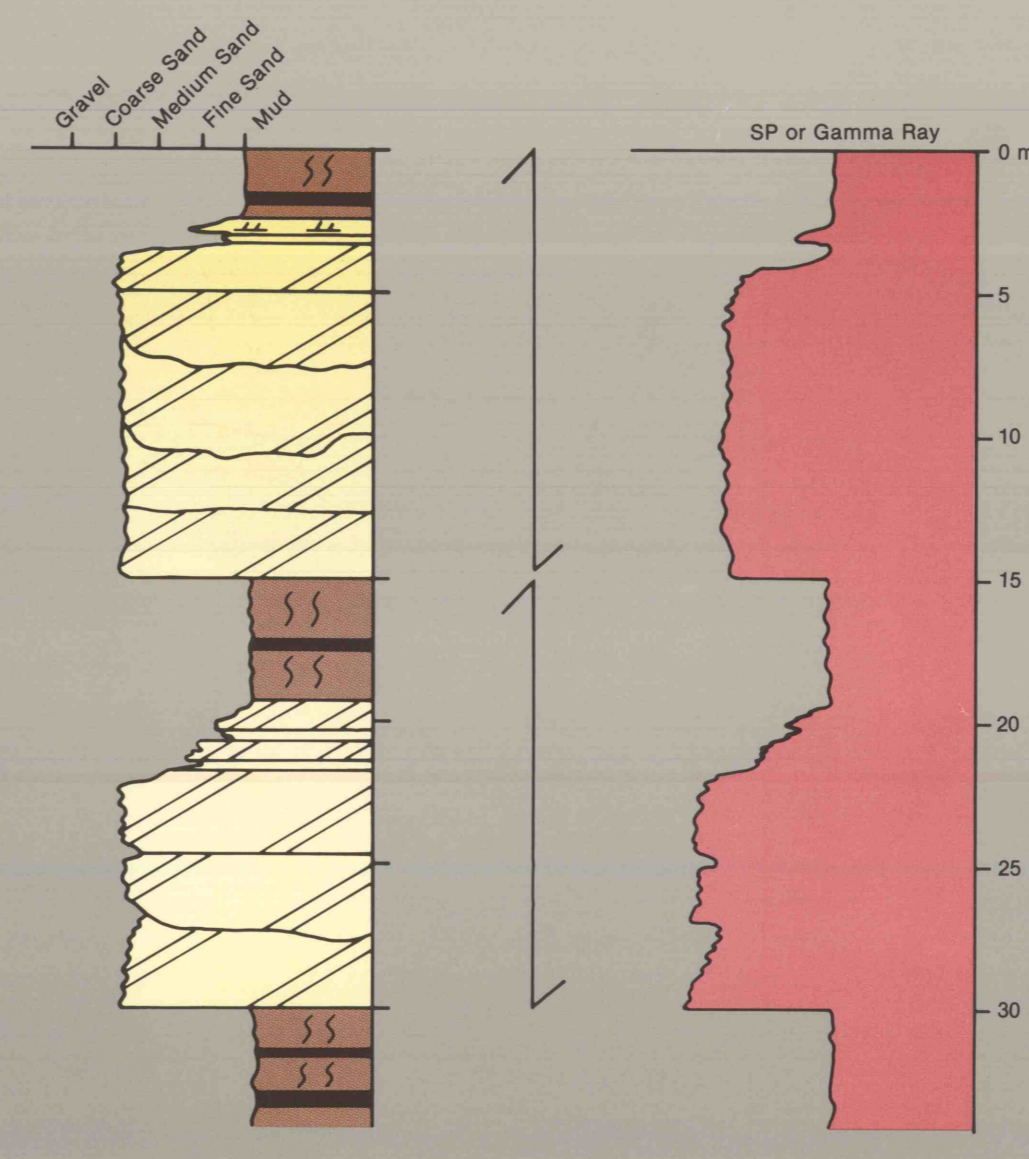
Alluvial Fan

REFERENCE: Steel, R.J., 1976, *Tectonophysics*, 36, 207-224.



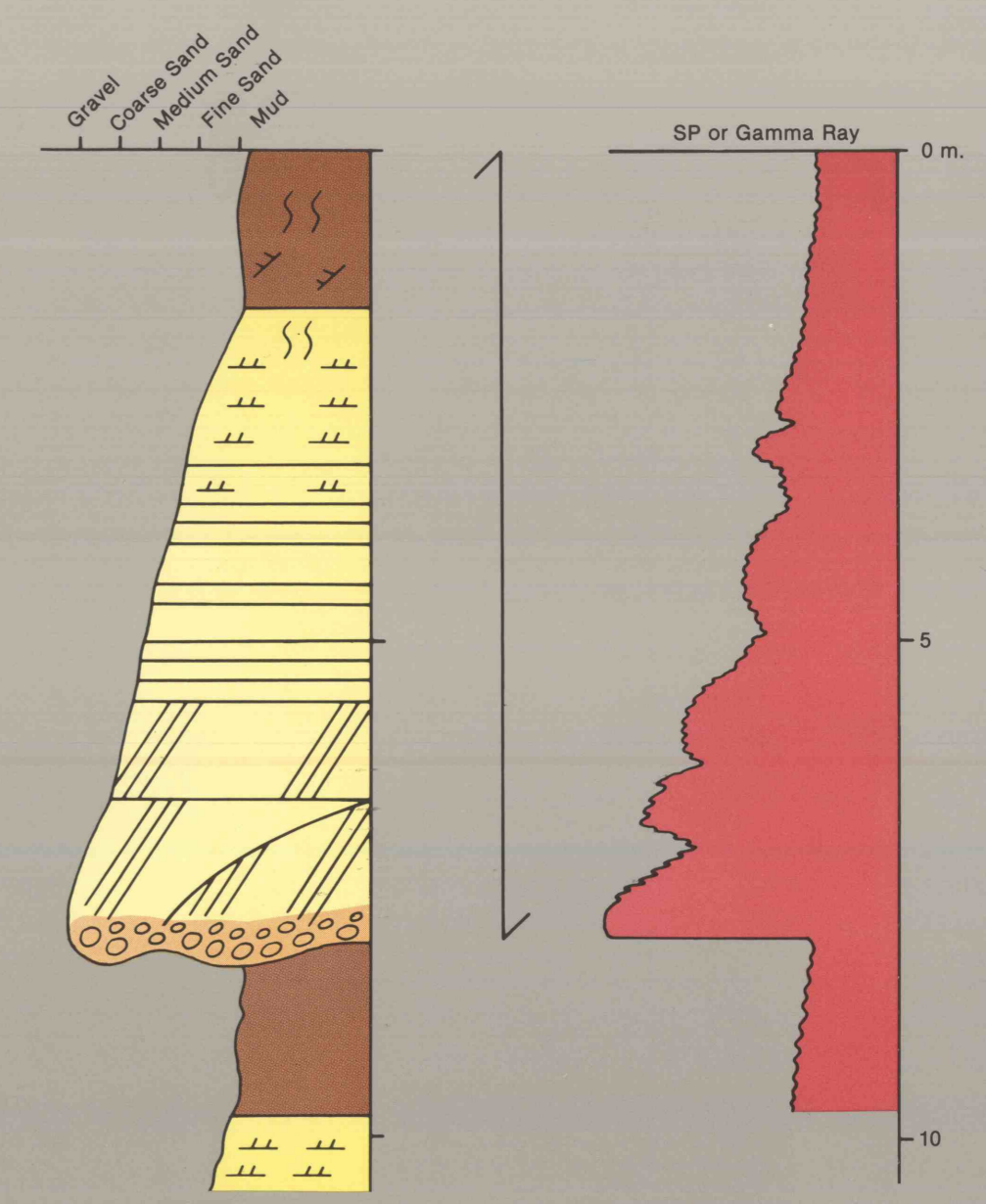
Braided Stream

REFERENCES: Miall, A.D., 1977, *Earth Sci. Rev.*, 13, 1-62; Palomino-Cardenas, J.R., 1976, Unpub. PhD dissertation, Univ. of Illinois, 111p.



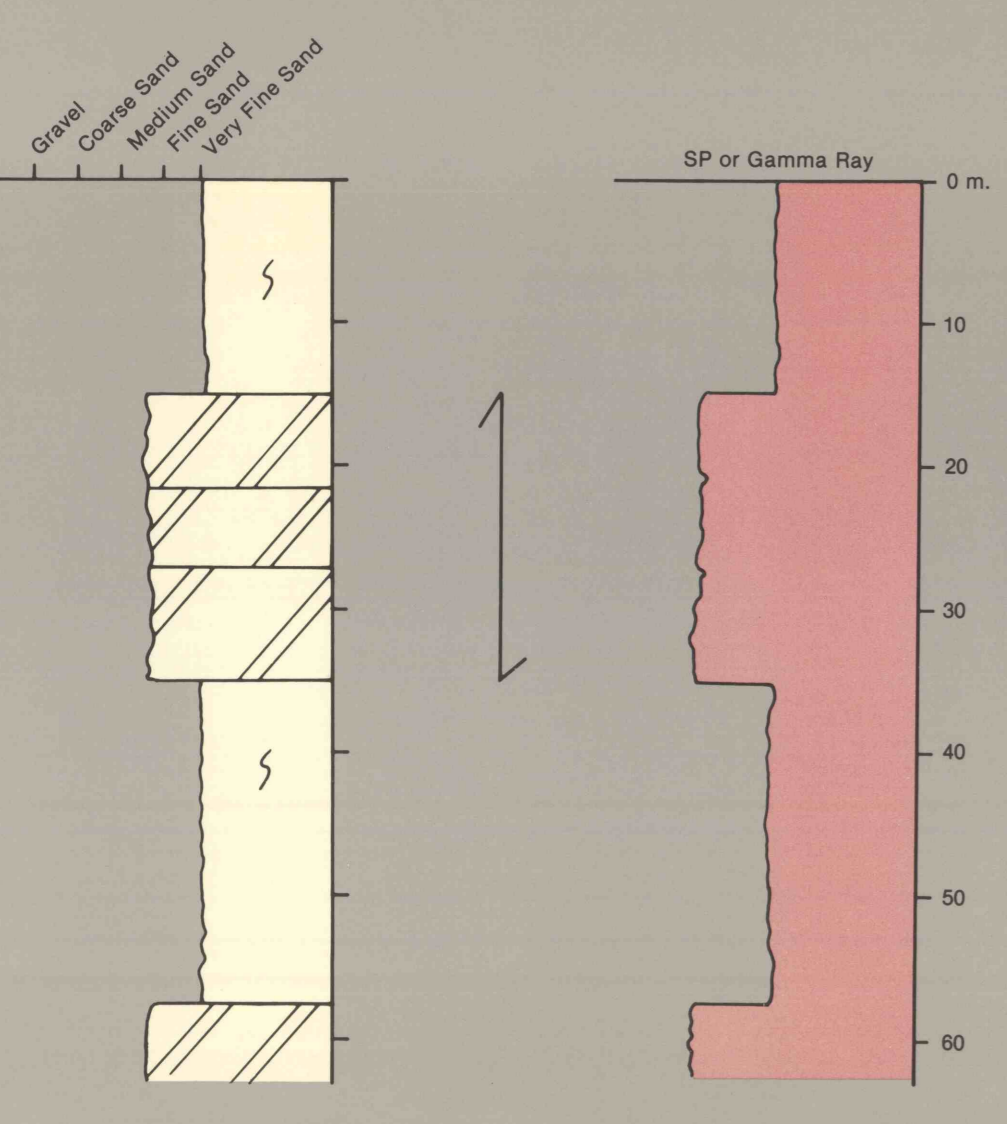
Anastomosing Stream

REFERENCE: Putnam, P.E. and Oliver, T.A., 1980, *Can. Petroleum Geol. Bull.*, 28, 489-508.



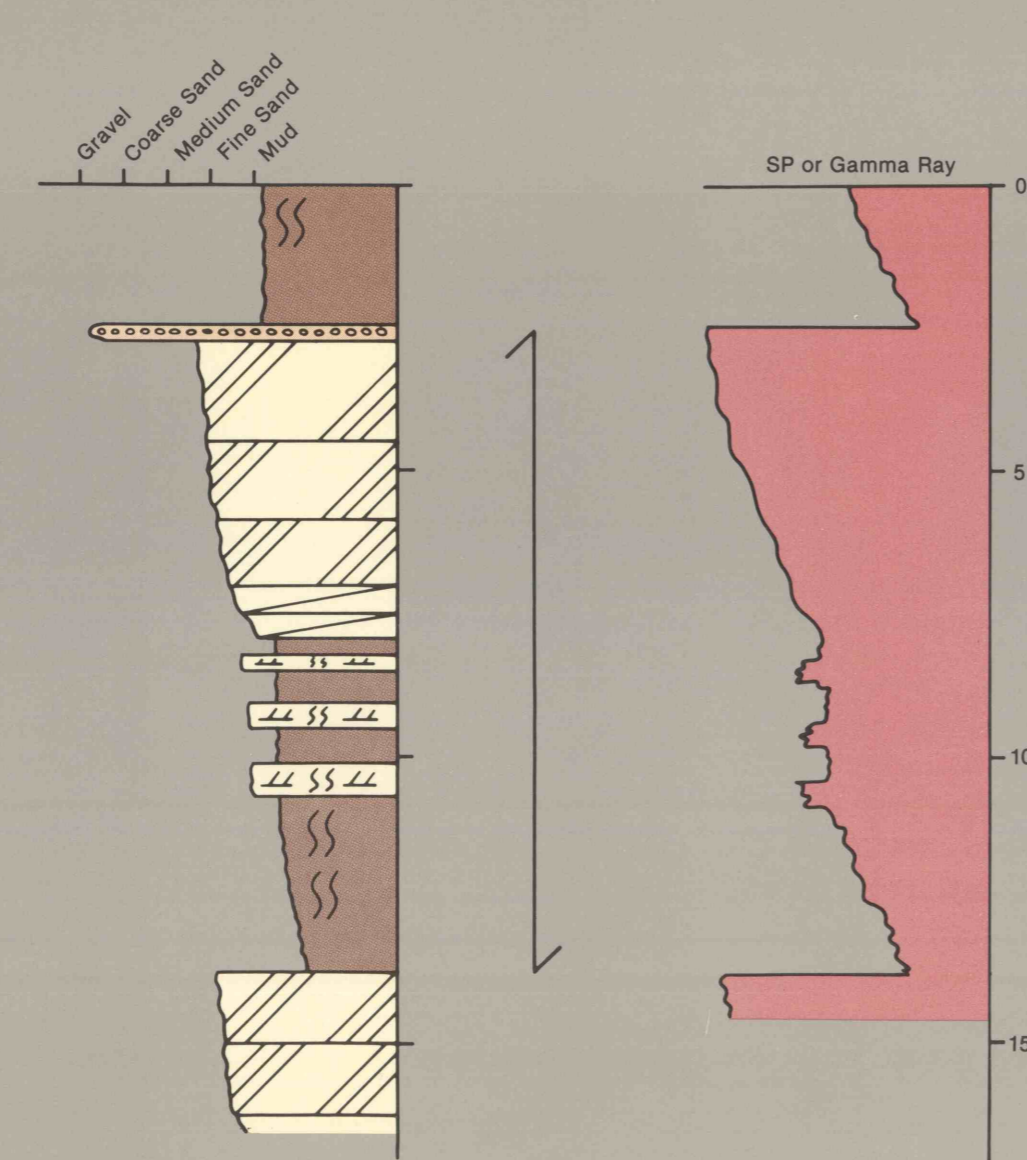
Meandering Stream

REFERENCES: Allen, J.R.L., 1963, *Geol. en. Mijnb.*, 42, 223-228; Bernard, H.A., Major, C.F. Jr., Parrott, B.S., and LeBlanc, R.J., Texas Bureau of Econ. Geol. Guidebook, No. 11; Berg, R.R., 1988, *Am. Assoc. Petroleum Geol. Bull.*, 52, 2116-2122.



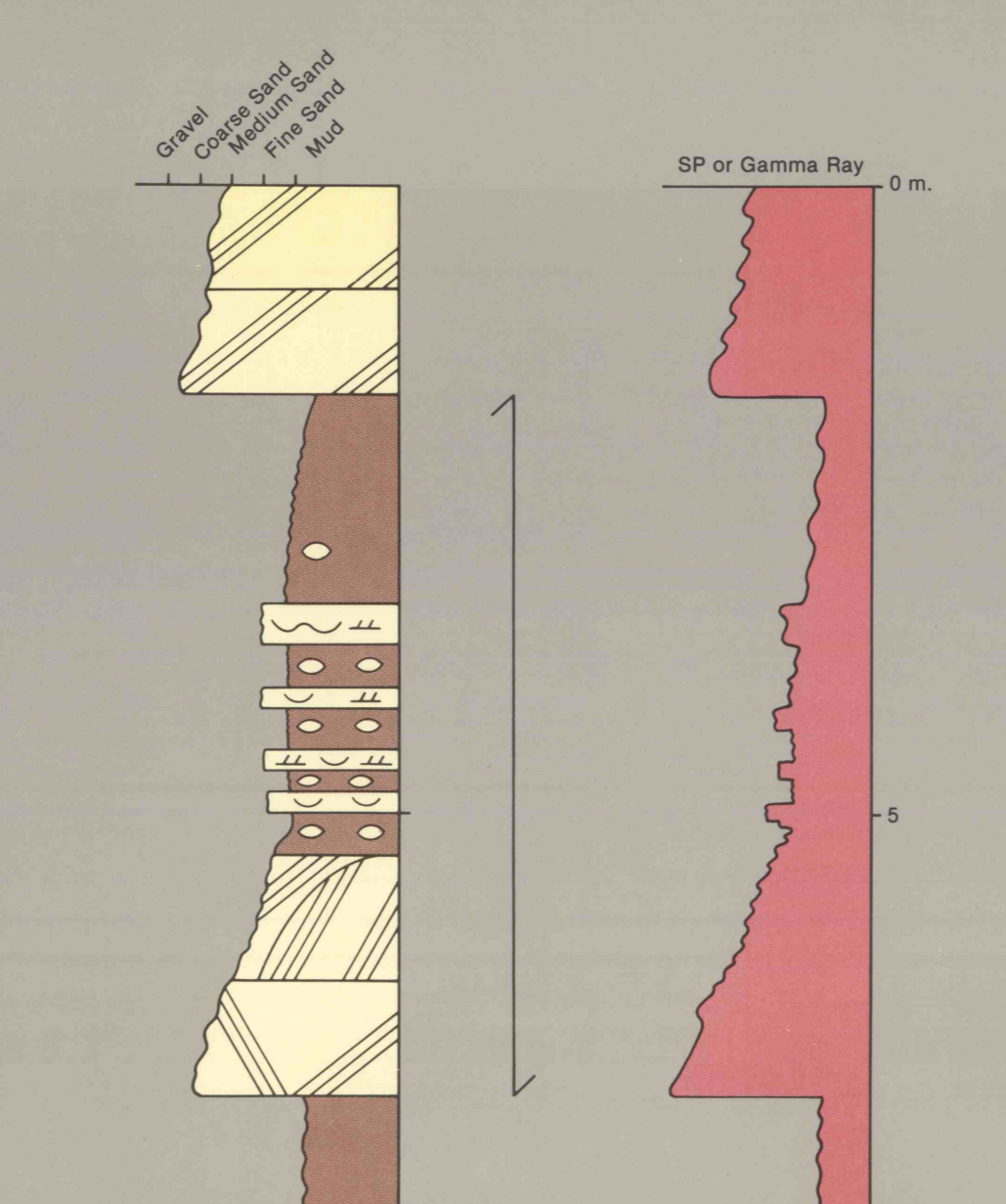
Eolian Dune

REFERENCES: Fryberger, S.C., 1979, *The Mountain Geol.*, 16, 1-36; Fryberger, S.C., Al-Sar, A.M., and Clisham, T.J., 1983, *Am. Assoc. Petroleum Geol. Bull.*, 67, 280-312; Lupe, R., and Ahlbrandt, T.S., 1979, *U.S. Geol. Survey Prof. Paper* 1052, 241-252; Vincelle, R.R. and Chittum, W.F., 1981, *Am. Assoc. Petroleum Geol. Bull.*, 65, 1546-1570.



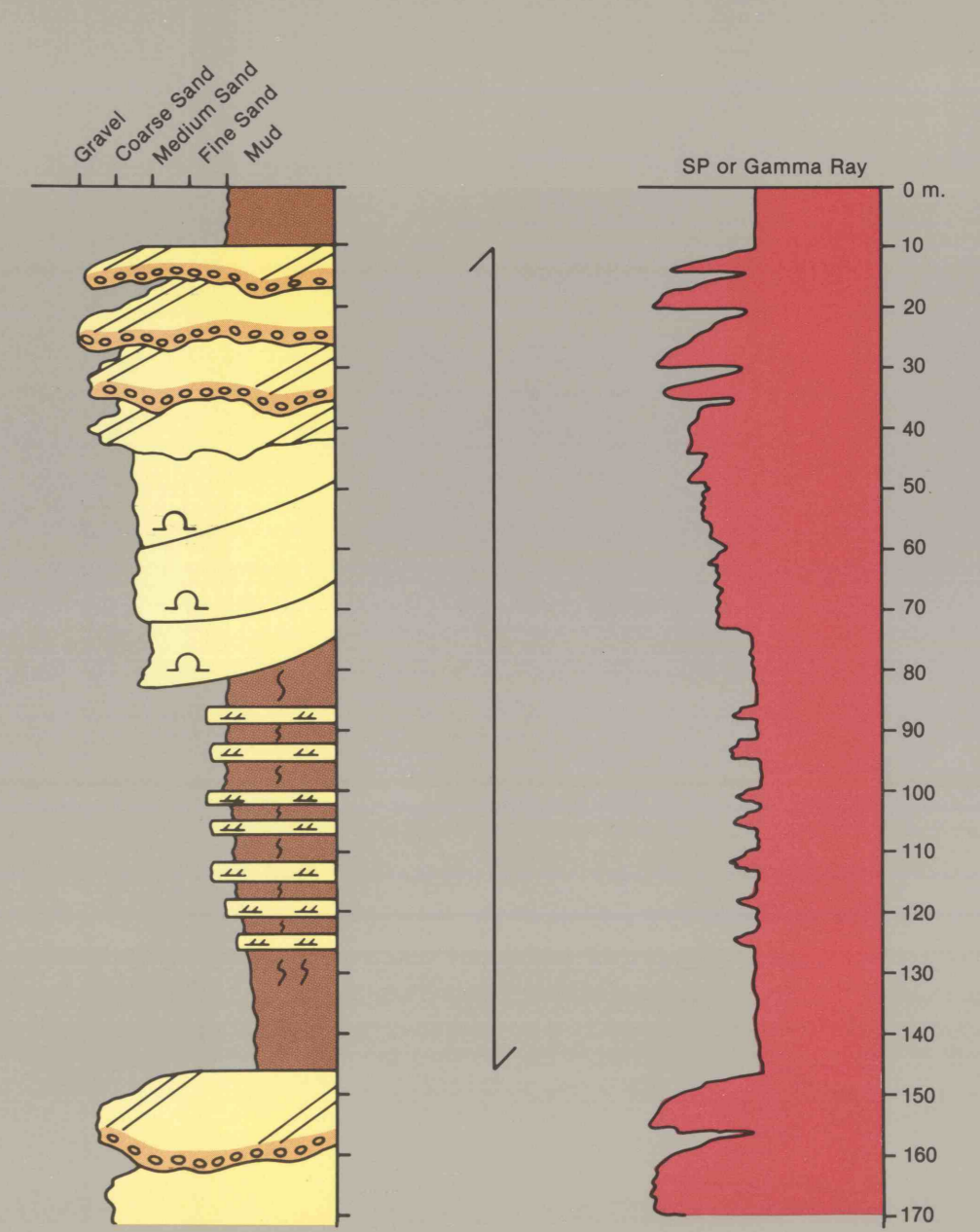
Barrier Island

REFERENCES: Bernard, H.A., LeBlanc, R.J., and Major, C.F. Jr., 1962, *Guidebook of Excursions*, 1962 Ann. Mtg. Geol. Soc. America, 174-226; Berg, R.R., and Davies, D.K., 1968, *Am. Assoc. Petroleum Geol. Bull.*, 52, 1888-1898.



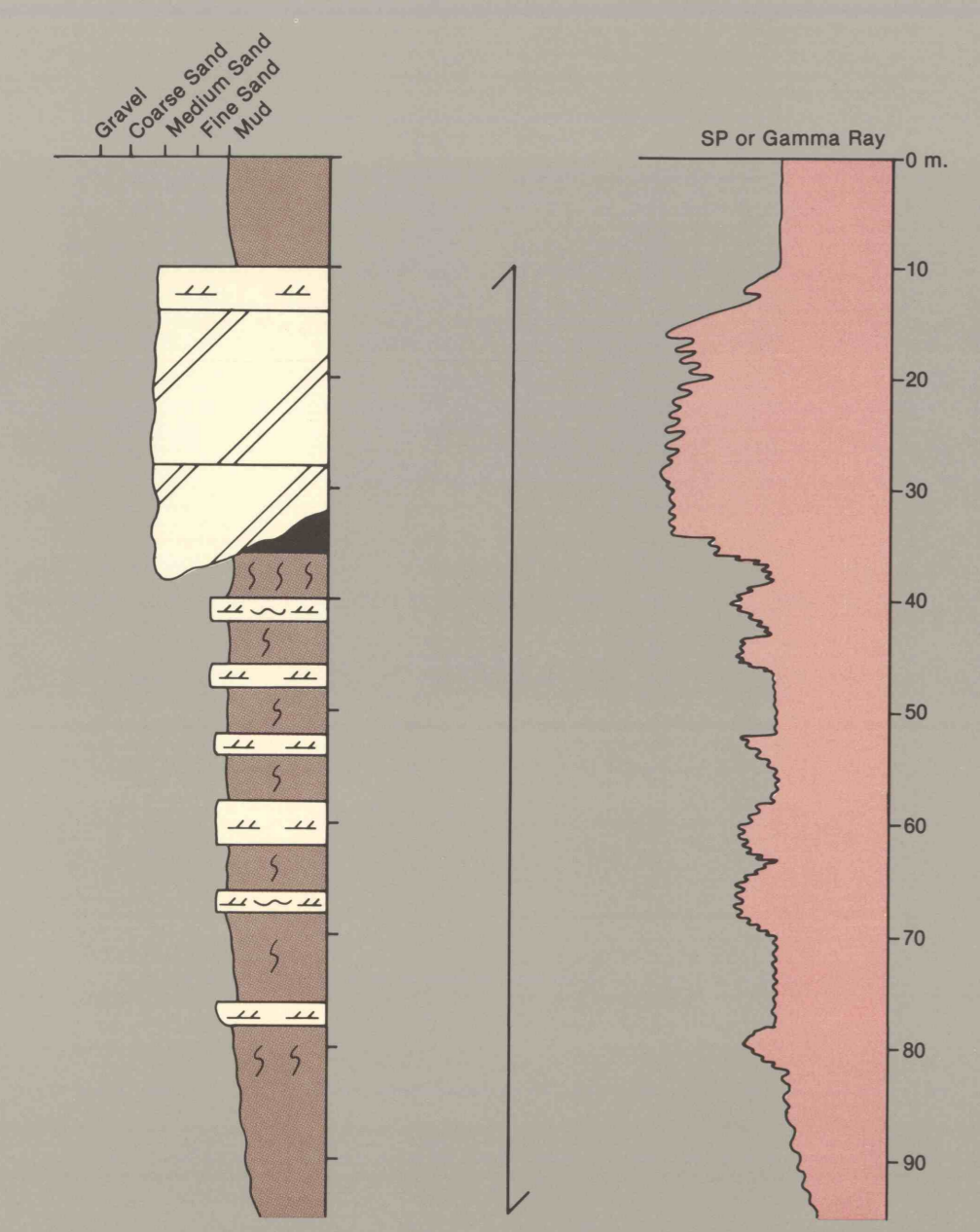
Intertidal Flat

REFERENCES: Klein, G. deV., 1971, *Geol. Soc. America Bull.*, 82, 2583-2592; Weber, K.J., 1971, *Geol. en. Mijnb.*, 50, 559-576.



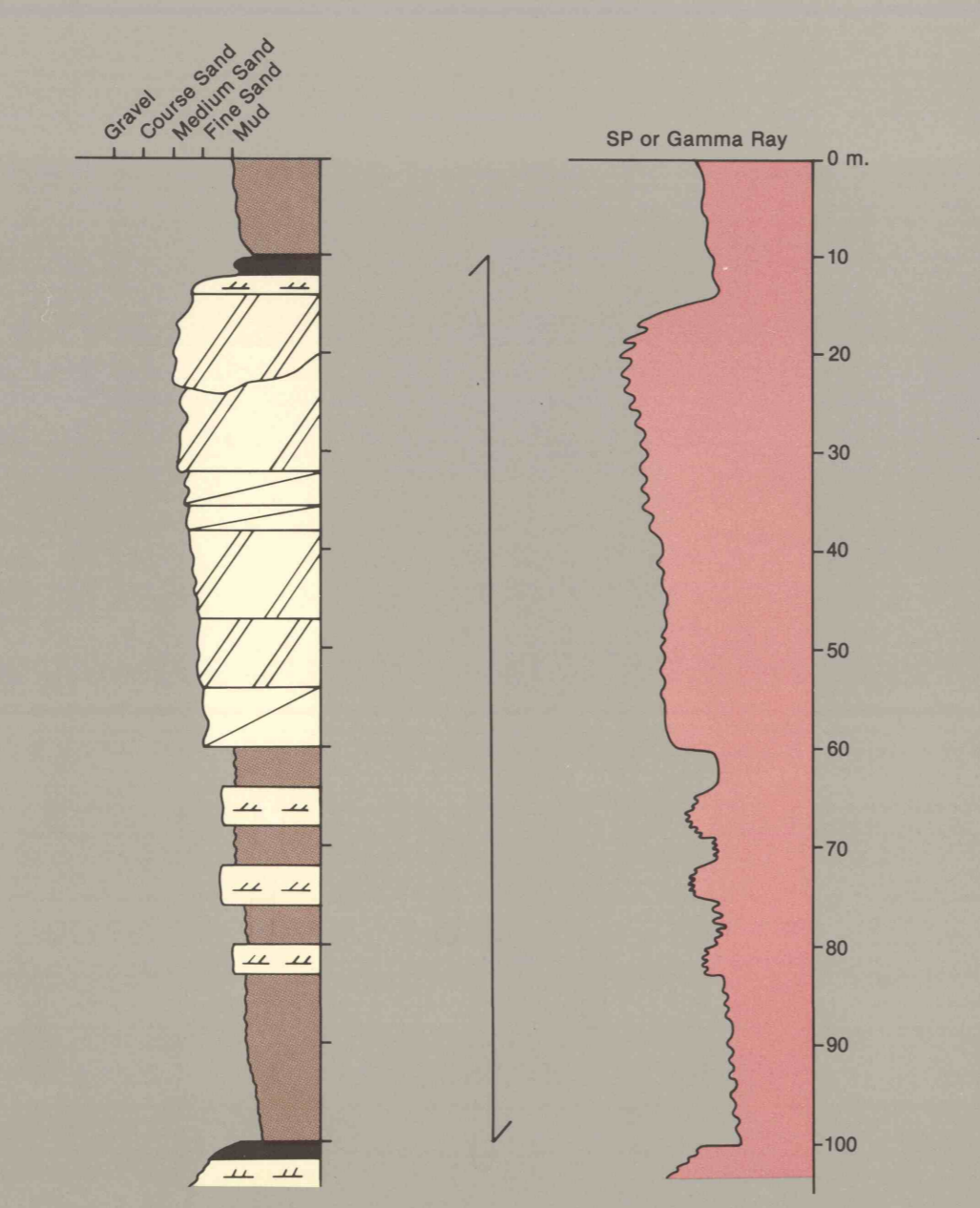
Fan Delta

REFERENCES: Boersma, G., 1984, *Geology*, 12, 27-30; Palomino-Cardenas, J.R., 1976, Unpub. PhD dissertation, Univ. of Illinois, 111p.



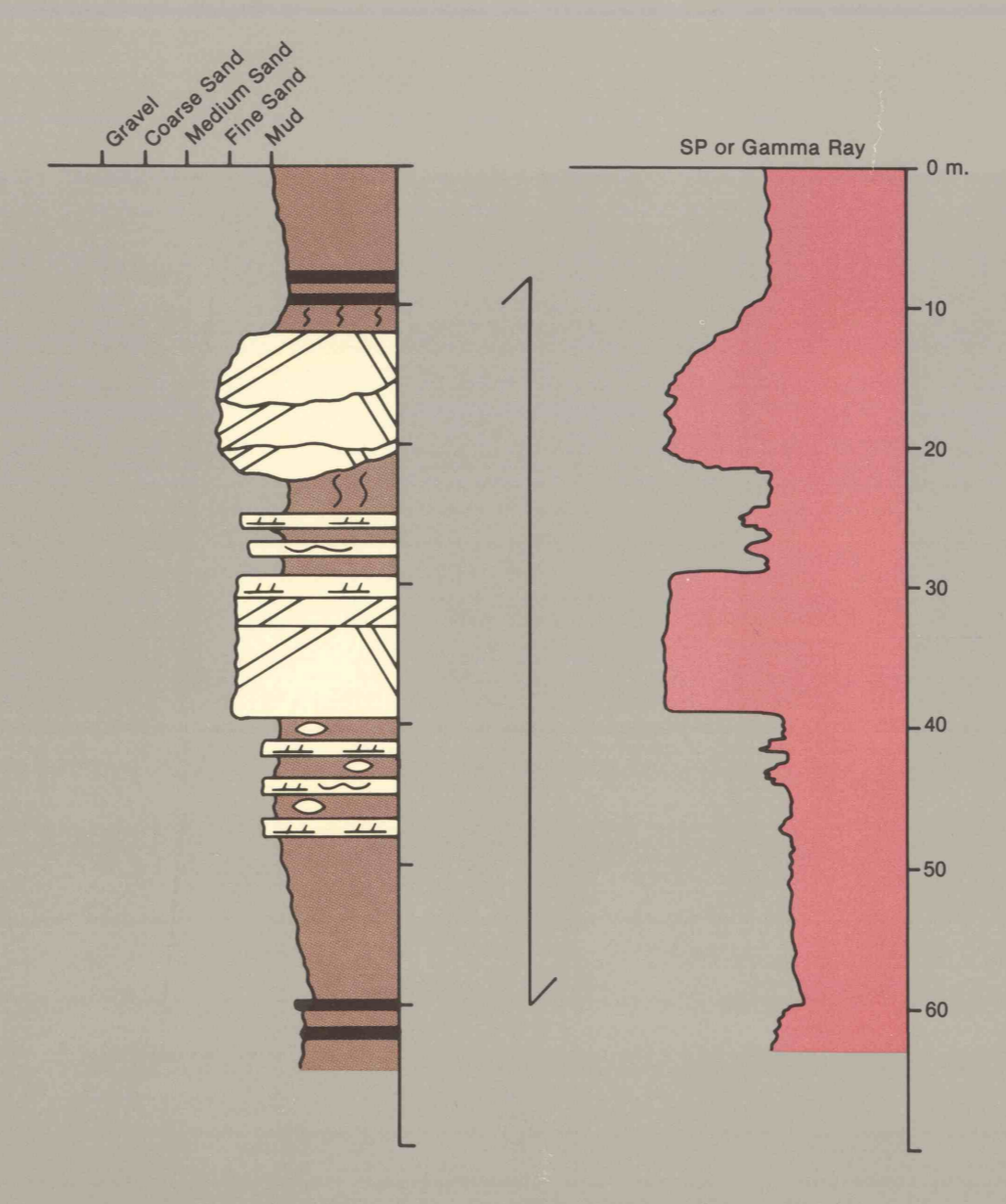
River-Dominated Delta

REFERENCES: Coleman, J.M., 1976, *Deltas*, Boston, IHRDC, 124p; Saxena, R.S., 1976, *Am. Assoc. Petroleum Geol. Short Course Syllabus*, New Orleans Mtg.



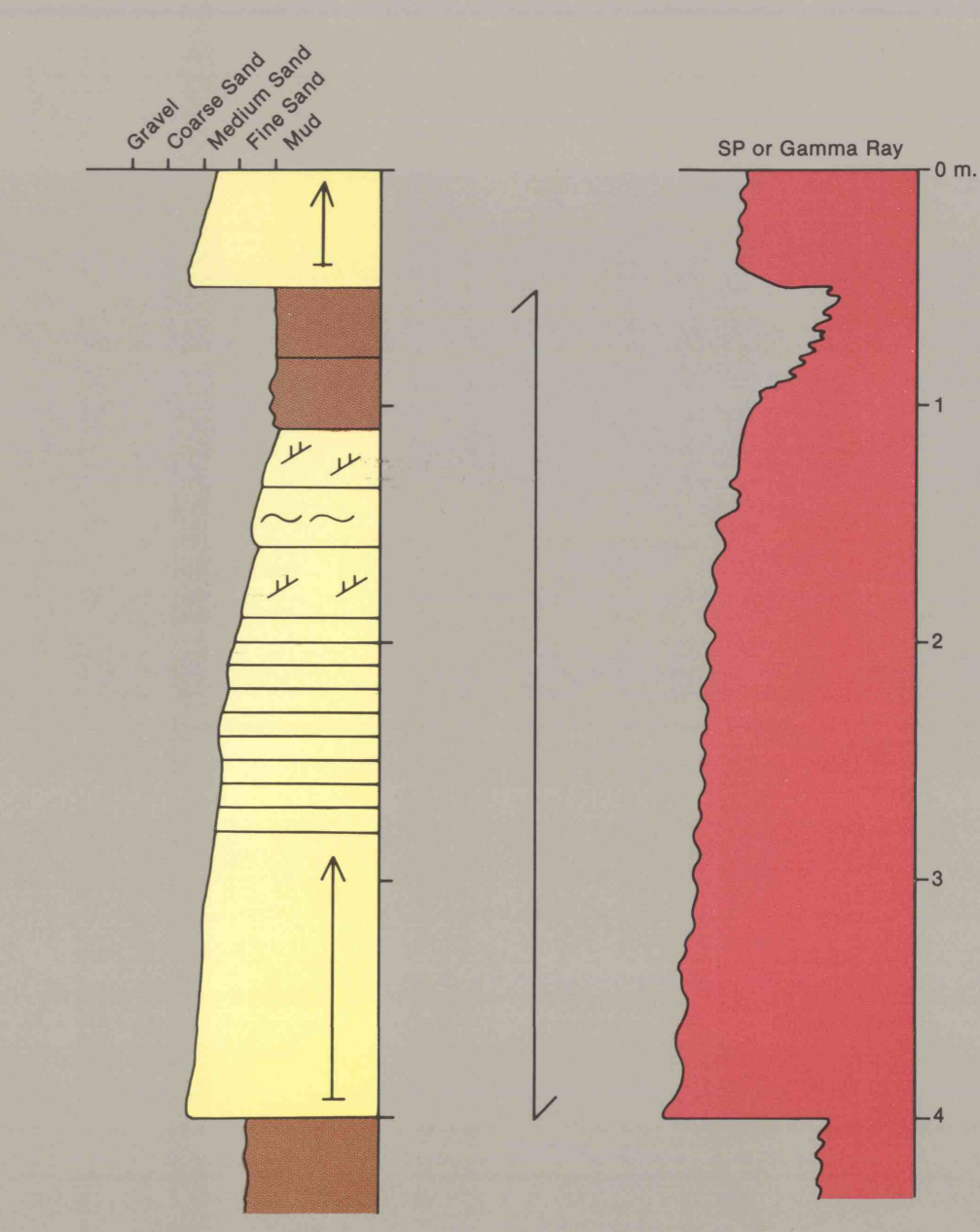
Wave-Dominated Delta

REFERENCE: Coleman, J.M., 1976, *Deltas*, Boston, IHRDC, 124p.



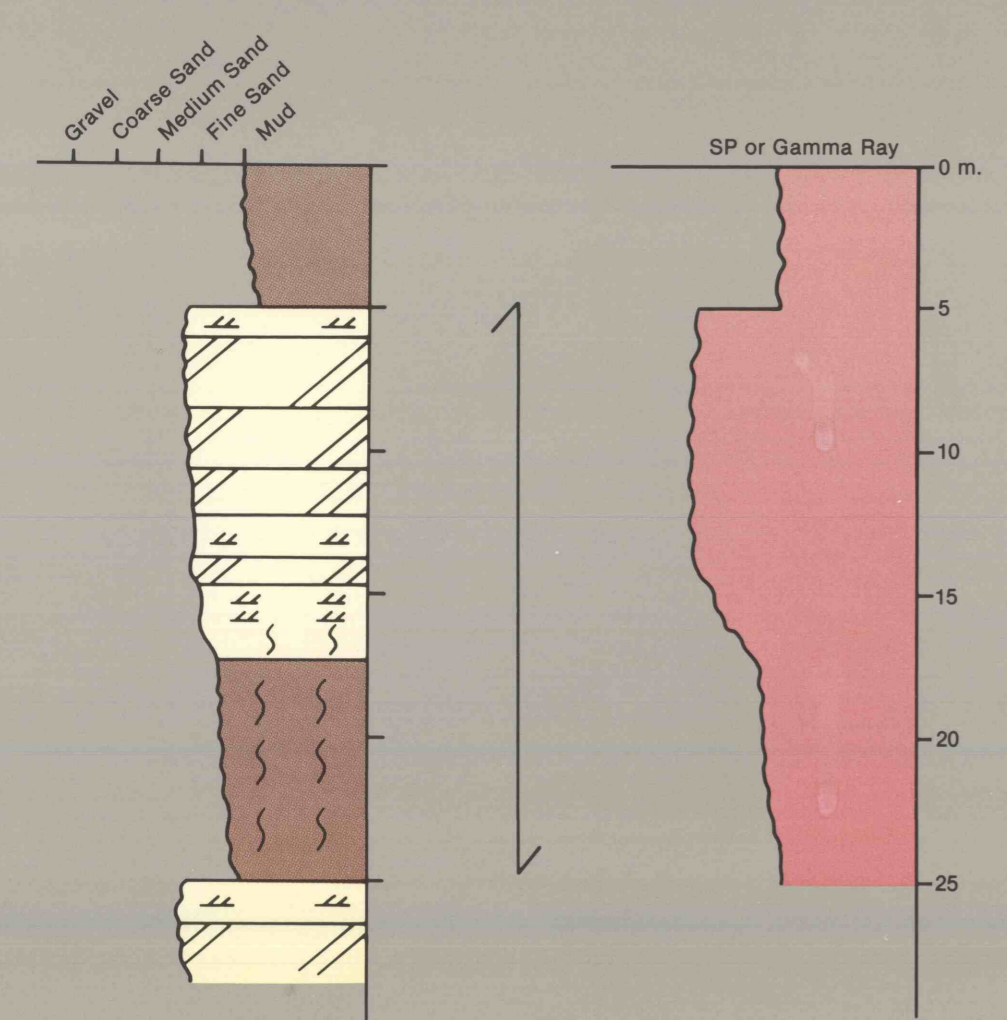
Tide-Dominated Delta

REFERENCES: Coleman, J.M., 1976, *Deltas*, Boston, IHRDC, 124p; Combar, A., and DeMatharel, M., 1978, *Am. Assoc. Petroleum Geol. Bull.*, 62, 1684-1695.



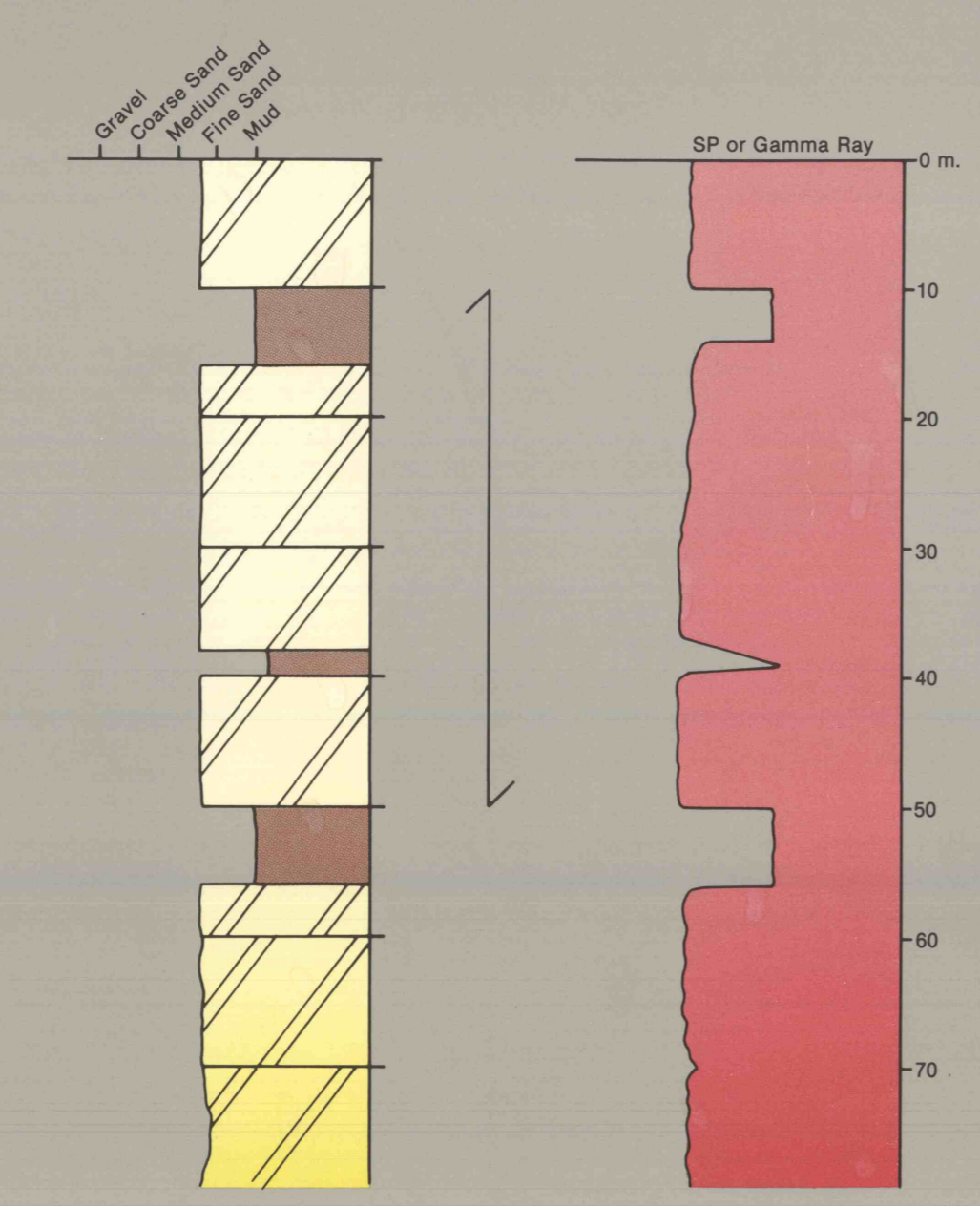
Bouma Sequence

REFERENCES: Bouma, A.H., 1962, *Sedimentology of some flysch deposits*, Amsterdam, Elsevier; Fagne, M.Y., 1976, *Am. Assoc. Petroleum Geol. Bull.*, 60, 515-527.



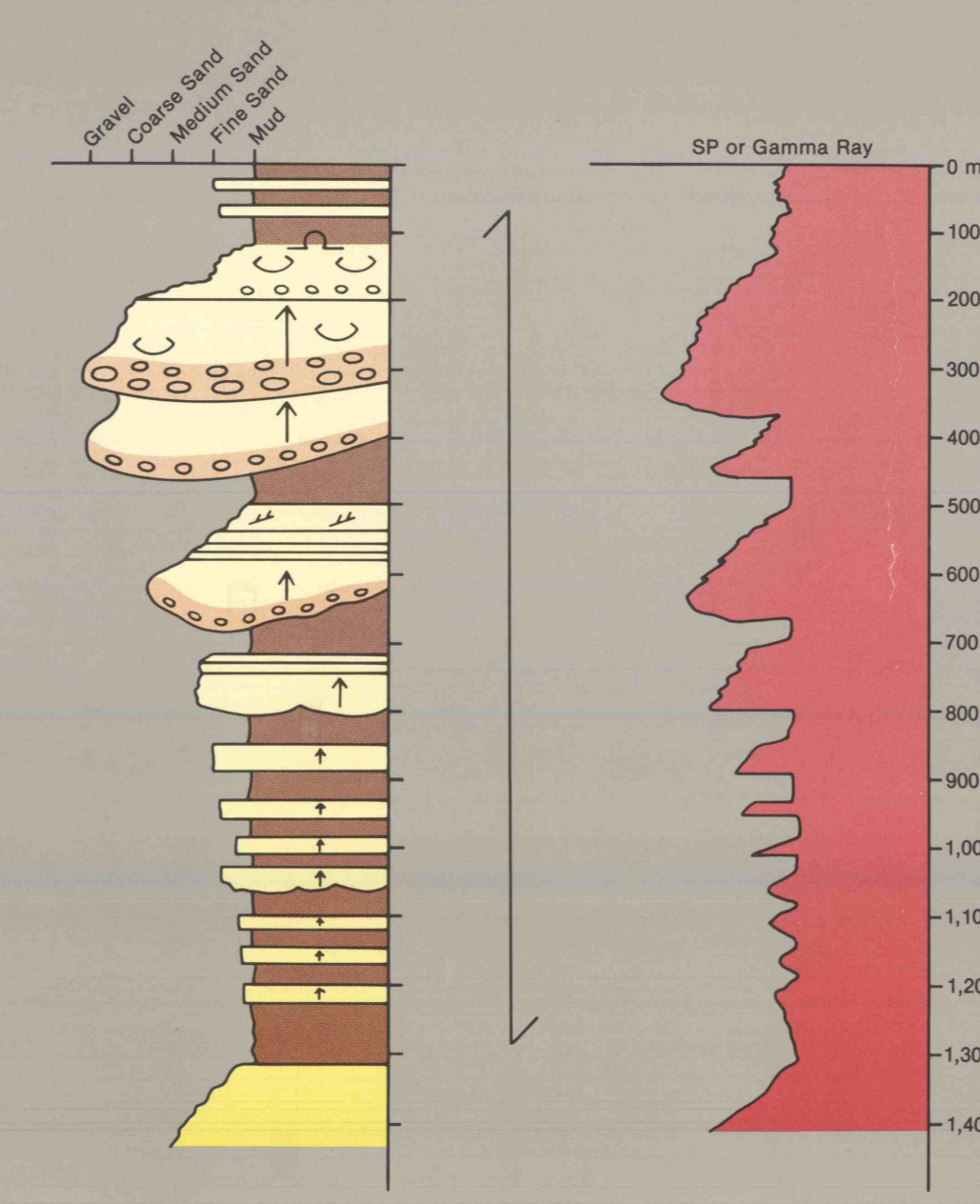
Wave-Dominated Shelf

REFERENCE: Bouma, A.H., Berryhill, H.L., Brenner, R.L., and Knebel, H.J., 1982, *Am. Assoc. Petroleum Geol. Mem.*, 31, 281-327.



Tide-Dominated Shelf

REFERENCES: Edoms, W.E., 1970, *Am. Assoc. Petroleum Geol. Bull.*, 54, 469-486; Johnson, H.D., 1977, *Sedimentology*, 24, 245-270; Klein, G. deV., 1977, *Clastic tidal facies*, Boston, IHRDC, 147p; Salley, R.C., 1976, *Am. Assoc. Petroleum Geol. Bull.*, 60, 184-195.



Ancient Submarine Fan

REFERENCES: Mutti, E., and Ricci-Luigi, F., 1972, *Mem. della Soc. Geol. Italiana*, 11, 161-199; Walker, R.G., 1978, *Am. Assoc. Petroleum Geol. Bull.*, 62, 932-966.

Explanation	
	Gravel/Conglomerate
	Sand/Sandstone
	Mud/Mudstone
	Coal
	Cross-stratification
	Herringbone Cross-stratification
	Low-Angle Accretionary Cross-stratification
	Reactivation Surface
	Current Ripples and Micro-cross-laminae
	Climbing Ripple
	Wavy Bedding
	Flaser Bedding
	Lenticular Bedding
	Graded Bedding
	Slump Structure
	Dish Structure
	Contorted Bedding or Convolute Laminiae
	Bioturbation