

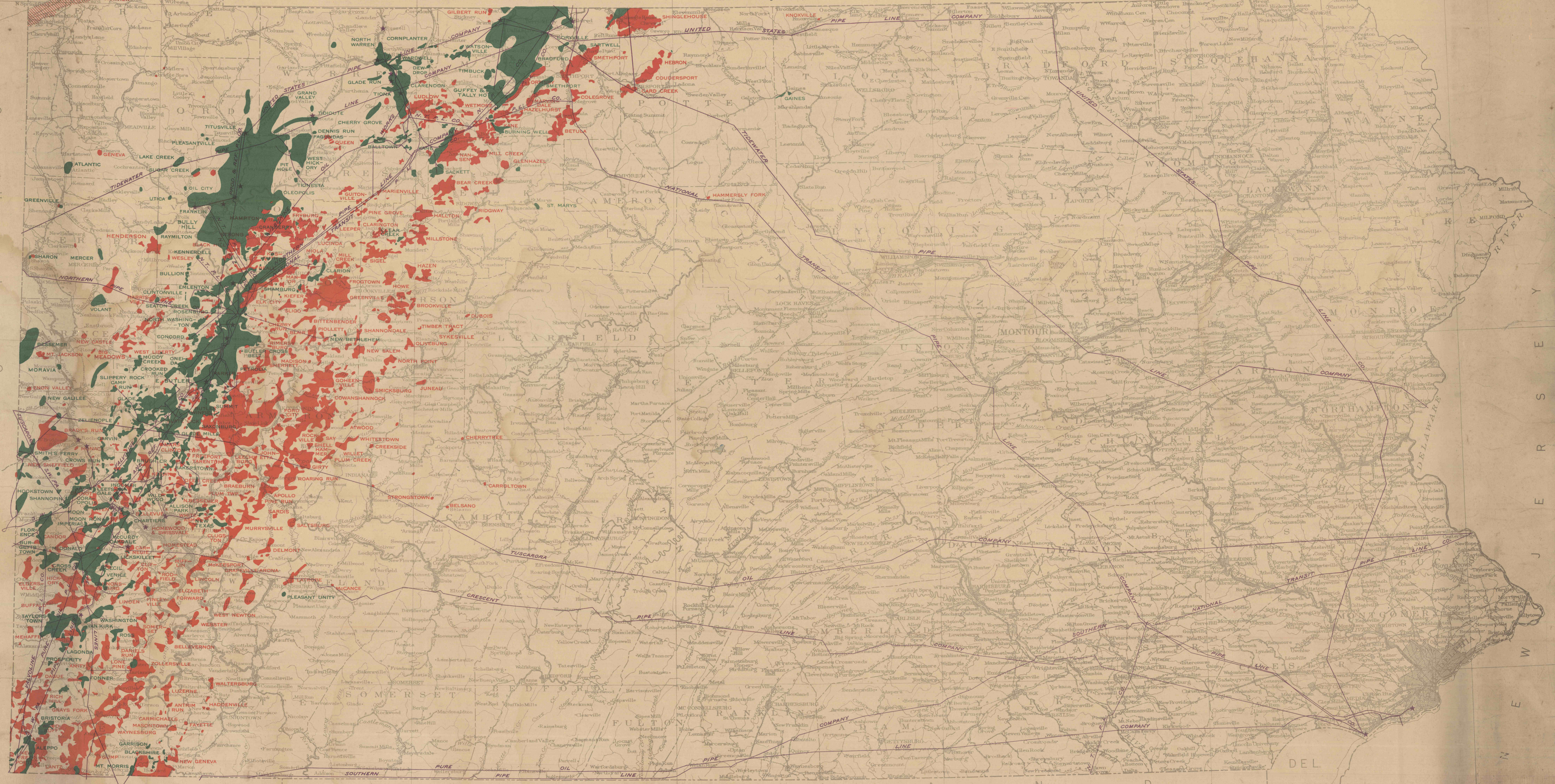
OIL AND GAS FIELDS OF PENNSYLVANIA

Compiled under the direction of G. B. RICHARDSON
1921

EXPLANATION OF OIL AND GAS SYMBOLS

- OIL FIELDS (SOME GAS)
- GAS FIELDS
- AREA IN WHICH SHALE GAS OCCURS
- OIL REFINERY (ONE OR MORE)
- MAIN OIL PIPE LINE

Data for some small oil and gas areas not available



WEST VIRGINIA MARYLAND

Scale 50000
0 10 20 30 40 50 Miles
0 10 20 30 40 50 Kilometers

State Capital
 Town or village
 Steam railroad
 Electric railroad
 YORK County Seat
 City or large town
 City or large town
 City or large town
 City or large town
 City or large town
 City or large town
 City or large town
 City or large town
 City or large town
 City or large town
 City or large town

OIL AND GAS COMPILED AND DRAFTING BY LEWIS B. PERRY
Preliminary Edition
Subject to revision