

EXPLANATION

— 20 —

Isopach of Oriskany sandstone. Contour interval 10 feet.

• 7/10+

Deep well. Upper number is well identification number assigned by Pennsylvania Geological Survey. Lower number represents thickness of Oriskany sandstone. "Plus" sign following thickness indicates that well bottoms in Oriskany, but total thickness of sandstone is unknown.

KOON DAM
x 155

Outcrop location showing thickness of Oriskany sandstone

—

Limit of Ridgeley format

⤴

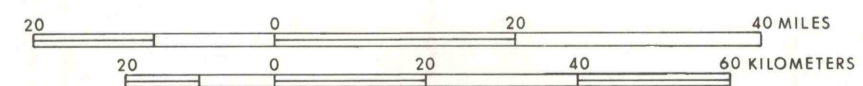
Area where Oriskany sandstone crops out

■

Area of no sand



SCALE: 1:1,000,000



Base map from Pennsylvania Geological Survey
Map 38, scale 1:1,000,000.

PLATE 2. ORISKANY SANDSTONE THICKNESS MAP