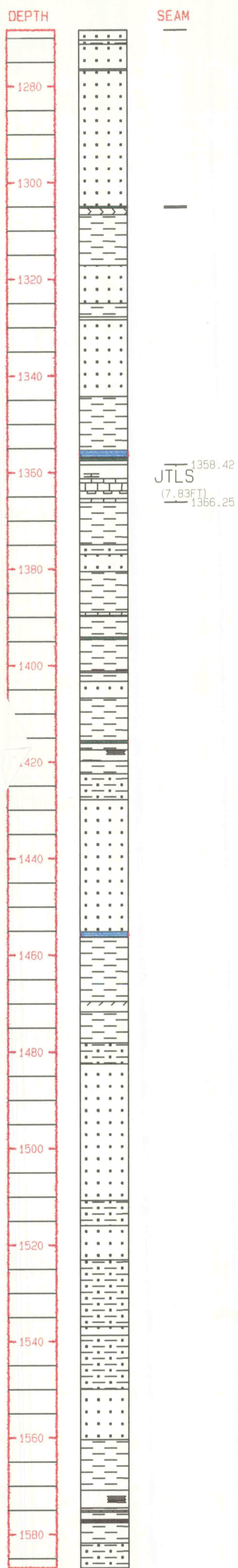


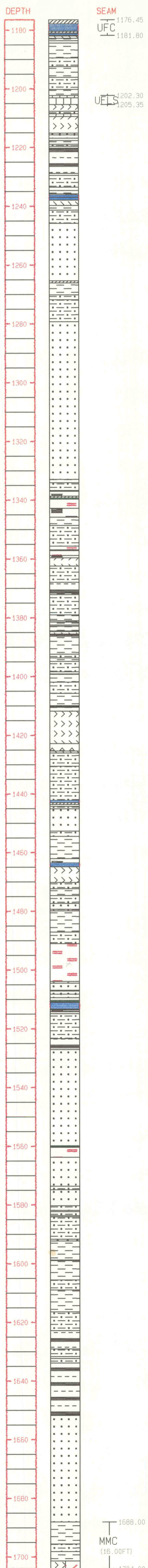
Revised Lith. Legend - July, 1998

CC - CALCAREOUS CLAYSTONE	IS - IRONSTONE	LH - CLAY SHALE
FC - FLINT CLAY	LS - LIMESTONE	SS - SANDSTONE
CG - CONGLOMERATE	BC - BONE (IMPURE) COAL	ST - SILTSTONE
IT - INT. SANDSTONE AND SILT SHALE	DH - DARK GRAY CLAY SHALE	TH - SILT SHALE
CO - COAL, undifferentiated	XX - CORE LOSS IN INTERVAL	IH - INT. SANDSTONE AND CLAY SHALE
PQ - Poor quality driller's log	OW - OLD WORKINGS	CH - CALCAREOUS CLAY SHALE
CT - CLAYSTONE	CS - CARBONACEOUS CLAY SHALE	RT - DRILLED BY ROTARY METHODS
RB - REDBED PALEOSOLS	MZ - MARINE FOSSIL ZONE	

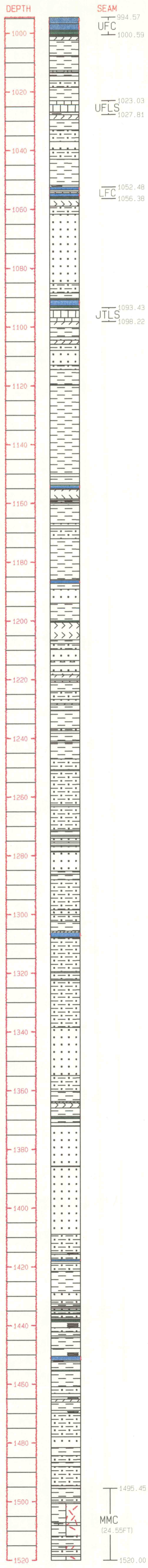
JLF044



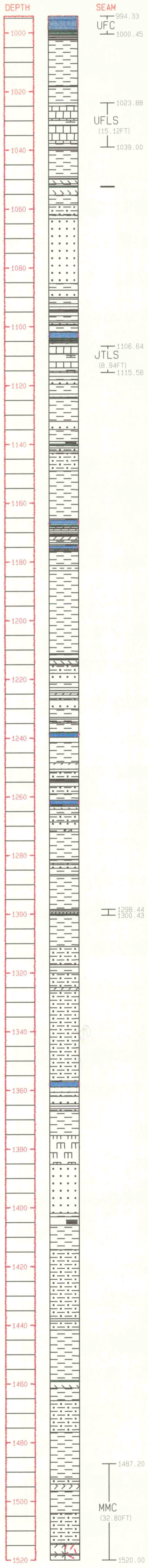
FR9801



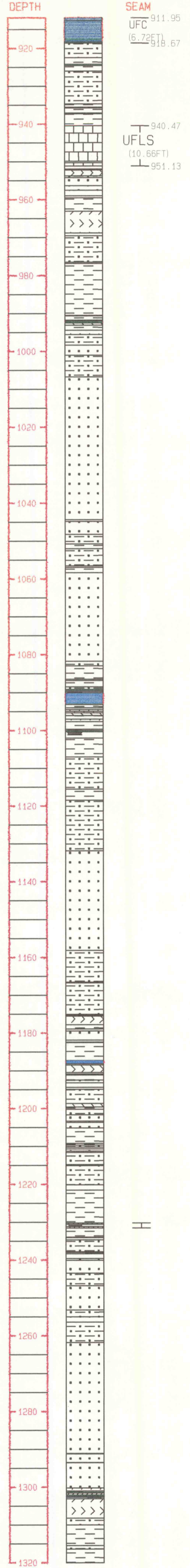
FR9706



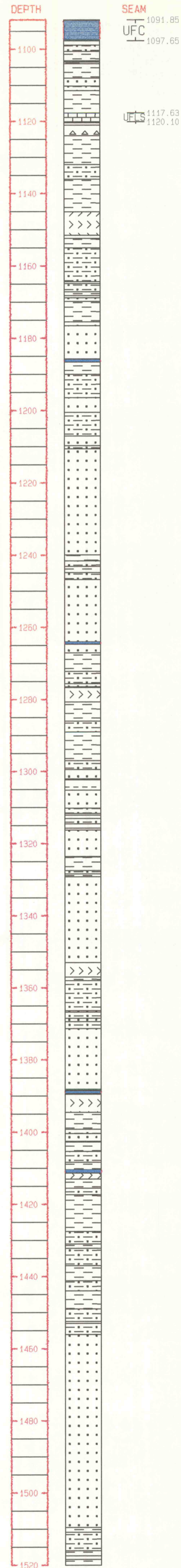
FR9710



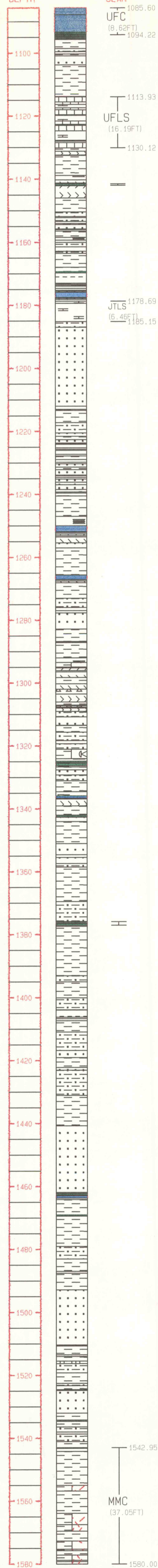
FR9622



FR9641



FR9723



FR9806

