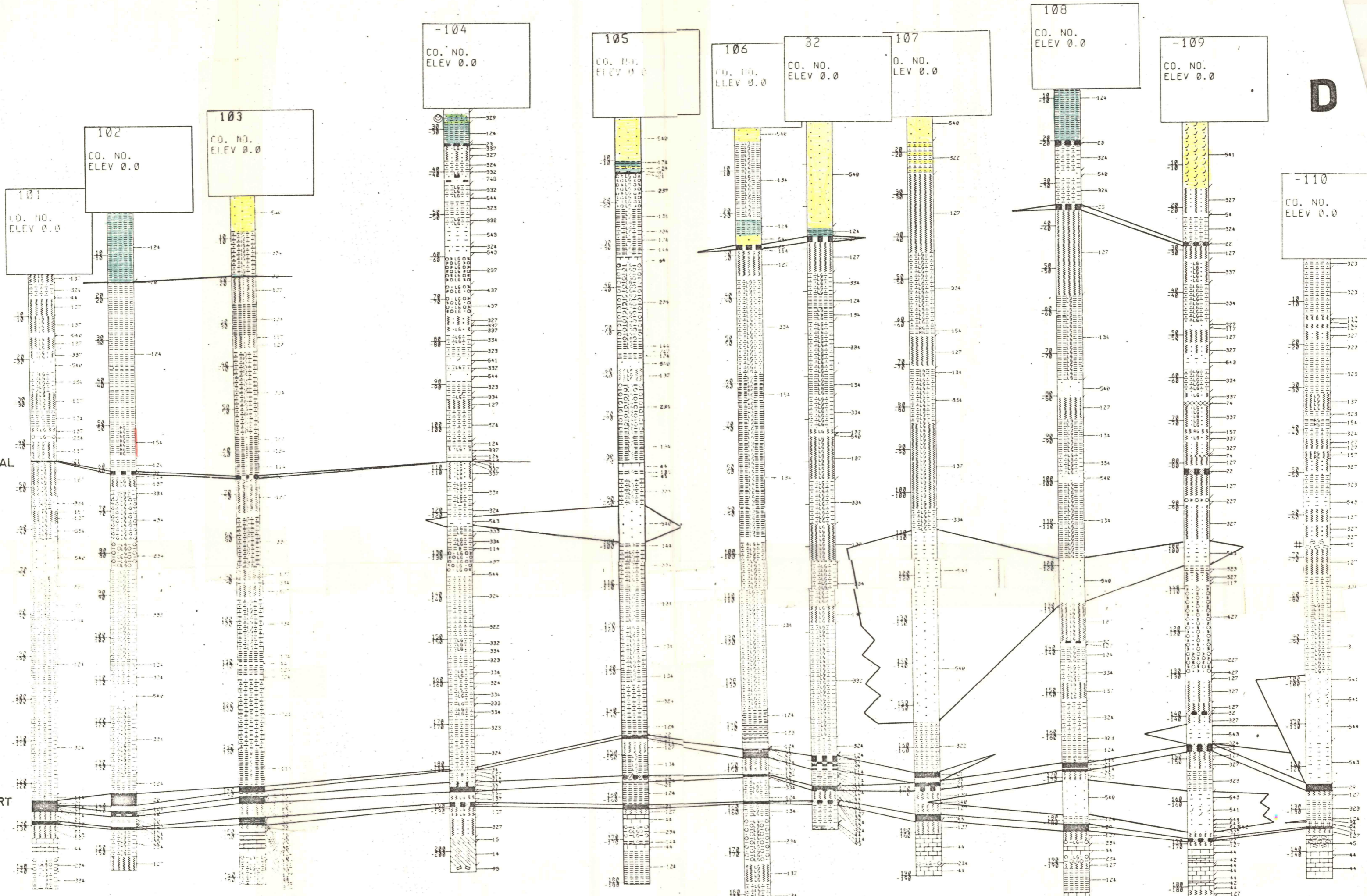


D

D



MAHONING COAL

UPPER FREEPORT COAL

EXPLANATION

- | | | | | | |
|--|--|--|---|--|---|
| | 101 FINE SANDSTONE W/ SHALE | | 234 LT. GRAY-GREEN SHALE W/ LIMESTONE NODULES | | 437 GRAY-GREEN SANDY FIRE CLAY W/ LIMESTONE NODULES |
| | 102 MED. SANDSTONE | | 237 LT. GRAY-GREEN FIRE CLAY W/ LIMESTONE NODULES | | 540 GRAY SANDSTONE |
| | 103 SANDSTONE NODULES | | 322 DK. GRAY INTERBEDDED SANDSTONE AND SHALE | | 541 CROSSBEDDED GRAY SANDSTONE |
| | 104 LAYERED W. BONE | | 323 DK. GRAY SHALE W/ SANDSTONE STREAKS | | 543 GRAY SANDSTONE W/ SHALE STREAKS |
| | 105 BONE STREAKED W. COAL | | 324 DK. GRAY MASSIVE SANDY SHALE | | 547 ROOTED GRAY SANDSTONE |
| | 106 BONE STREAKED W. COAL | | 327 DK. GRAY SANDY FIRE CLAY | | 640 CARBONATE CEMENTED GRAY SANDSTONE |
| | 107 BONE | | 332 GRAY-GREEN INTERBEDDED SANDSTONE AND SHALE | | 721 GRAY SHALE AND/OR IRONSTONE PEBBLE CONGLOMERATE |
| | 108 MASSIVE FINE GRAINED LIMESTONE | | 335 GRAY-GREEN SHALE W/ SANDSTONE STREAKS | | 742 GRAY SHALE PEBBLE CONGLOMERATE |
| | 109 FINE GRAINED SHALE LIMESTONE W/ LIMESTONE NOD. | | 334 LT. GRAY-GREEN SHALE | | 743 GRAY SHALE PEBBLE CONGLOMERATE |
| | 110 MASSIVE SANDSTONE | | 337 LT. GRAY-GREEN FIRE CLAY | | 744 QUARTZ PEBBLE CONGLOMERATE |
| | 111 FLINT CLAY | | 338 RED AND GREEN SHALE | | 749 GRAY SANDSTONE W/ COAL BANDS |
| | 112 RED AND GREEN SHALE | | 339 RED AND GREEN CLAYSTONE | | 744 GRAY SANDSTONE W/ COAL SPARS |
| | 113 RED SHALE | | 344 RED SHALE | | 747 FOSSIL SHELLS |
| | 114 FLINT CLAY | | 344 RED SHALE | | |
| | 115 RED SHALE | | 344 RED SHALE | | |
| | 116 RED SHALE | | 344 RED SHALE | | |
| | 117 RED SHALE | | 344 RED SHALE | | |
| | 118 RED SHALE | | 344 RED SHALE | | |
| | 119 RED SHALE | | 344 RED SHALE | | |
| | 120 RED SHALE | | 344 RED SHALE | | |
| | 121 RED SHALE | | 344 RED SHALE | | |
| | 122 RED SHALE | | 344 RED SHALE | | |
| | 123 RED SHALE | | 344 RED SHALE | | |
| | 124 RED SHALE | | 344 RED SHALE | | |
| | 125 RED SHALE | | 344 RED SHALE | | |
| | 126 RED SHALE | | 344 RED SHALE | | |
| | 127 RED SHALE | | 344 RED SHALE | | |
| | 128 RED SHALE | | 344 RED SHALE | | |
| | 129 RED SHALE | | 344 RED SHALE | | |
| | 130 RED SHALE | | 344 RED SHALE | | |
| | 131 RED SHALE | | 344 RED SHALE | | |
| | 132 RED SHALE | | 344 RED SHALE | | |
| | 133 RED SHALE | | 344 RED SHALE | | |
| | 134 RED SHALE | | 344 RED SHALE | | |
| | 135 RED SHALE | | 344 RED SHALE | | |
| | 136 RED SHALE | | 344 RED SHALE | | |
| | 137 RED SHALE | | 344 RED SHALE | | |
| | 138 RED SHALE | | 344 RED SHALE | | |
| | 139 RED SHALE | | 344 RED SHALE | | |
| | 140 RED SHALE | | 344 RED SHALE | | |
| | 141 RED SHALE | | 344 RED SHALE | | |
| | 142 RED SHALE | | 344 RED SHALE | | |
| | 143 RED SHALE | | 344 RED SHALE | | |
| | 144 RED SHALE | | 344 RED SHALE | | |
| | 145 RED SHALE | | 344 RED SHALE | | |
| | 146 RED SHALE | | 344 RED SHALE | | |
| | 147 RED SHALE | | 344 RED SHALE | | |
| | 148 RED SHALE | | 344 RED SHALE | | |
| | 149 RED SHALE | | 344 RED SHALE | | |
| | 150 RED SHALE | | 344 RED SHALE | | |

PLATE 5
CROSS SECTION D-D'

