

G

G'

83
CO. NO.
ELEV 0.0

84
CO. NO.
ELEV 0.0

C-85
CO. NO.
ELEV 0.0

87
CO. NO.
ELEV 0.0

88
CO. NO.
ELEV 0.0

89
CO. NO.
ELEV 0.0

86
CO. NO.
ELEV 0.0

BRUSH CREEK
MARINE ZONE

MAHONING COAL

UPPER FREEPORT
COAL

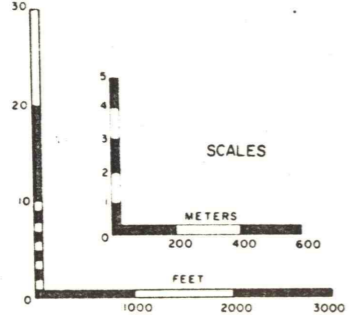
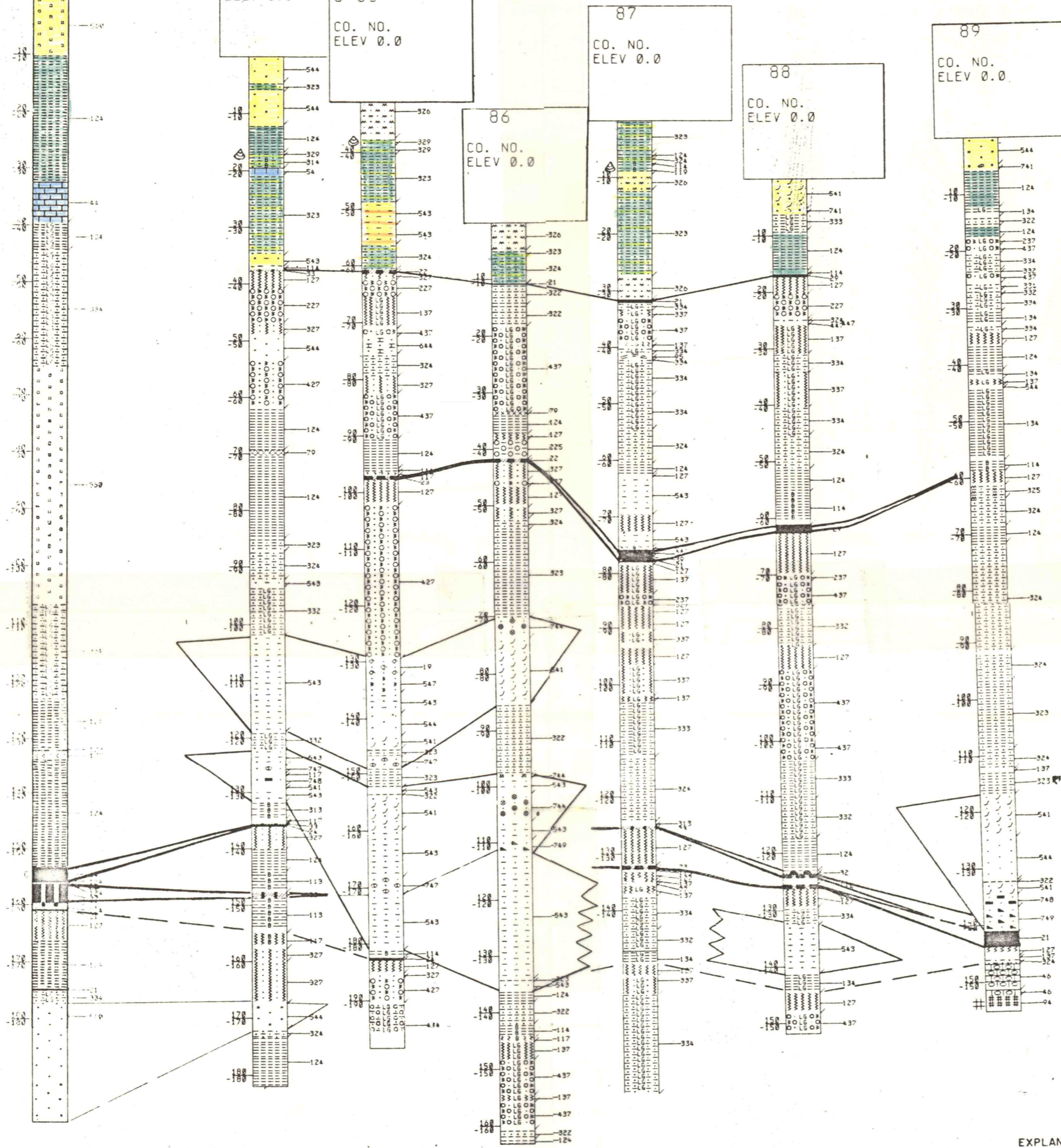


PLATE 8

CROSS SECTION G-G'

EXPLANATION

- | | | | |
|---|---|---|---|
| 2 OPEN SPACE OR CREVICE | 96 MODULAR FLINT CLAY | 234 LT GRAY GREEN SHALE W/LIMESTONE NODULES | 437 GRAY GREEN SANDY FIRE CLAY W/LIMESTONE NODULES |
| 14 SLUMPED SANDY SHALE | 113 BLACK SHALE W/COAL STREAKS | 237 LT GRAY GREEN FIRE CLAY W/LIMESTONE NODULES | 540 GRAY SANDSTONE |
| 15 SLUMPED SANDSTONE | 114 BLACK SHALE | 322 DK GRAY INTERBEDDED SANDSTONE AND SHALE | 541 CROSSBEDDED GRAY SANDSTONE |
| 19 SANDSTONE MUDFLOW | 117 BLACK FIRE CLAY | 323 DK GRAY SHALE W/SANDSTONE STREAKS | 543 GRAY SANDSTONE W/SHALE STREAKS |
| 20 COAL | 123 DK GRAY SHALE W/COAL STREAKS | 324 DK GRAY MASSIVE SANDY SHALE | 547 ROOTED GRAY SANDSTONE |
| 22 COAL LAYERED W/BONE | 124 DK GRAY SHALE | 327 DK GRAY SANDY FIRE CLAY | 640 CARBONATE CEMENTED GRAY SANDSTONE |
| 30 IMPURE COAL | 127 DK GRAY FIRE CLAY | 332 LT GRAY GREEN INTERBEDDED SANDSTONE AND SHALE | 741 GRAY SHALE AND/OR IRONSTONE PEBBLE CONGLOMERATE |
| 33 BONE STREAKED W/COAL | 134 LT GRAY GREEN SHALE | 333 LT GRAY GREEN SHALE W/SANDSTONE STREAKS | 742 GRAY SHALE PEBBLE CONGLOMERATE |
| 34 BONE | 137 LT GRAY GREEN FIRE CLAY | 334 LT GRAY GREEN MASSIVE SANDY SHALE | 744 GRAY QUARTZ PEBBLE CONGLOMERATE |
| 44 MASSIVE FINE GRAINED LIMESTONE | 154 RED AND GREEN SHALE | 335 LT GRAY GREEN CHURNED SANDY SHALE | 748 GRAY SANDSTONE W/COAL BANDS |
| 66 FINE GRAINED SHALEY LIMESTONE W/LIMESTONE NODS | 157 RED AND GREEN CLAYSTONE | 337 LT GRAY GREEN SANDY FIRE CLAY | 749 GRAY SANDSTONE W/COAL SPARS |
| 74 MASSIVE IRONSTONE | 164 RED SHALE | 427 DK GRAY SANDY FIRE CLAY W/LIMESTONE NODULES | FOSSIL SHELLS |
| 90 FLINT CLAY | 224 DK GRAY SHALE W/LIMESTONE NODULES | 434 LT GRAY GREEN SANDY SANDY SHALE W/LIMESTONE NODULES | |
| 95 BRECCIATED FLINT CLAY | 227 DK GRAY FIRE CLAY W/LIMESTONE NODULES | | |