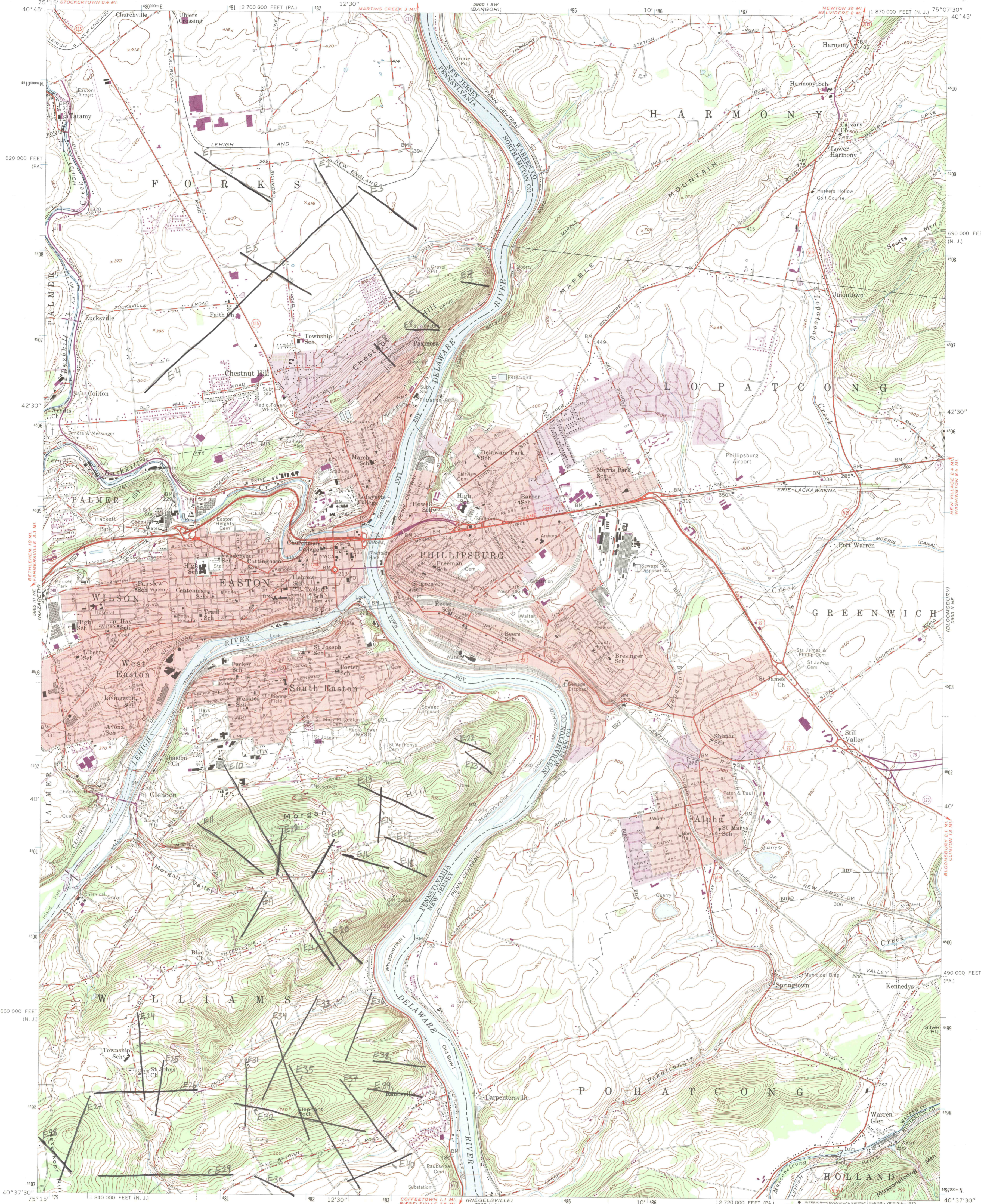


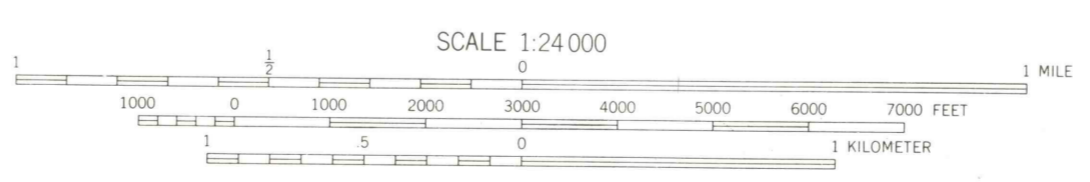
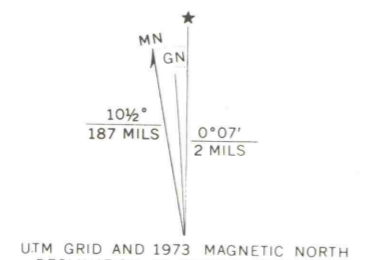
EPA/EPIC  
Fracture Trace Study

EASTON QUADRANGLE  
NEW JERSEY-PENNSYLVANIA  
7.5 MINUTE SERIES (TOPOGRAPHIC)

UNITED STATES  
DEPARTMENT OF THE INTERIOR  
GEOLOGICAL SURVEY



Mapped by the Army Map Service  
Edited and published by the Geological Survey  
Control by USGS, USC&GS, USCE, and New Jersey Geodetic Survey  
Topography from aerial photographs by photogrammetric methods  
Field check 1943. Culture revised by the Geological Survey 1956  
Polyconic projection. 1927 North American datum  
10,000-foot grids based on New Jersey coordinate system  
and Pennsylvania coordinate system, south zone  
1000-meter Universal Transverse Mercator grid ticks,  
zone 18, shown in blue  
Red tint indicates areas in which only landmark buildings are shown  
Revisions shown in purple compiled by the Geological Survey  
in cooperation with State of Pennsylvania agencies from aerial  
photographs taken 1968 and taken 1973. This information not  
field checked  
Purple tint indicates extension of urban areas



CONTOUR INTERVAL 20 FEET  
NATIONAL GEODETIC VERTICAL DATUM OF 1929

THIS MAP COMPLIES WITH NATIONAL MAP ACCURACY STANDARDS  
FOR SALE BY U.S. GEOLOGICAL SURVEY, RESTON, VIRGINIA 22092  
A FOLDER DESCRIBING TOPOGRAPHIC MAPS AND SYMBOLS IS AVAILABLE ON REQUEST

ROAD CLASSIFICATION

Heavy-duty	Light-duty
Medium-duty	Unimproved dirt
Interstate Route	U.S. Route
	State Route



EASTON, N. J.-PA.  
N4037.5-W7507.5/7.5

1956  
PHOTOREVISED 1968 AND 1973  
AMS 5965 II NW-SERIES V822