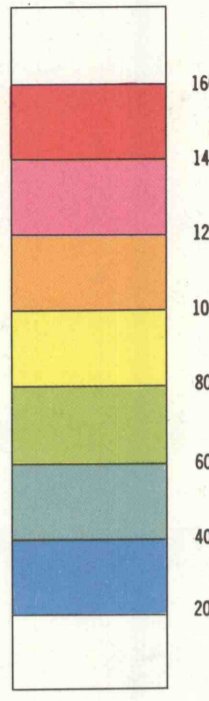


Aeromagnetic map of eastern Pennsylvania and northern New Jersey showing generalized geologic relations of the crystalline rocks.

GEORGE W. FISHER, MICHAEL W. HIGGINS AND ISIDORE ZIETZ.

EXPLANATION

Magnetic intensity in gammas



- J₁ Newark Group (Jurassic and Triassic) and related igneous intrusions
- Unconformity**
- D Devonian sedimentary rocks
- S Silurian sedimentary rocks
- O_C Ordovician and Cambrian sedimentary rocks
- Unconformity**
- pC Precambrian rocks (includes minor inliers of O_C in southwestern part of Reading Prong)
- Structure symbols**
- Contact, dotted where concealed
- High-angle fault

REFERENCES CITED

Bromery, R. W., 1967, Aeromagnetic map of Baltimore County and Baltimore City, Maryland: U. S. Geol. Survey Geophys. Inv. Map GP-613, scale 1:62,500.

Bromery, R. W., Petty, A. J., and Smith, C. W., 1964, Aeromagnetic map of Bel Air and vicinity, Harford, Baltimore, and Cecil Counties, Maryland: U. S. Geol. Survey Geophys. Inv. Map GP-482, scale 1:62,500.

Bromery, R. W., and Griscom, Andrew, 1967, Aeromagnetic and generalized geologic map of southeastern Pennsylvania: U. S. Geol. Survey Geophys. Inv. Map GP-577, scale 1:125,000.

Fabiano, E. B., and Peddie, N. W., 1969, Grid values of total magnetic intensity, IGRF, 1965: ESSA, Coast and Geodetic Survey Tech. Rept. 38, 55 p.

Henderson, J. R., Andreasen, G. E., and Petty, A. J., 1966, Aeromagnetic map of northern New Jersey and adjacent parts of New York and Pennsylvania: U. S. Geol. Survey Geophys. Inv. Map GP-562, scale 1:125,000.

Henderson, J. R., Johnson, R. W., and Gilbert, F. P., 1963, Aeromagnetic map of the Wilmington, Delaware, area and adjacent parts of Pennsylvania and Maryland: U. S. Geol. Survey Geophys. Inv. Map GP-363, scale 1:62,500.

U. S. Geological Survey, 1971a, Aeromagnetic map of part of Kent County, Maryland, and parts of adjacent counties in Maryland and Delaware: U. S. Geol. Survey Geophys. Inv. Map GP-756, scale 1:62,500.

U. S. Geological Survey, 1971b, Aeromagnetic map of part of Cecil County, Maryland, and parts of adjacent counties in Maryland and Delaware: U. S. Geol. Survey Geophys. Inv. Map GP-755, scale 1:62,500.

U. S. Geological Survey, 1973, Aeromagnetic map of northern Frederick County, Maryland, and parts of adjacent counties in Maryland and Pennsylvania: U. S. Geol. Survey open-file map, scale 1:62,500.

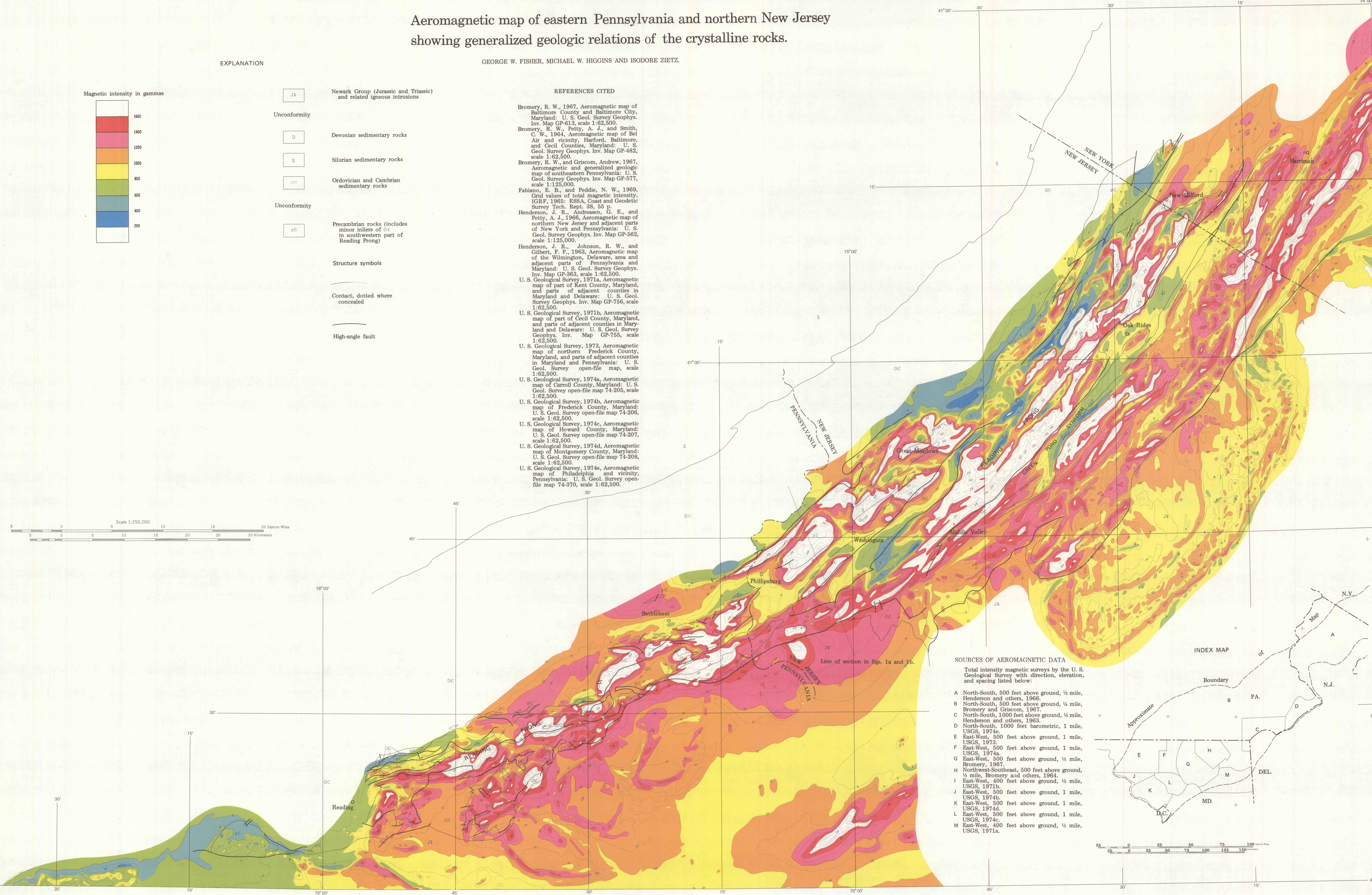
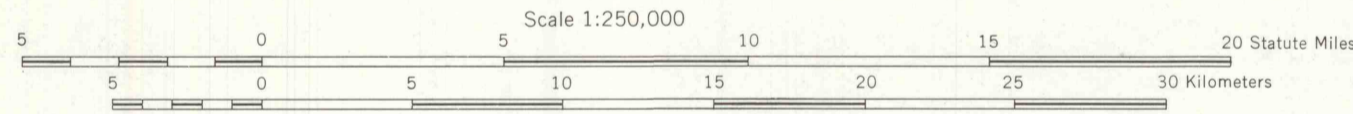
U. S. Geological Survey, 1974a, Aeromagnetic map of Carroll County, Maryland: U. S. Geol. Survey open-file map 74-205, scale 1:62,500.

U. S. Geological Survey, 1974b, Aeromagnetic map of Frederick County, Maryland: U. S. Geol. Survey open-file map 74-206, scale 1:62,500.

U. S. Geological Survey, 1974c, Aeromagnetic map of Howard County, Maryland: U. S. Geol. Survey open-file map 74-207, scale 1:62,500.

U. S. Geological Survey, 1974d, Aeromagnetic map of Montgomery County, Maryland: U. S. Geol. Survey open-file map 74-208, scale 1:62,500.

U. S. Geological Survey, 1974e, Aeromagnetic map of Philadelphia and vicinity, Pennsylvania: U. S. Geol. Survey open-file map 74-370, scale 1:62,500.



SOURCES OF AEROMAGNETIC DATA

- Total intensity magnetic surveys by the U. S. Geological Survey with direction, elevation, and spacing listed below:
- A North-South, 500 feet above ground, 1/4 mile, Henderson and others, 1966.
 - B North-South, 500 feet above ground, 1/4 mile, Bromery and Griscom, 1967.
 - C North-South, 1000 feet above ground, 1/4 mile, Henderson and others, 1963.
 - D North-South, 1000 feet barometric, 1 mile, USGS, 1974e.
 - E East-West, 500 feet above ground, 1 mile, USGS, 1973.
 - F East-West, 500 feet above ground, 1 mile, USGS, 1974a.
 - G East-West, 500 feet above ground, 1/2 mile, Bromery, 1967.
 - H Northwest-Southeast, 500 feet above ground, 1/2 mile, Bromery and others, 1964.
 - I East-West, 400 feet above ground, 1/2 mile, USGS, 1971b.
 - J East-West, 500 feet above ground, 1 mile, USGS, 1974b.
 - K East-West, 500 feet above ground, 1 mile, USGS, 1974d.
 - L East-West, 500 feet above ground, 1 mile, USGS, 1974c.
 - M East-West, 400 feet above ground, 1/2 mile, USGS, 1971a.

INDEX MAP

