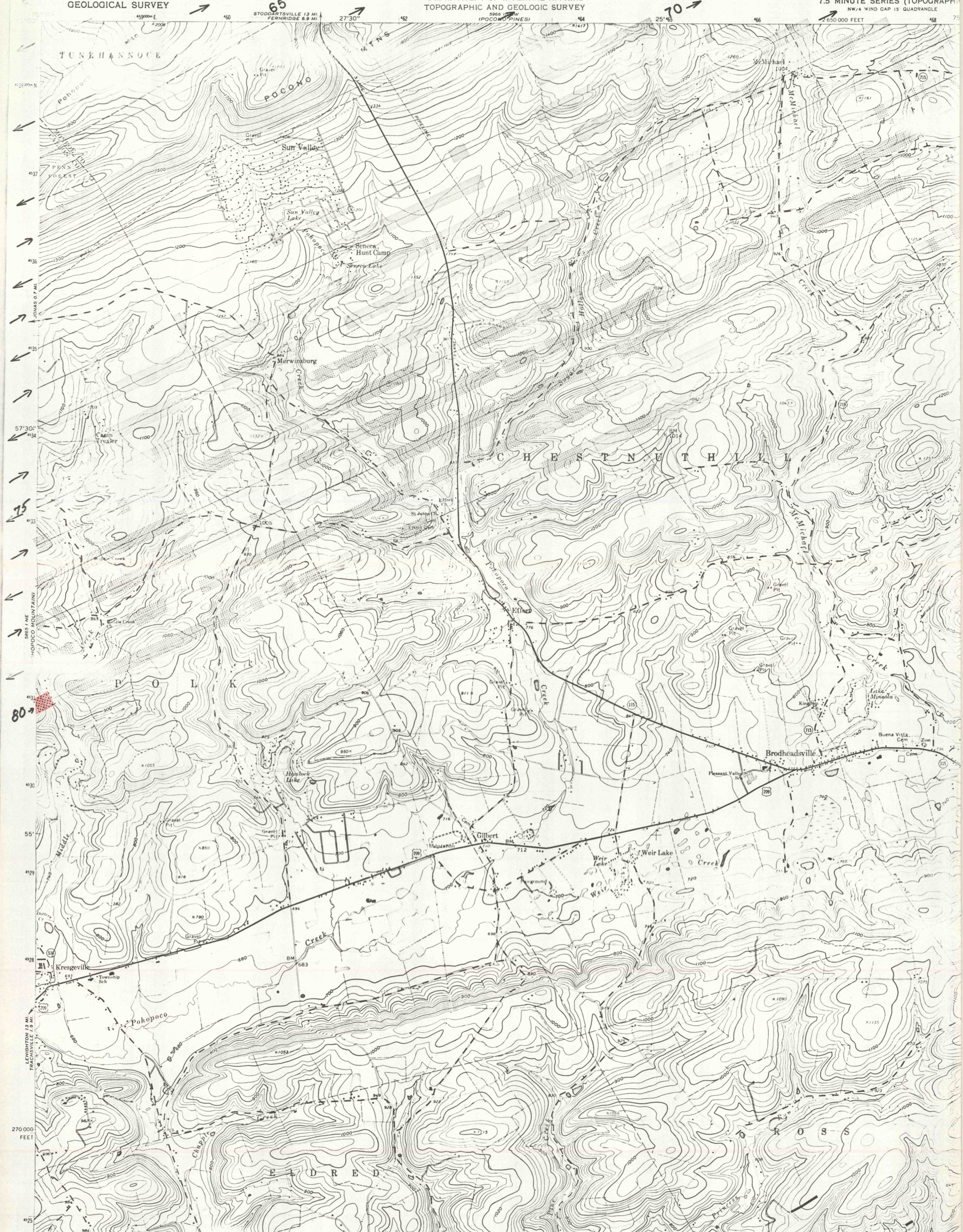
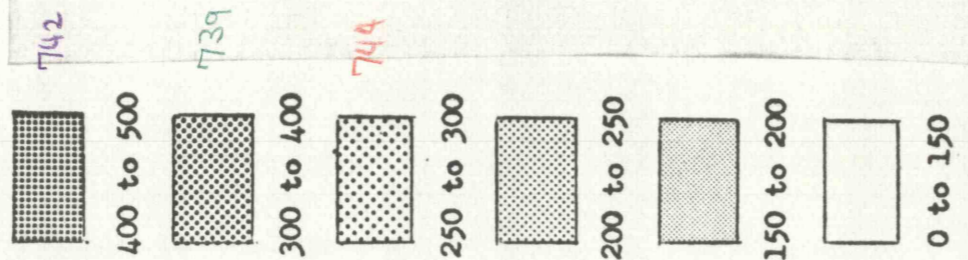


UNITED STATES  
DEPARTMENT OF THE INTERIOR  
GEOLOGICAL SURVEY

STATE OF PENNSYLVANIA  
DEPARTMENT OF INTERNAL AFFAIRS  
TOPOGRAPHIC AND GEOLOGIC SURVEY

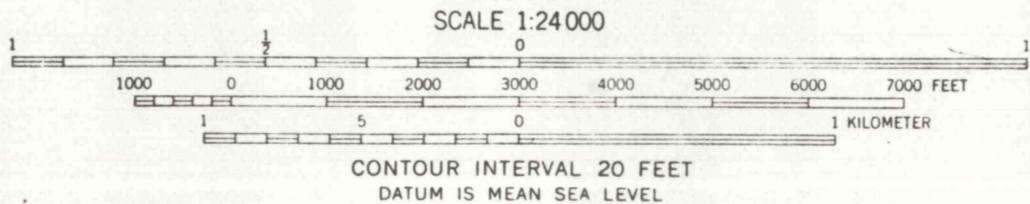
BRODHEADSVILLE QUADRANGLE  
PENNSYLVANIA  
7.5 MINUTE SERIES (TOPOGRAPHIC)  
NW/4 WIND GAP 15' QUADRANGLE

Explanation  
Approximate ranges of total gamma  
radioactivity recorded along  
flight lines (counts per second)



Mapped, edited, and published by the Geological Survey  
Control by USGS and USC&GS  
Topography from aerial photographs by photogrammetric methods  
Aerial photographs taken 1951-1952. Field check 1960  
Polyconic projection. 1927 North American datum  
10,000-foot grid based on Pennsylvania coordinate system, north zone  
1000-meter Universal Transverse Mercator grid ticks,  
zone 18, shown in blue  
Fine red dashed lines indicate selected fence and field lines where  
generally visible on aerial photographs. This information is unchecked  
Revisions shown in purple compiled in cooperation  
State of Pennsylvania agencies from aerial photographs taken  
1967-1970. This information not field checked

UTM GRID AND 1970 MAGNETIC NORTH  
DECLINATION AT CENTER OF SHEET



ROAD CLASSIFICATION  
Heavy-duty ——— Light-duty ———  
Medium-duty - - - - - Unimproved dirt ———  
U.S. Route □ State Route ○

BRODHEADSVILLE, PENNSYLVANIA  
NW 4 WIND GAP 15' QUADRANGLE  
N4052.5-W7522.5-7.5  
1960  
PHOTOREVISED 1970  
AMS 5965 IV NW-SERIES V831

AIRBORNE RADIOACTIVITY SURVEY OF PARTS OF CARBON, SCHUYLKILL,  
AND MONROE COUNTIES, PENNSYLVANIA  
by  
Harry Klemic and Margaret C. Cooper

THIS MAP COMPLIES WITH NATIONAL MAP ACCURACY STANDARDS  
FOR SALE BY U.S. GEOLOGICAL SURVEY, WASHINGTON, D.C. 20242  
A FOLDER DESCRIBING TOPOGRAPHIC MAPS AND SYMBOLS IS AVAILABLE ON REQUEST

U.S. Geological Survey  
OPEN FILE REPORT 75-91  
This report is preliminary and has  
not been edited or reviewed for  
conformity with Geological Survey  
standards or nomenclature.

Pennsylvania (Northeast) Radioactivity. 1:24,000. 1975  
Sheet 2  
Cop. 1,