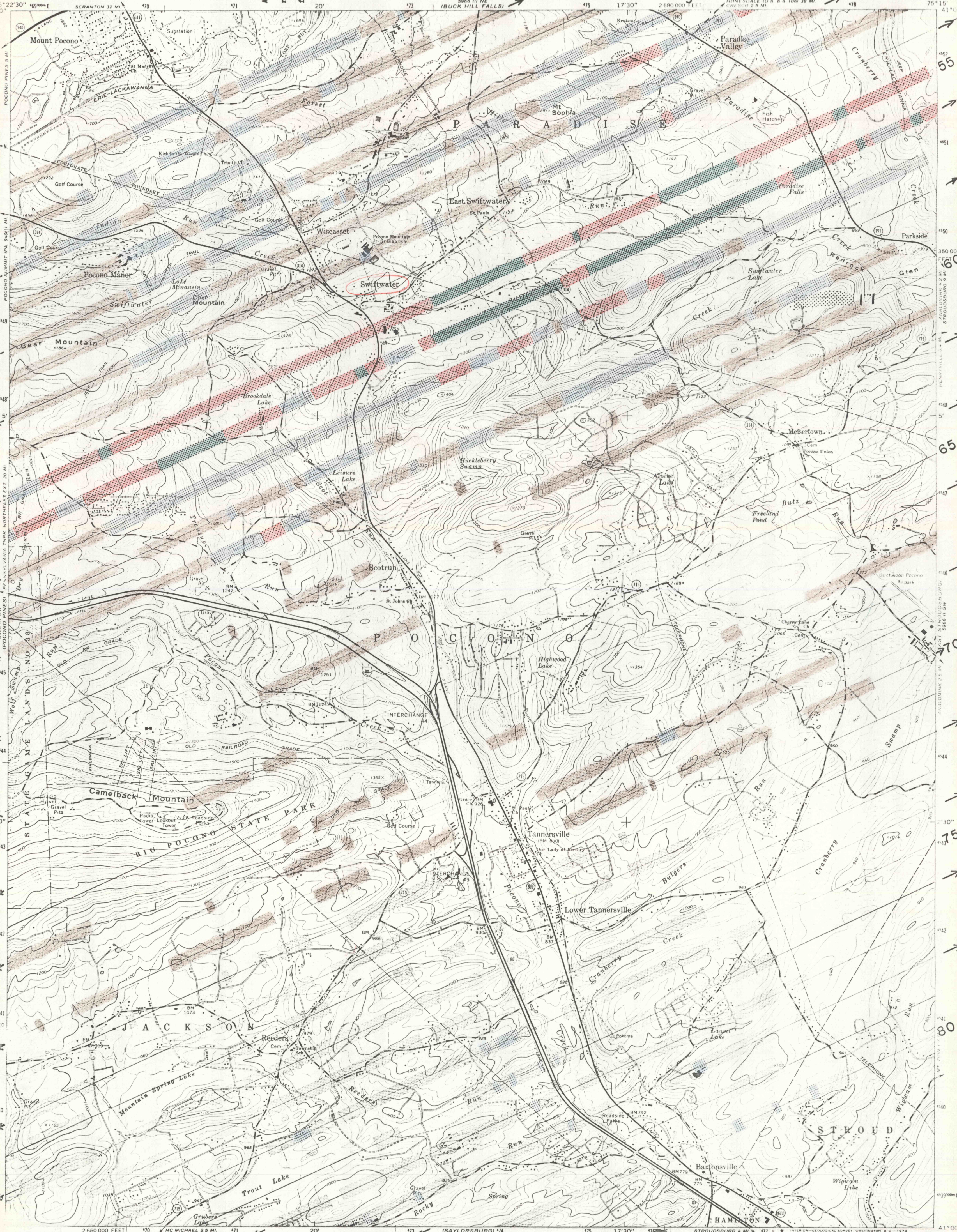
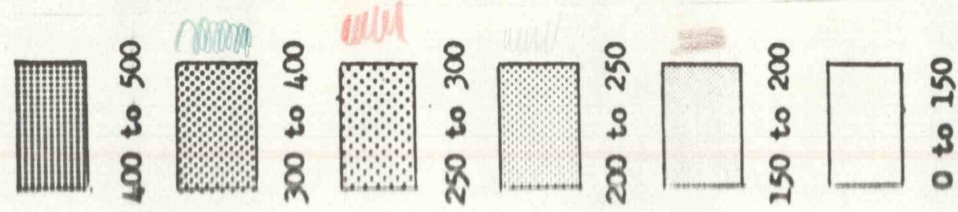


UNITED STATES  
DEPARTMENT OF THE INTERIOR  
GEOLOGICAL SURVEY

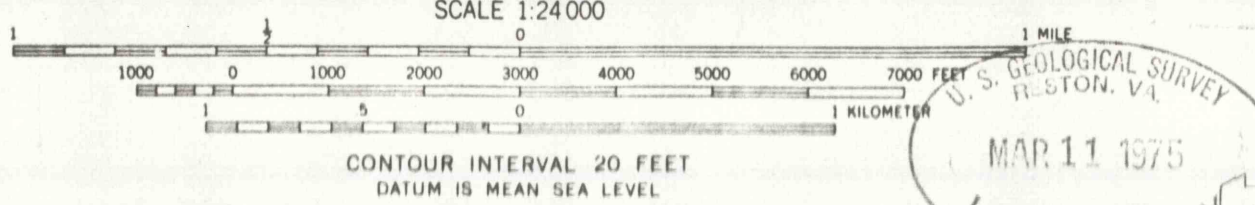
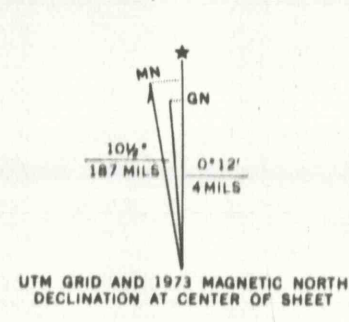
COMMONWEALTH OF PENNSYLVANIA  
DEPARTMENT OF ENVIRONMENTAL RESOURCES  
TOPOGRAPHIC AND GEOLOGIC SURVEY

MOUNT POCONO QUADRANGLE  
PENNSYLVANIA—MONROE CO.  
7.5 MINUTE SERIES (TOPOGRAPHIC)

Explanation  
Approximate ranges of total gamma  
radioactivity recorded along  
flight lines (counts per second)



Control by USGS and USC&GS  
Topography by photogrammetric methods from aerial photographs taken 1963 and 1965. Field checked 1966  
Polyconic projection. 1927 North American datum  
10,000 foot grid based on Pennsylvania coordinate system, north zone  
1000-meter Universal Transverse Mercator grid ticks, zone 18, shown in blue  
Fine red dashed lines indicate selected fence and field lines where generally visible on aerial photographs. This information is unchecked  
Revisions shown in purple compiled in cooperation with State of Pennsylvania agencies from aerial photographs taken 1973. This information not field checked



ROAD CLASSIFICATION  
Heavy duty ——— Light-duty ———  
Medium duty ——— Unimproved dirt ———  
○ Interstate Route □ U.S. Route ○ State Route

THIS MAP COMPLIES WITH NATIONAL MAP ACCURACY STANDARDS  
FOR SALE BY U.S. GEOLOGICAL SURVEY, WASHINGTON, D. C. 20242  
A FOLDER DESCRIBING TOPOGRAPHIC MAPS AND SYMBOLS IS AVAILABLE ON REQUEST

U.S. Geological Survey  
OPEN FILE REPORT 75-91  
This report is preliminary and has not been edited or reviewed for conformity with Geological Survey standards or nomenclature.

MOUNT POCONO, PA.  
N4100—W7515/7.5  
1966  
PHOTOREVISED 1973  
AMS 5966 III SE—SERIES V831

AIRBORNE RADIOACTIVITY SURVEY OF PARTS OF CARBON, SCHUYLKILL,  
AND MONROE COUNTIES, PENNSYLVANIA  
by  
Harry Klemic and Margaret C. Cooper

Pennsylvania (Northeast). Radioactivity. 1:24,000. 1975  
sheet 8  
cop. 1.