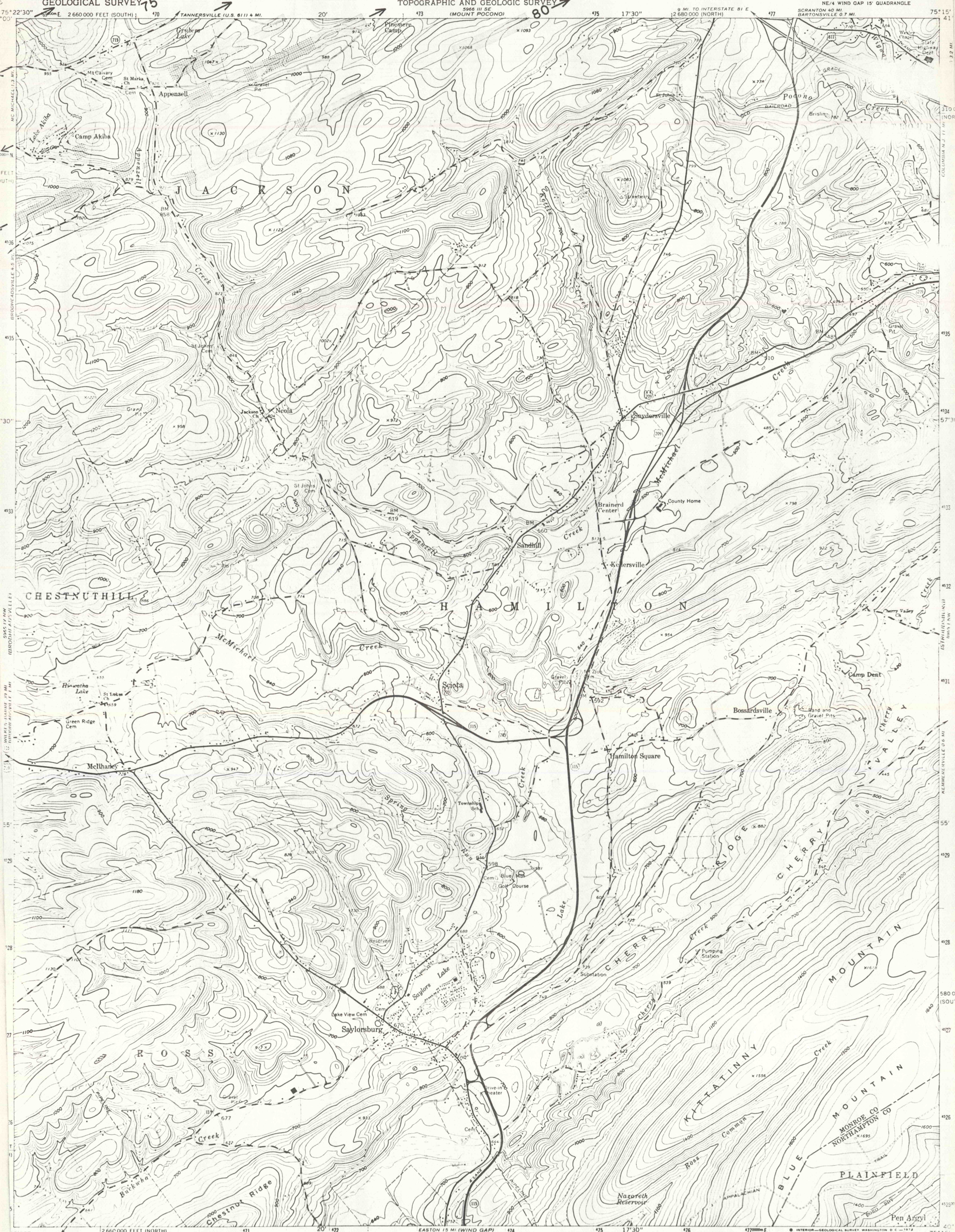


AIRBORNE RADIOACTIVITY SURVEY OF PARTS OF CARBON, SCHUYLKILL,  
AND MONROE COUNTIES, PENNSYLVANIA  
by  
Harry Klemic and Margaret C. Cooper

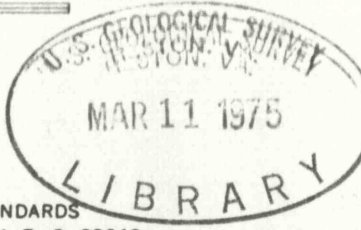
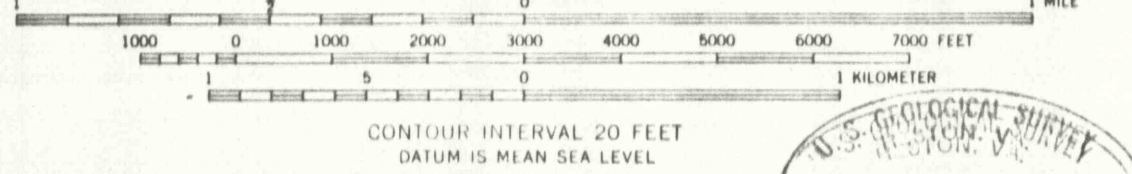
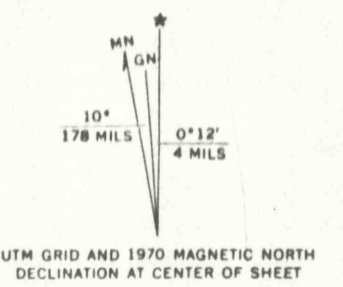
UNITED STATES  
DEPARTMENT OF THE INTERIOR  
GEOLOGICAL SURVEY 15

STATE OF PENNSYLVANIA  
DEPARTMENT OF INTERNAL AFFAIRS  
TOPOGRAPHIC AND GEOLOGIC SURVEY

SAYLORSBURG QUADRANGLE  
PENNSYLVANIA  
7.5 MINUTE SERIES (TOPOGRAPHIC)  
NE 1/4 WIND GAP 15' QUADRANGLE



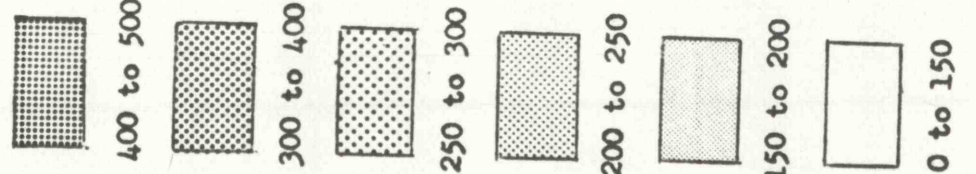
Mapped, edited, and published by the Geological Survey  
Control by USGS and USC&GS  
Topography by photogrammetric methods from aerial photographs  
taken 1951. Field checked 1960  
Polyconic projection. 1927 North American datum  
10,000-foot grids based on Pennsylvania coordinate system,  
north and south zones  
1000 meter Universal Transverse Mercator grid ticks,  
zone 18, shown in blue  
Faded dashed lines indicate selected fence and field lines where  
generally visible on aerial photographs. This information is unchecked  
Boundaries shown in purple compiled in cooperation with  
State of Pennsylvania agencies from aerial photographs  
taken 1970. This information not field checked



THIS MAP COMPLIES WITH NATIONAL MAP ACCURACY STANDARDS  
FOR SALE BY U.S. GEOLOGICAL SURVEY, WASHINGTON, D. C. 20242  
A FOLDER DESCRIBING TOPOGRAPHIC MAPS AND SYMBOLS IS AVAILABLE ON REQUEST

ROAD CLASSIFICATION  
Heavy duty ——— Light duty ———  
Medium duty - - - - - Unimproved dirt ·····  
U.S. Route ——— Interstate Route ———  
State Route ———  
SAYLORSBURG, PA.  
NE 1/4 WIND GAP 15' QUADRANGLE  
N4052.5—W7515.7.5  
1960  
PHOTOGRAPHIC  
AMS 5965 IV NE—SERIES

Explanation  
Approximate ranges of total gamma  
radioactivity recorded along  
flight lines (counts per second)



Pennsylvania (Northeast). Radioactivity. 1:24,000. 1975  
sheet 12  
Cop. 1,