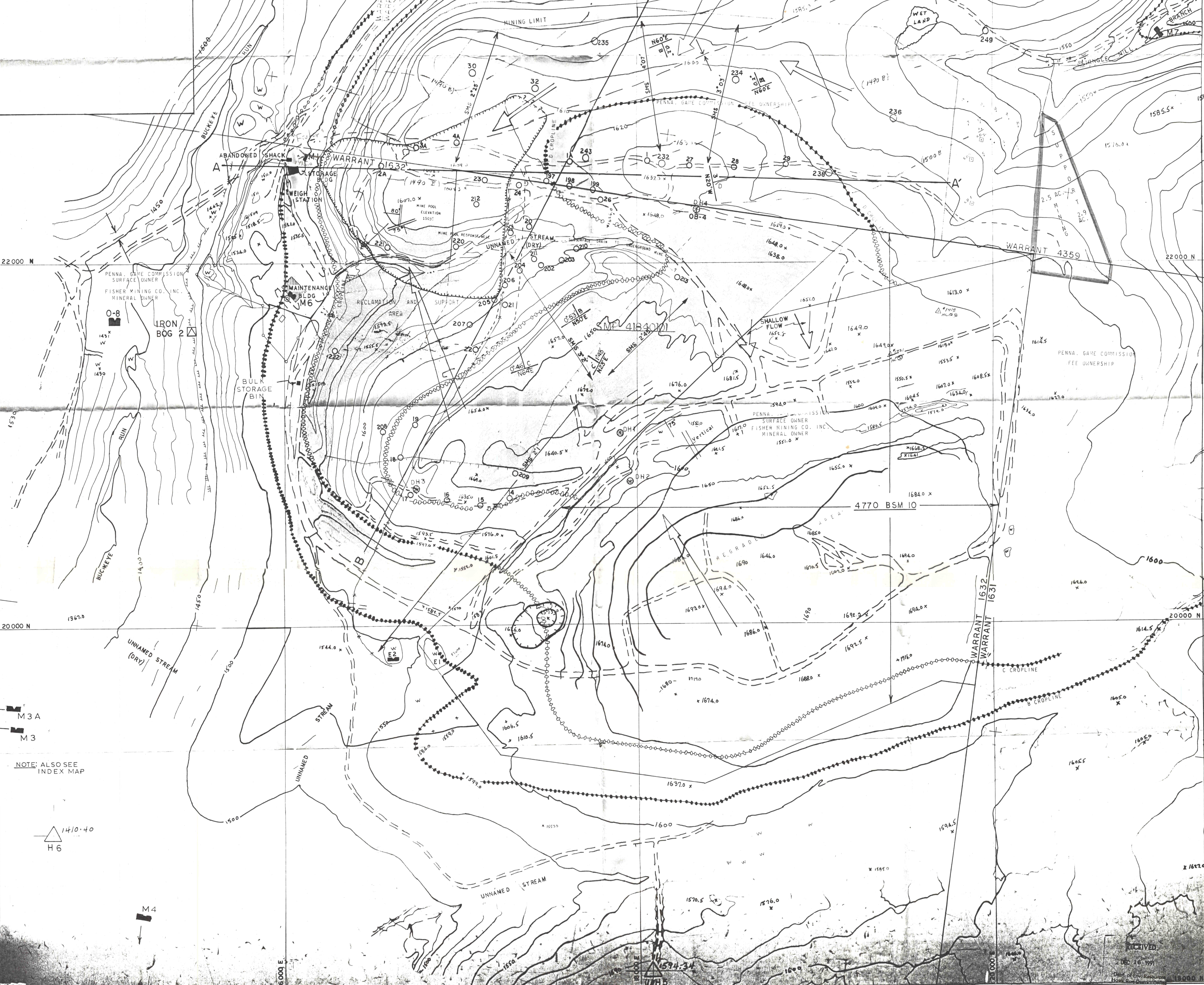


TEST HOLE	SURFACE ELEVATION	BOTTOM OF COAL	WATER LEVEL
1	1633.7	1610	1526.7
1A	1620.7	1607	1518.3
2A	1592.8	1571.5	1488.4
3A	1602.9	1524.1	1502.77
34	1603.3	1523.9	1502.4
27	1633.8	1528.5	1528.8
28	1617.9	1530.2	1547.87
29	1598.9	1521.1	1528.9
ALL ABOVE SCHEMATIC DATA - 1971			
08-A	1632	1532	1501
30	1603.3	1526.3	1492
32	1570.4	1528.9	1481.4
197	1609.7	1521.7	1485.7
198	1611.3	1523.8	1489.8
199	1627.5	1517.5	1481.5
212	1609.91	1504.4	1501.4
220	1575.5	1525.0	1496.0
221	1581.1	1535.7	1497.7
232	1634.7	1523.2	1490.7
234	1598.1	1515.1	1487.7
235	1580.3	1516.3	1483.1
236	1579.0	1516.0	1484.5
238	1595.7	1508.7	1497.7
243	1621.8	1519.8	1484.5
246	1547.5	1520.5	1488.5
247	1580.0	1520.0	1490.0
248	1588.3	1516.8	1486.2
249	1571.8	1520.3	1486.3



NOTE: ALSO SEE INDEX MAP

REVISIONS
9/84 HYDRAULIC SEALS DELETED-SUPPORT AREA INCREASED.

NOTES

- PROPOSED PERMIT
- EXISTING PERMIT 4184010
- EXISTING PERMIT 47709115
- EXISTING MAINT. ROADS
- SLOPE MEASUREMENT
- ESTIMATED LIMIT OF DEEP MINE POOL
- TEST HOLE
- STRIP AND DIP
- KITTANNING (B) CROPLINE
- MIDDLE KITTANNING (C) CROPLINE
- LOWER FREEPORT (D) CROPLINE
- COAL (STRIPPED OUT)
- GROUND WATER FLOW
- PRIVATE WELL (FINDER)
- MONITORING POINT (SEE MAP FOR TAG)
- OVERBURDEN ANALYSIS TEST HOLES
- PROPOSED PERMIT SUPPORT AREA
- 1000 WOOD
- FLOWS ABOVE C COAL
- SLEEP LINE
- UNDERGROUND MINE
- SURFACE MINE

LEGEND



EXHIBIT 6.2 ENVIRONMENTAL RESOURCES MAP
FISHER MINING CO. INC. SMP 4184010
PINE TOWNSHIP, LYCOMING COUNTY, PENNSYLVANIA
SCALE 1" = 200 FEET CONTOUR INTERVAL = 10 FEET
PREPARED BY JENSEN-KOPPE AND ASSOCIATES
EDWIN F. KOPPE, GEOLOGIST
MAY 1984 MSHA 10H 36-02703

4184010