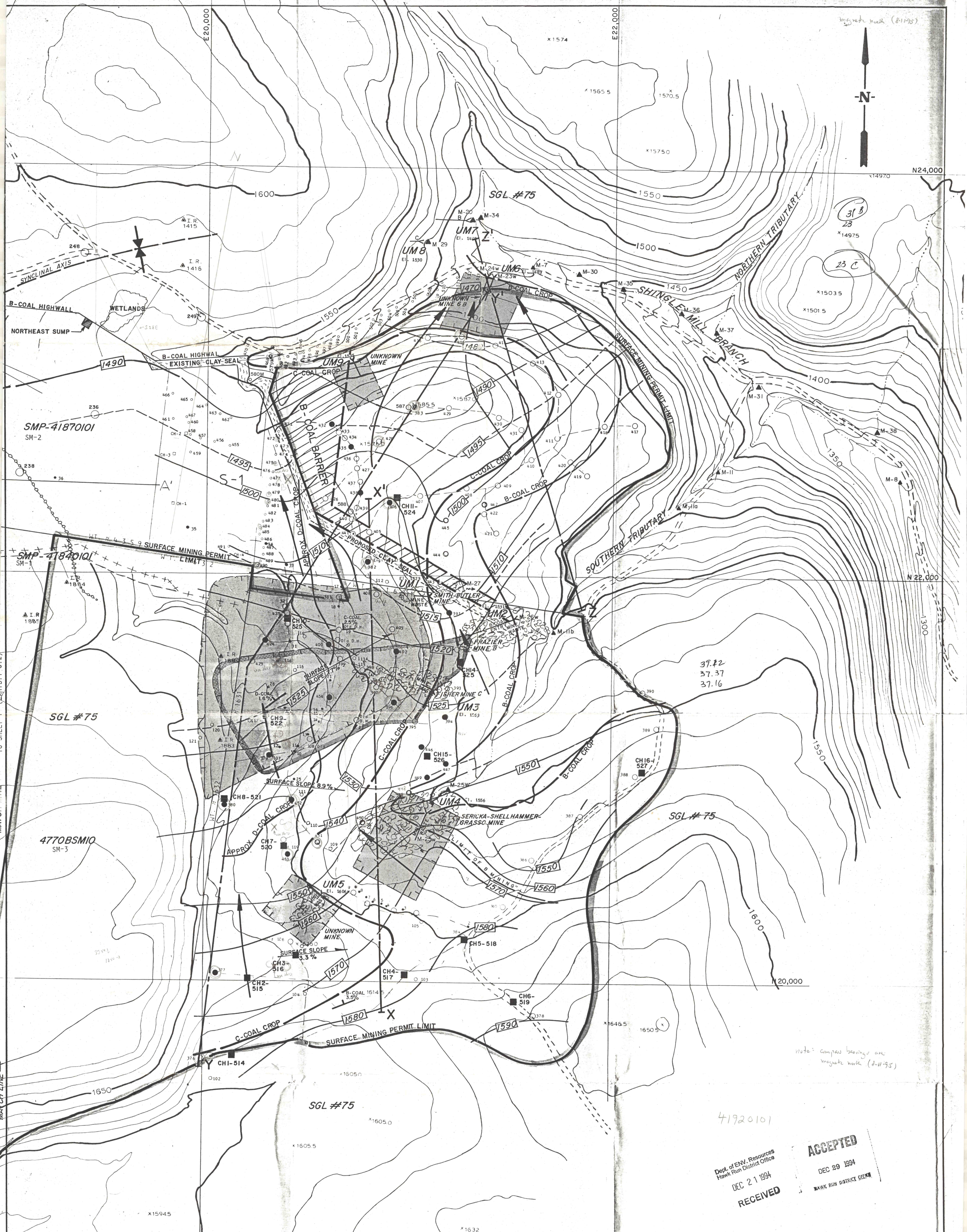


Mag. north mark (8-11-95)



37.22
37.37
37.16

Note: Complex bearings are magnetic north (8-11-95)

41920101

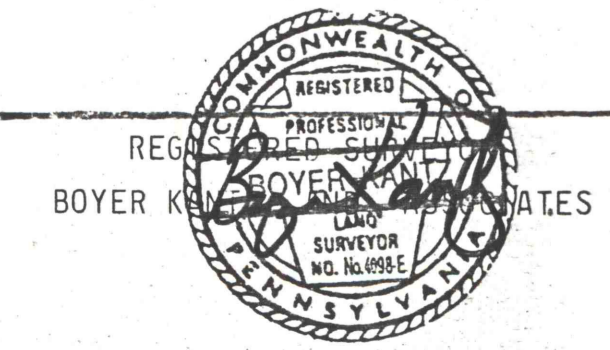
Dept. of Env. Resources
Hawk Run District Office
DEC 21 1994
RECEIVED

ACCEPTED
DEC 29 1994
HAWK RUN DISTRICT OFFICE

- LEGEND:
- COAL CROPLINE B-C-D
 - EXISTING GROUND CONTOUR C.I. = 10 FT.
 - CROPLINE BARRIER
 - TRANSVERSE BARRIER
 - C-VEIN MINE POOL PERIMETER SL-160
 - B-VEIN MINE POOL PERIMETER SL-160
 - ESTIMATED UNDERGROUND LIMITS
 - MINE WASTE
 - UNDERGROUND MINE ENTRY
 - MONITOR POINT W-WEIR

- BACKGROUND AND PROPOSED MONITORING POINTS
- | | |
|------|-------|
| M-1 | M-11a |
| M-2 | M-11b |
| M-3a | M-23w |
| M-6 | M-24w |
| M-7 | M-25w |
| M-8 | M-26w |
| M-11 | M-27 |
- USED FOR OVERBURDEN RATIO 7/15/92

Edgar W. Meiser
HYDROGEOLOGIST
MEISER & EARL



9/4/92	ADDED	M-25W-RELOCATION	M-20, M-29, M-30, M-31
12/6/94	REVISED	SMP LIMIT, B-COAL BARRIER	
12/9/94	ADDED	M-34, M-35, M-36, M-37, N-E SUMP, CLAY SEAL	
REVISIONS			
1" = 200'		Fisher Mining Co. Pine Township, Lycoming County, PA Frazier Mine Complex PA Game Lands #75	
DES.	EM	3/92	EXHIBIT 6.2 ENVIRONMENTAL RESOURCE MAP
DWN.	KMH	3/92	
CHK.	EM	3/92	
RVW.	EM	3/92	
Meiser & Earl, Inc., / Hydrogeologists 1512 W. College Ave. State College, PA (814) 234-0813			PLATE 1 2 / 2

add