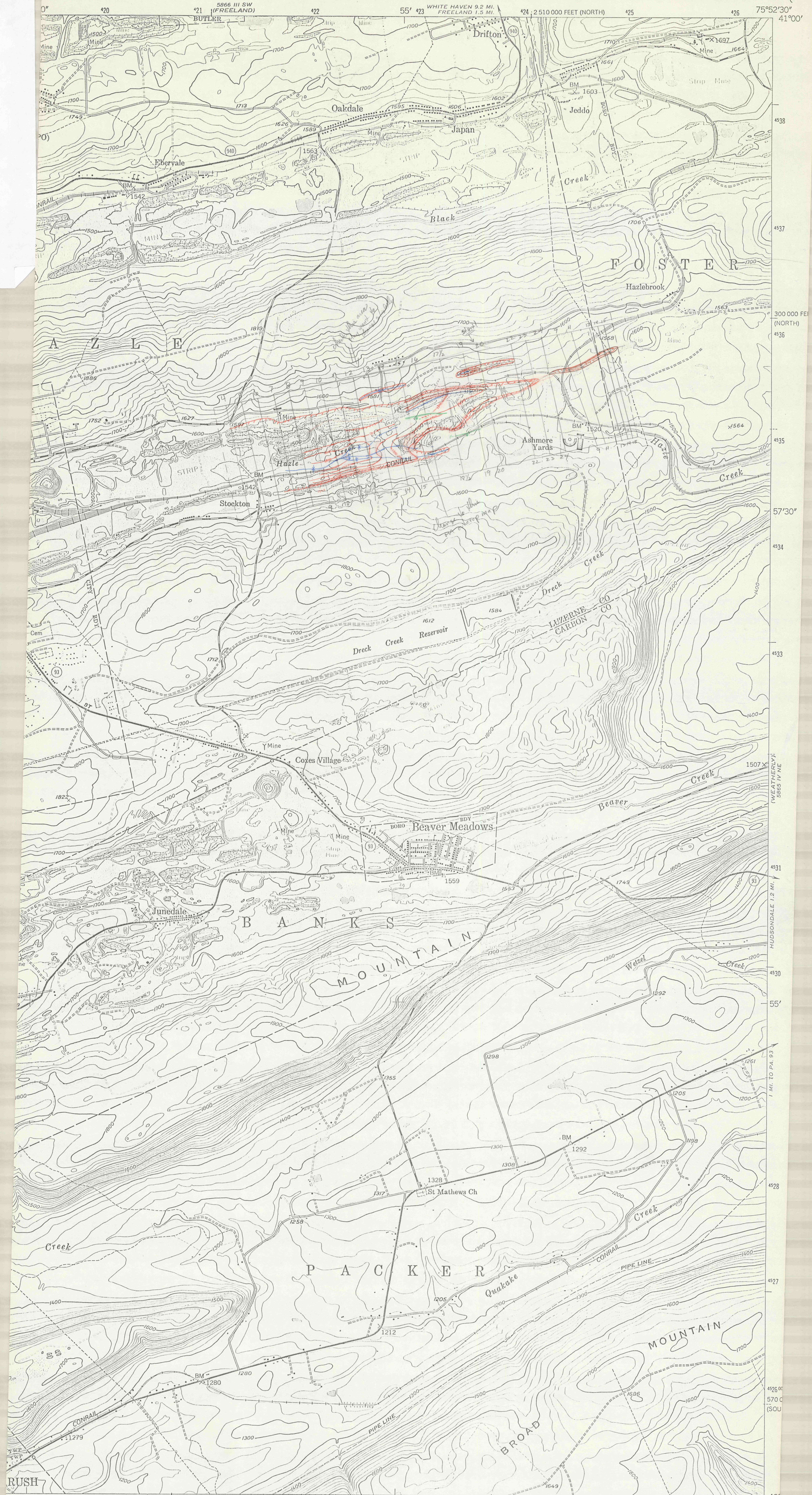
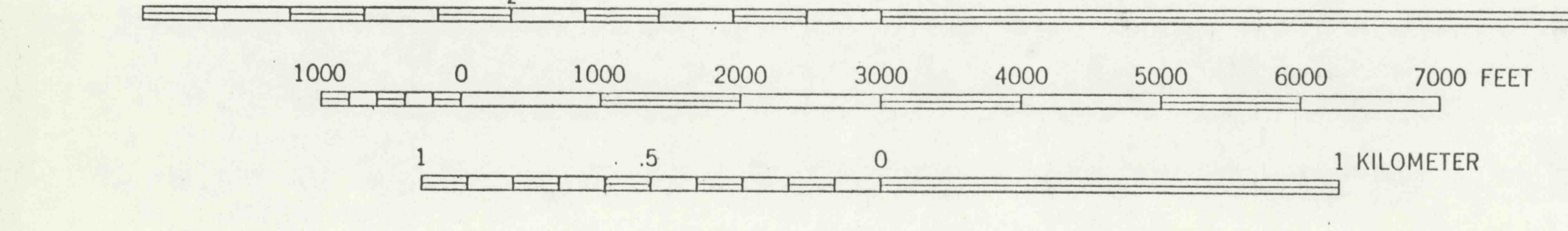


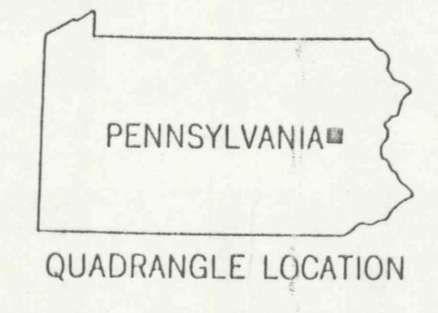
5866 III SW (WHITTE H)



19 57'30" 420 (TAMAGUA) 5865 IV SW SCALE 1:24000 55' 423 2 510 000 FEET (SOUTH) 424 425 75°52'30" 40°



CONTOUR INTERVAL 20 FEET NATIONAL GEODETIC VERTICAL DATUM OF 1929



ROAD CLASSIFICATION

Heavy-duty	Light-duty
Medium-duty	Unimproved dirt
○ State Route	

HAZLETON, PA.

N4052.5—W7552.5/7.5

1947 PHOTOREVISED 1969 AND 1978 AMS 5865 IV NW—SERIES V831

Photoinspected 1980 - no major changes observed

THIS MAP COMPLIES WITH NATIONAL MAP ACCURACY STANDARDS FOR SALE BY U. S. GEOLOGICAL SURVEY, RESTON, VIRGINIA 22092 A FOLDER DESCRIBING TOPOGRAPHIC MAPS AND SYMBOLS IS AVAILABLE ON REQUEST