


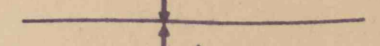
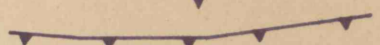
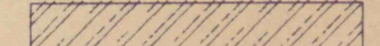
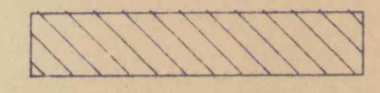
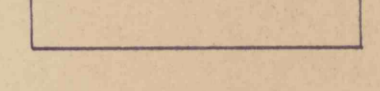


NOTICE

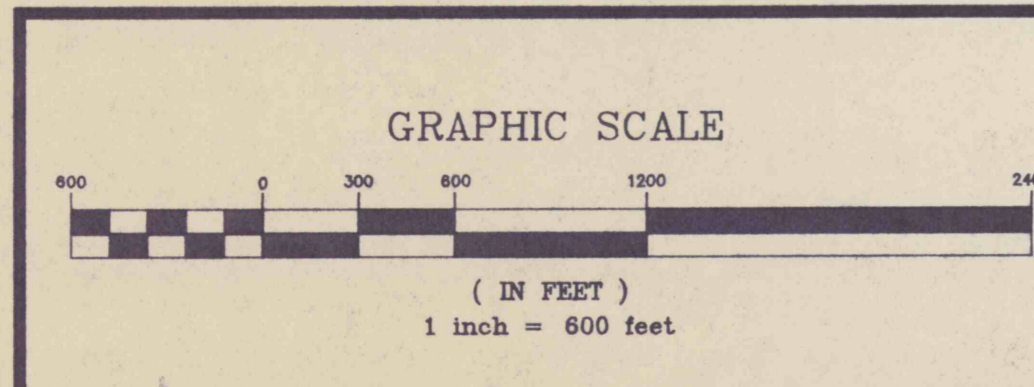
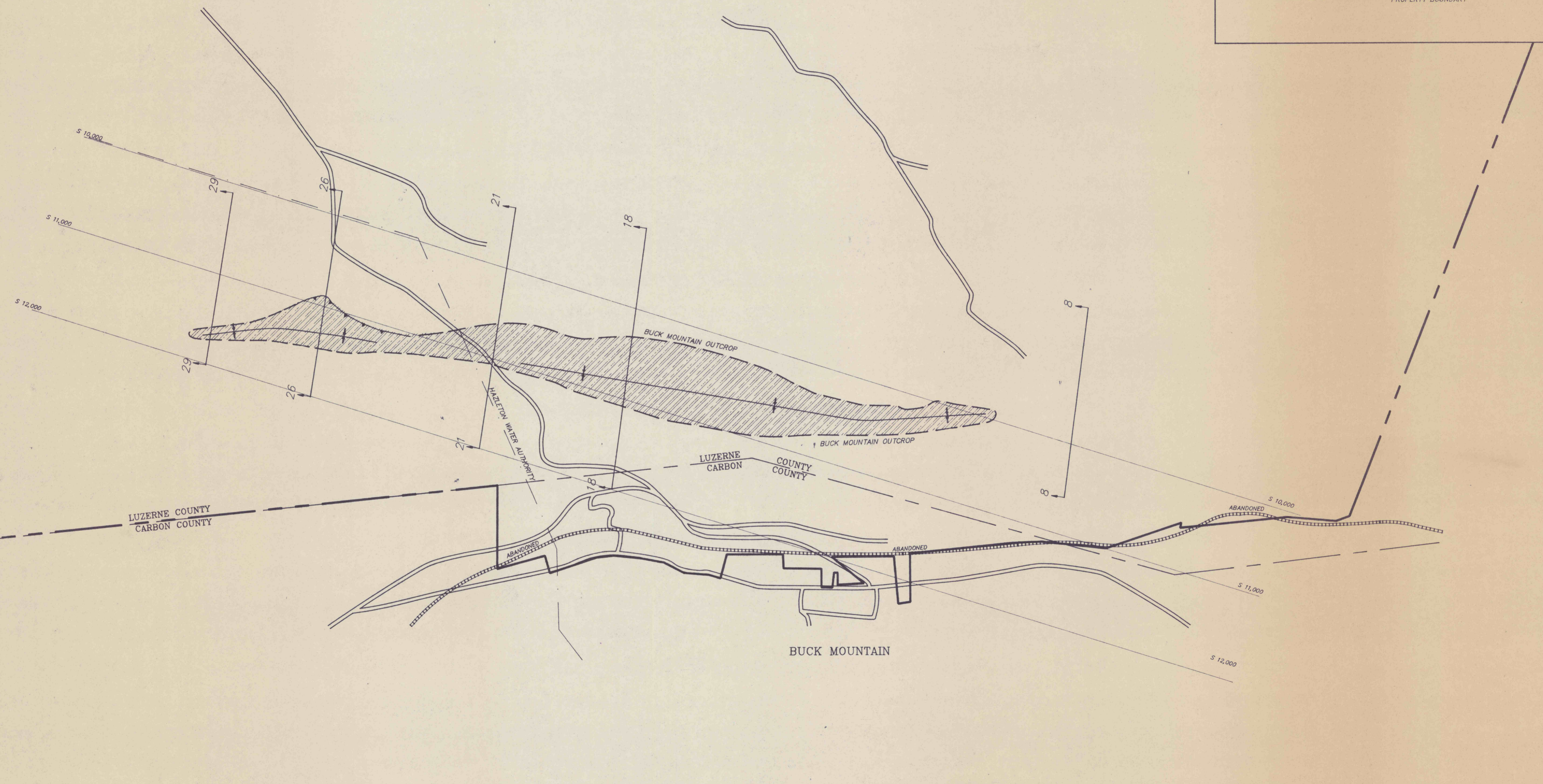
The information contained on this map should not be considered as exhaustive or conclusive as to the actual economic mineability of any particular site. The information displayed is drawn from mining maps, cross-sections, and aerial photographs which are believed to be reliable, but cannot be absolutely verified as such. Areas indicated as potential surface mining sites are recommended for further investigation and not warranted as having been proven to be economically viable.

Indicated coal resource tonnages are derived from such information as is currently available and should be considered to be approximate estimates. Coal thickness values are based upon the average of net coal thicknesses (not "vein" thicknesses) shown on available mining maps adjusted for average dip of the coal veins. Coal density is assumed to be 0.047 short tons per cubic foot. All coal areas are treated as having been previously mined underground with a net original average recovery of 60 percent. All figures are coal in-place and do not allow for potential operational mining losses.

Legal, environmental, marketability or other non-mining factors have not been considered.

LEGEND

-  COAL OUTCROP
-  SYNCLINE AXIS
-  ANTICLINE AXIS
-  THRUST FAULT TRACE (BARBS ON OVERTHRUST BLOCK)
-  APPROXIMATE AREA OF PAST STRIP MINING
-  ESTIMATED AREA OF CURRENTLY FEASIBLE STRIP MINING
-  CROSS-SECTION LINE
-  PROPERTY BOUNDARY



NO.	DATE	REVISION DESCRIPTION	BY

DRAFT COPY

Prepared by
William E. Edmunds
Professional Geologist
Reg. No. 000117

TETHYS Consultants, Inc.
Specializing in Earth and Environmental Sciences

Suite 234, Building 3, 2001 N. Front Street
Harrisburg, PA 17102

717-BED-ROCK 717-233-7625

DRAWN BY	SRL
APPROVED BY	WEE
DATE	06/30/94
SCALE	1"=600'
CONTOUR	N/A
PROJECT NO.	T-1193
DRAWING NO.	T-1193-018

PLATE 18
COAL RESOURCES OF THE
ECKLEY SOUTH PROPERTY
BUCK MOUNTAIN VEIN, SOUTH BLOCK

BELTRAMI ENTERPRISES, INC.
LUZERNE COUNTY
PENNSYLVANIA