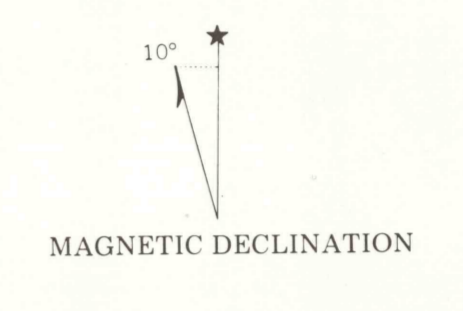
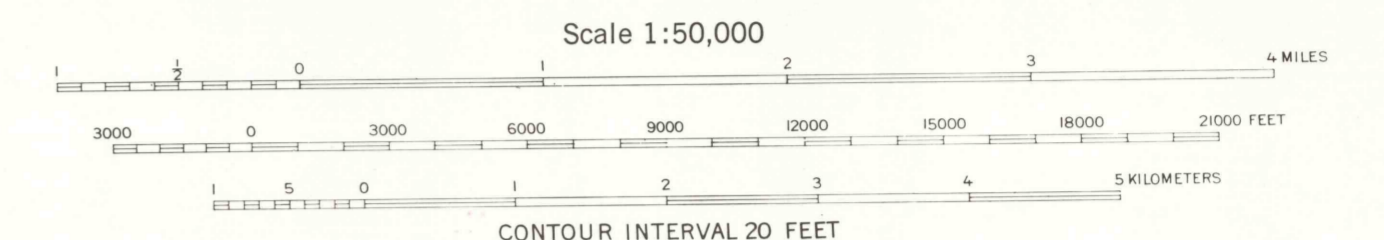
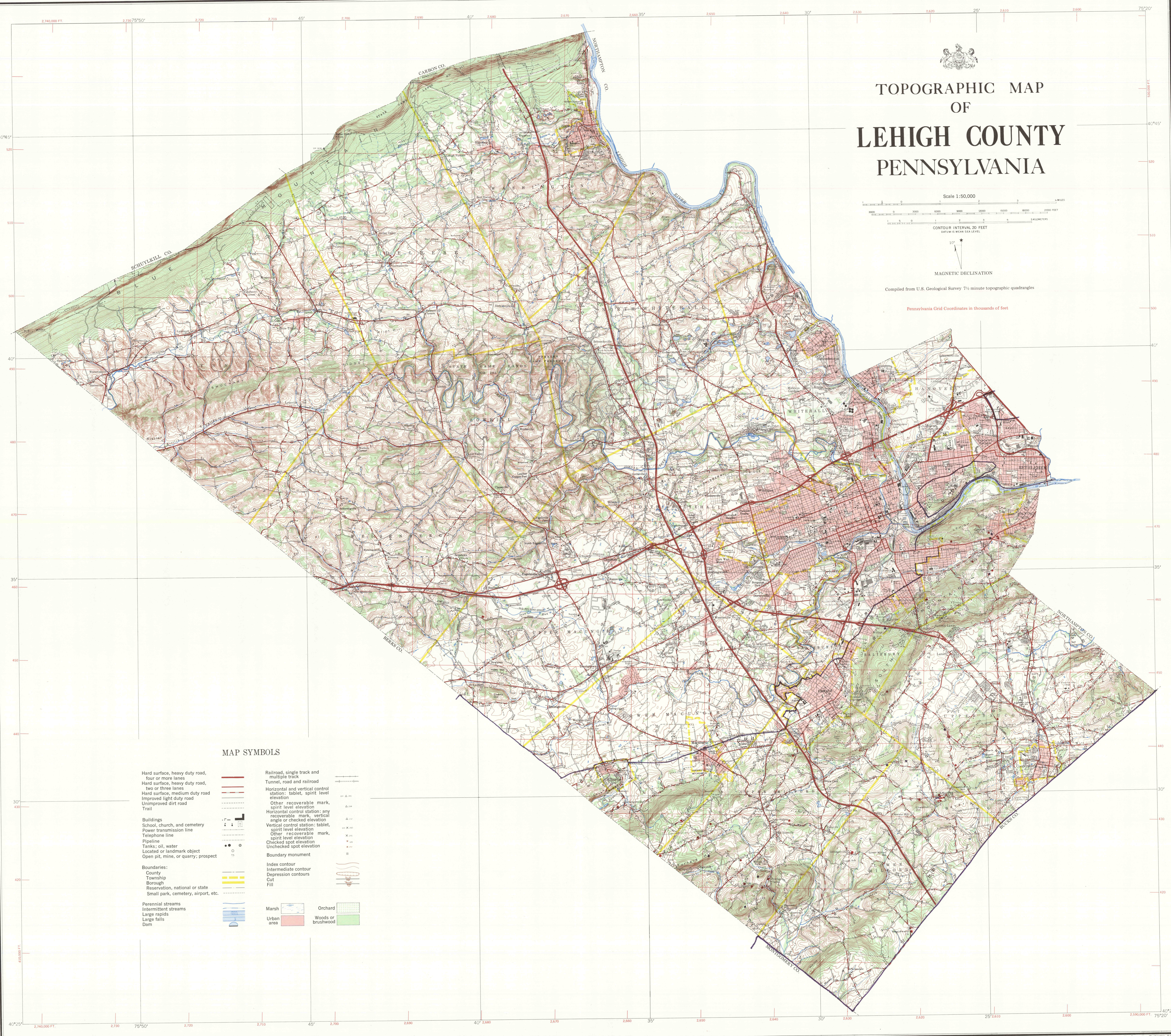


TOPOGRAPHIC MAP OF LEHIGH COUNTY PENNSYLVANIA



Compiled from U.S. Geological Survey 7 1/2 minute topographic quadrangles

Pennsylvania Grid Coordinates in thousands of feet



MAP SYMBOLS

- | | | | |
|---|--|--|--|
| <ul style="list-style-type: none"> Hard surface, heavy duty road, four or more lanes Hard surface, heavy duty road, two or three lanes Hard surface, medium duty road Improved light duty road Unimproved dirt road Trail | <ul style="list-style-type: none"> Buildings School, church, and cemetery Power transmission line Telephone line Pipeline Tanks; oil, water Located or landmark object Open pit, mine, or quarry; prospect | <ul style="list-style-type: none"> Railroad, single track and multiple track Tunnel, road and railroad Horizontal and vertical control station: tablet, spirit level elevation Other recoverable mark, spirit level elevation Horizontal control station: any recoverable mark, vertical angle or checked elevation Vertical control station: tablet, spirit level elevation Other recoverable mark, spirit level elevation Checked spot elevation Unchecked spot elevation Boundary monument Index contour Intermediate contour Depression contours Cut Fill | <ul style="list-style-type: none"> Marsh Urban area Orchard Woods or brushwood |
|---|--|--|--|