

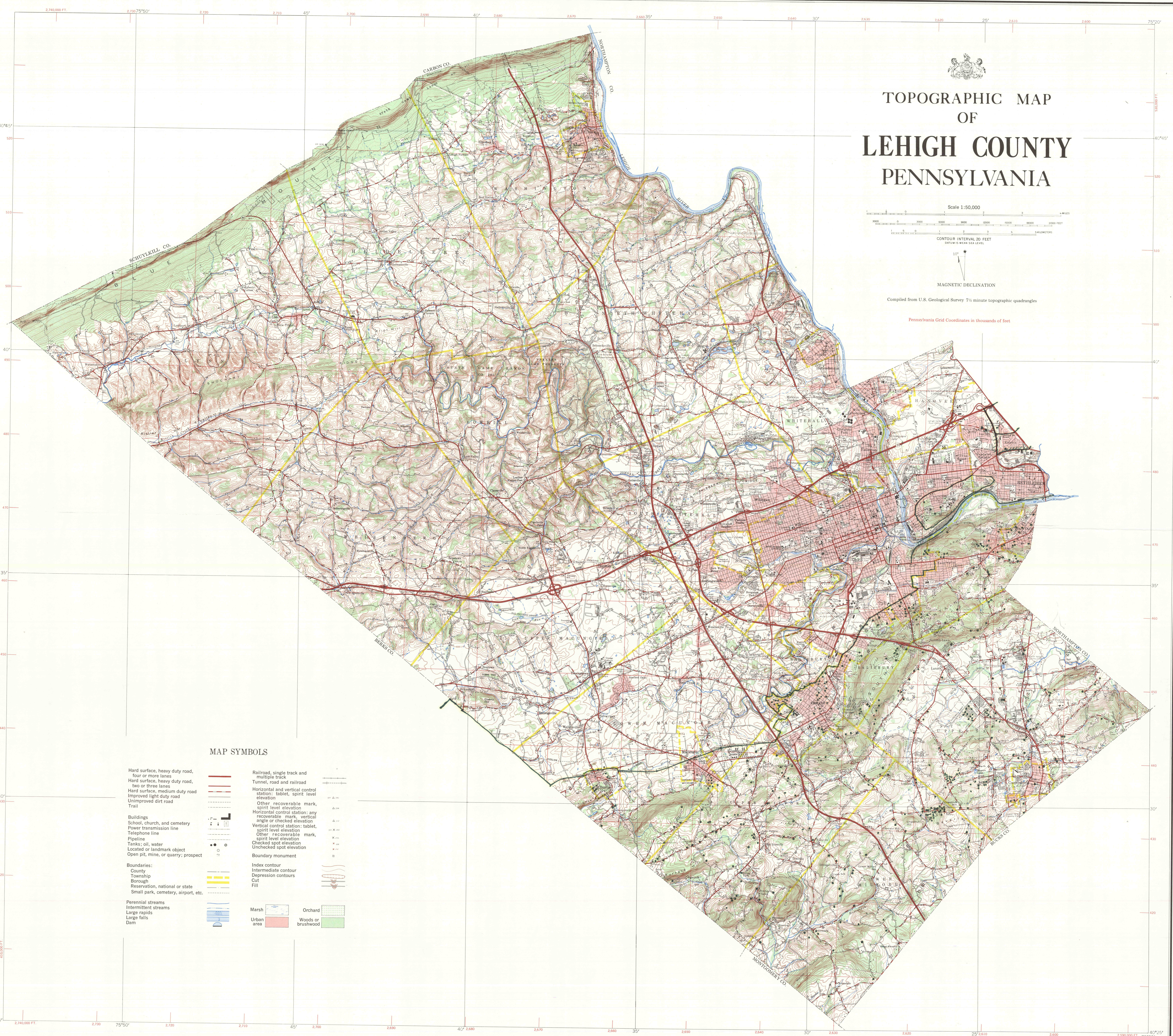
# TOPOGRAPHIC MAP OF LEHIGH COUNTY PENNSYLVANIA

Scale 1:50,000  
CONTOUR INTERVAL 20 FEET  
DATUM IS MEAN SEA LEVEL

MAGNETIC DECLINATION  
11°

Compiled from U.S. Geological Survey 7 1/2 minute topographic quadrangles

Pennsylvania Grid Coordinates in thousands of feet



### MAP SYMBOLS

- |   |  |   |  |
|---|--|---|--|
| Hard surface, heavy duty road, four or more lanes |  | Railroad, single track and multiple track   |  |
| Hard surface, heavy duty road, two or three lanes |  | Tunnel, road and railroad   |  |
| Hard surface, medium duty road                    |  | Horizontal and vertical control station: tablet, spirit level elevation               |  |
| Improved light duty road                          |  | Other recoverable mark, spirit level elevation  |  |
| Unimproved dirt road                              |  | Horizontal control station: any recoverable mark, vertical angle or checked elevation |  |
| Trail   |  | Vertical control station: tablet, spirit level elevation                              |  |
| Buildings   |  | Other recoverable mark, spirit level elevation  |  |
| School, church, and cemetery                      |  | Checked spot elevation  |  |
| Power transmission line                           |  | Unchecked spot elevation  |  |
| Telephone line                                    |  | Boundary monument   |  |
| Pipeline  |  | Index contour   |  |
| Tanks; oil, water                                 |  | Intermediate contour  |  |
| Located or landmark object                        |  | Depression contours   |  |
| Open pit, mine, or quarry; prospect               |  | Cut   |  |
| Boundaries:                                       |  | Fill  |  |
| County  |  |   |  |
| Township  |  | Marsh   |  |
| Borough   |  | Orchard   |  |
| Reservation, national or state                    |  | Urban area  |  |
| Small park, cemetery, airport, etc.               |  | Woods or brushwood  |  |
| Perennial streams                                 |  |   |  |
| Intermittent streams                              |  |   |  |
| Large rapids                                      |  |   |  |
| Large falls                                       |  |   |  |
| Dam   |  |   |  |