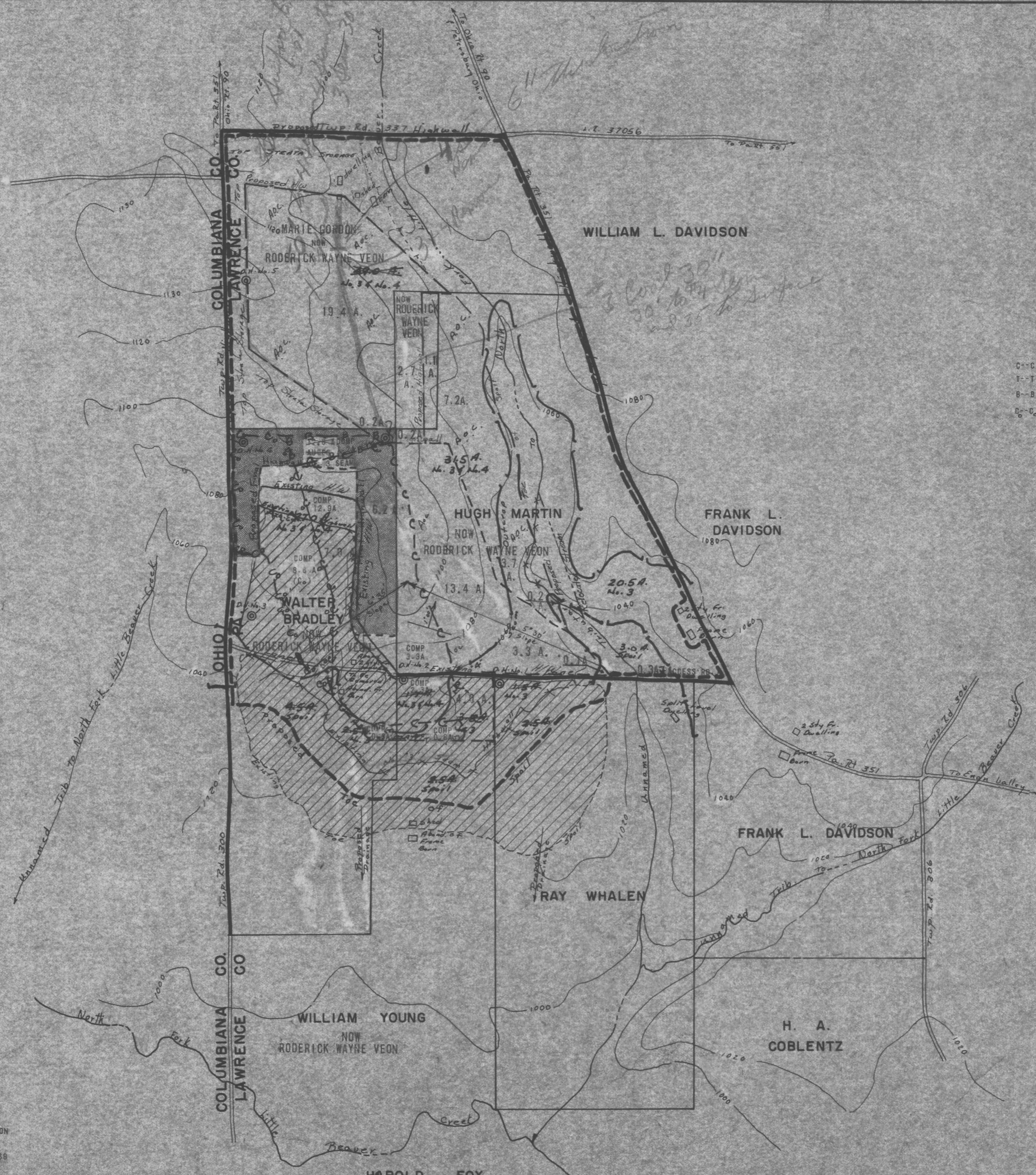




LOCATION MAP  
SCALE 1" = 1 MILE



C-C	COMPLETION REPORT	MAY 1975	40-16	18.5 A.
T-T	TOPSOIL STORAGE AREA RESTORED	MAY 1975		1.1 A.
B-B	AFFECTED IN BACKFILL	MAY 1975		1.2 A.
D-C	OLD SPOIL RESTORED BY RALPH A. VEON, INC. AT REQUEST OF LANDOWNER	MAY 1975		8.8 A.

TOP STRATA STORAGE  
NOTE: TOP STRATA ALSO TO BE STORED WITHIN PERMITTED AREA.

RELOCATED SECTION OF UNNAMED TRIBUTARY TO NORTH FORK LITTLE BEAVER CREEK - CHANNEL RELOCATION PERMIT NO. 3773701, APPROVED 5-8-74

[Hatched Box]	PROPOSED AREA OCTOBER 1972	34.0 A.
[Solid Box]	AMENDED PERMIT JANUARY 1975 * INCLUDES 0.3 A. - ACCESS ROAD	12.5 A.
[Dotted Box]	AMENDED AREA JULY 1975	22.5 A.

AREA UNDERLAIN WITH COAL 62.7 A.

RODERICK WAYNE VEON PROPERTIES

**L. S. TAYLOR ENGINEERING**  
ENGINEERS - SURVEYORS - TOPOGRAPHERS  
CLARION, PA.

PERMIT APPLICATION MAP  
FOR  
**RALPH A. VEON, INC.**

SCALE 1" = 400' FILE NO. 25888SM52 40-16  
DATE OCT. 1966 SHEET NO. 17

[Symbol] AREA OF PROPOSED AUGER OPERATION  
[Symbol] ACTIVE OPERATION AS OF 1-20-69  
[Symbol] PROPOSED STRIPPING

REVISED JANUARY 1969

CHANGED FROM MINE DRAINAGE MAP OCTOBER 1972