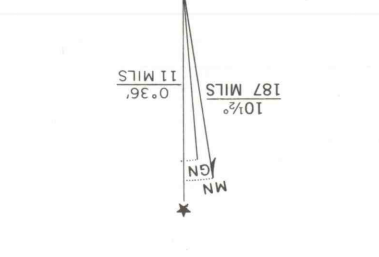
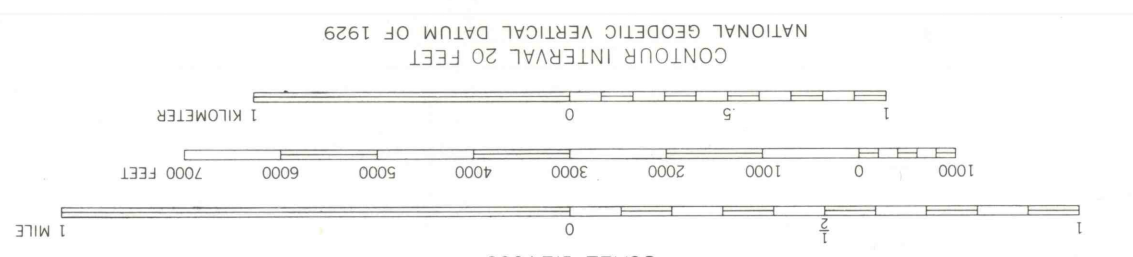
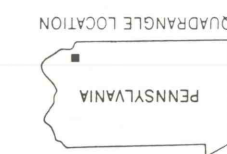


STATE ROUTE 112  
 STATE ROUTE 113  
 ROAD CLASSIFICATION  
 Heavy-duty  
 Medium-duty  
 Light-duty  
 Unimproved dirt  
 U.S. Route  
 State Route



Mapped, edited, and published by the Geological Survey  
 Contour by USGS, NOS/NOAA, and USDA  
 Topography by photogrammetric methods from aerial  
 photographs taken 1951. Field checked 1955  
 Polyconic projection. 10,000-foot grid ticks based on  
 Pennsylvania coordinate system, south zone  
 180-meter Universal Transverse Mercator grid ticks, zone  
 18, shown in blue. 1927 North American Datum 1983  
 To place the projection lines 6 meters south and 25 meters  
 west as shown by dashed corner ticks  
 Revisions shown in purple and woodland compiled from  
 aerial photographs taken 1981 and other sources. This  
 information not field checked. Map edited 1983

THIS MAP COMPLIES WITH NATIONAL MAP ACCURACY STANDARDS  
 FOR SALE BY U.S. GEOLOGICAL SURVEY, RESTON, VIRGINIA 22092  
 A FOLDER DESCRIBING TOPOGRAPHIC MAPS AND SYMBOLS IS AVAILABLE ON REQUEST



57° 30' N  
 76° 00' W

76° 00' W  
 75° 30' W  
 40° 00' N  
 39° 30' N  
 39° 00' N  
 38° 30' N  
 38° 00' N  
 37° 30' N  
 37° 00' N  
 36° 30' N  
 36° 00' N  
 35° 30' N  
 35° 00' N  
 34° 30' N  
 34° 00' N  
 33° 30' N  
 33° 00' N  
 32° 30' N  
 32° 00' N  
 31° 30' N  
 31° 00' N  
 30° 30' N  
 30° 00' N

40° 00' N  
 39° 30' N  
 39° 00' N  
 38° 30' N  
 38° 00' N  
 37° 30' N  
 37° 00' N  
 36° 30' N  
 36° 00' N  
 35° 30' N  
 35° 00' N  
 34° 30' N  
 34° 00' N  
 33° 30' N  
 33° 00' N  
 32° 30' N  
 32° 00' N  
 31° 30' N  
 31° 00' N  
 30° 30' N  
 30° 00' N