

SURFICIAL GEOLOGY OF THE WAKEFIELD 7.5' QUADRANGLE, PA

Open-File Report 96-11

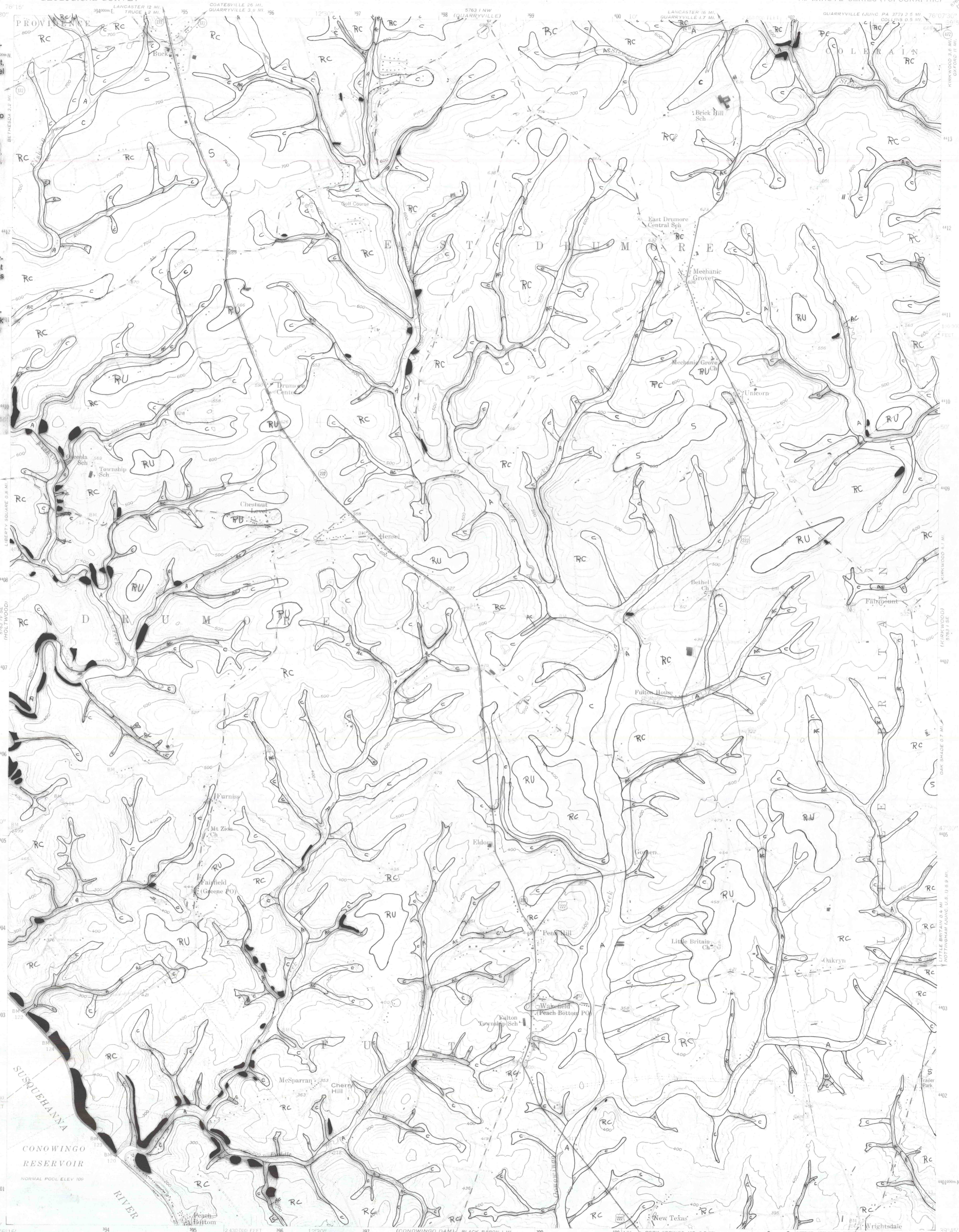
WAKEFIELD QUADRANGLE
PENNSYLVANIA—LANCASTER CO.
7.5 MINUTE SERIES (TOPOGRAPHIC)

by W. D. Sevon
1996

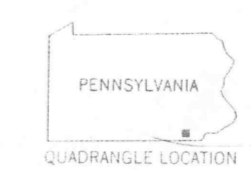
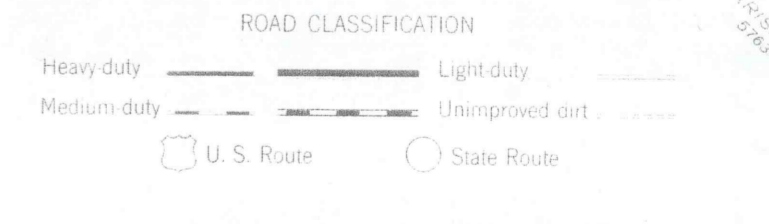
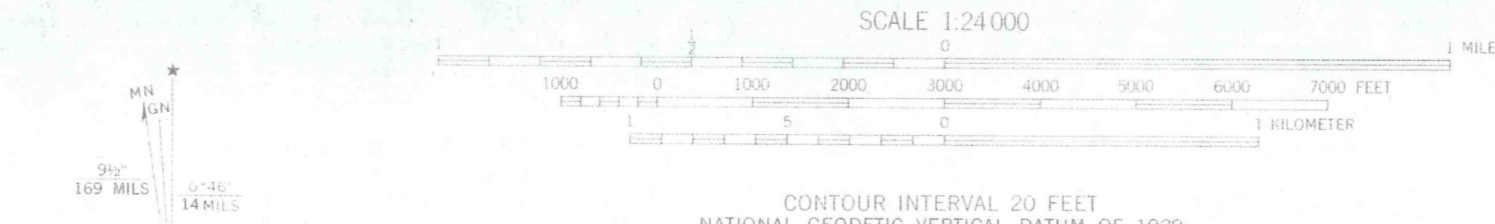
UNITED STATES
DEPARTMENT OF THE INTERIOR
GEOLOGICAL SURVEY

EXPLANATION

- A = Alluvium**
Material underlies narrow to broad, flat-surfaced floodplains of perennial streams. Comprises stratified sand, silt, and clay in upper part; same plus gravel in lower part. Generally less than 10 feet thick.
- C = Colluvium**
Colluvium is unsorted and unstratified to crudely stratified debris derived from underlying bedrock. Comprises fragments set in finer-grained matrix. Play fragments in schist bedrock areas (RC). Mapped where greater than 6 feet thick.
- AC = Alluvium and colluvium undivided**
Alluvium and colluvium are mapped together where the valley in which they occur is too narrow to map the units separately at 1:24,000 scale.
- RC = Schist bedrock and colluvium undivided**
Surfaces with low to steep slopes underlain by unweathered or weathered schist bedrock and thin (<6 feet), discontinuous deposits of colluvium.
- S = Saprolite**
Upland surface underlain by isovolumetrically weathered, untransported bedrock that retains its original character but has lost up to half its original bulk density.
- RU = Rock upland**
Nearly flat upland surface underlain usually by weathered schist bedrock, sometimes by unweathered schist bedrock. Little or no colluvium is present.
- = Outcrop**
Areas with continuous or discontinuous bedrock outcrop.



Mapped, edited, and published by the Geological Survey
Control by USGS, USCGS, USCE, and USSCS
Topography from aerial photographs by photogrammetric methods. Aerial photographs taken 1953. Field check 1955
Polyconic projection. 1927 North American datum
10,000-foot grid based on Pennsylvania coordinate system, south zone
1000-meter Universal Transverse Mercator grid ticks, zone 18, shown in blue
Revisions shown in purple compiled in cooperation with State of Pennsylvania agencies from aerial photographs taken 1969 and 1976.
This information not field checked



WAKEFIELD, PA.
N 3945—W 7607.5/7.5

THIS MAP COMPLIES WITH NATIONAL MAP ACCURACY STANDARDS FOR SALE BY U.S. GEOLOGICAL SURVEY, RESTON, VIRGINIA 22092
A FOLDER DESCRIBING TOPOGRAPHIC MAPS AND SYMBOLS IS AVAILABLE ON REQUEST

**ADDITIONAL COPIES OF THIS REPORT CAN BE OBTAINED FROM:
PENNSYLVANIA GEOLOGICAL SURVEY
P. O. BOX 8453
HARRISBURG, PA 17105-8453**

1955
PHOTOREPRODUCED AND 1976
AMS 5765 1 SW—SERIES V831