

8000-N

6000-N

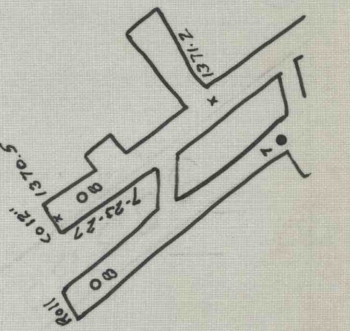
5000-N

4000-N

G. HARPER.

**THE WILLIAMS' RUN COAL CO.,  
MINE NO. 5.**

YOUNG & PERRY TOWNSHIP, JEFF. CO., PA.  
DEC-1922 Scale-1"=100'  
The H.M. Kanarr Co. Engrs.  
Punxsutawney, Pa.



3000-N  
1-0-9  
Sheet 1

8000-N

8000-N