

REED SMITH

DOBSON

YEAGER

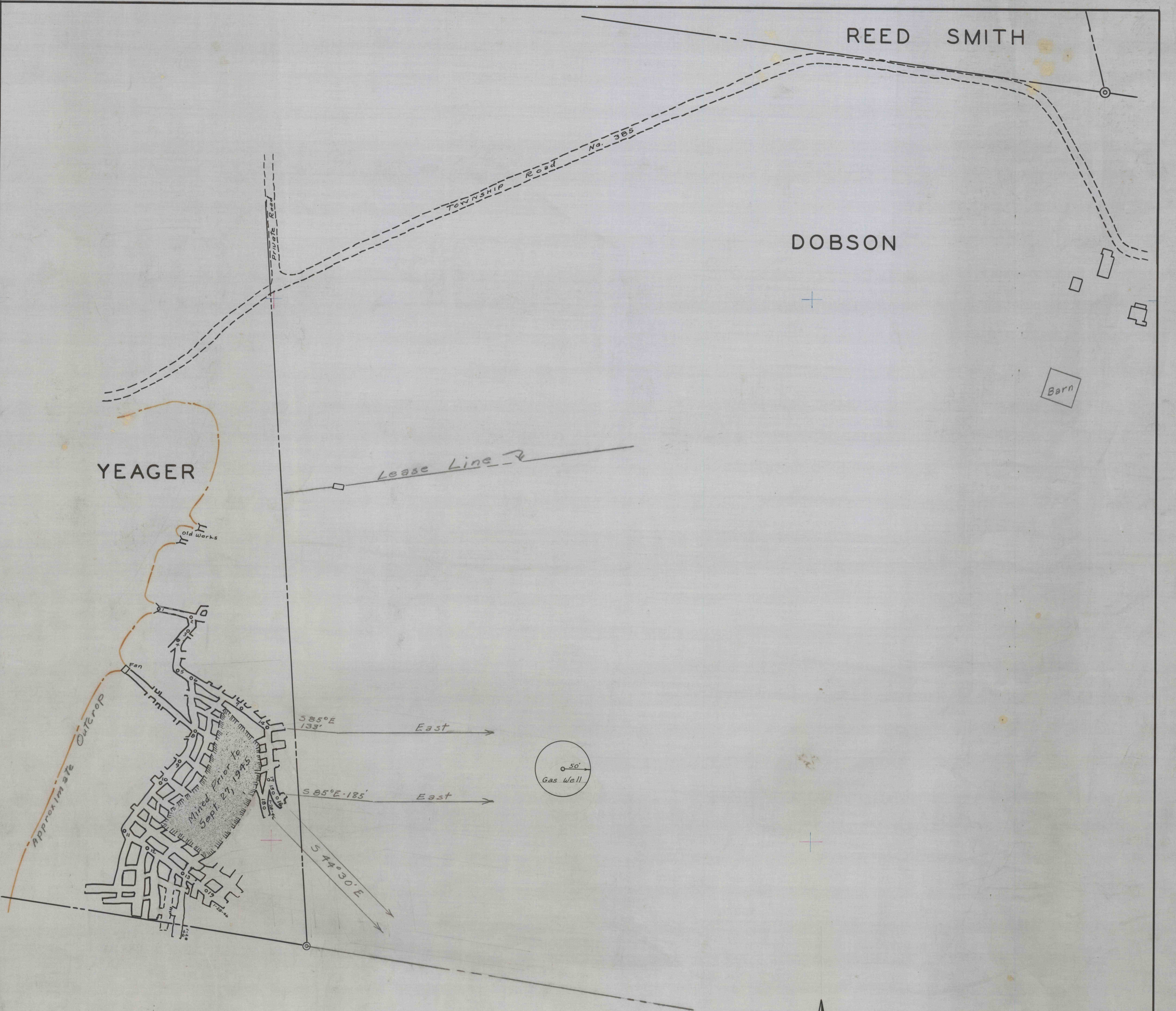
MAURER

MINE MAP DOBSON COAL CO., MINE

OLIVER TOWNSHIP, JEFFERSON COUNTY, PA.,

SCALE 1 IN. = 100 FT. OCT., 1945

WALTER J. ZIMMERMAN SURVEYOR,
PUNXSUTAWNEY, PA.



Barn

old works

Fan

Mixed Parcel to
Sept. 27, 1945

50'
Gas Well

East

East

S85°E-133'

S85°E-185'

S47°30'E

Approximate
Outcrop

Lease Line

TOWNSHIP
Road No. 305

Private Road