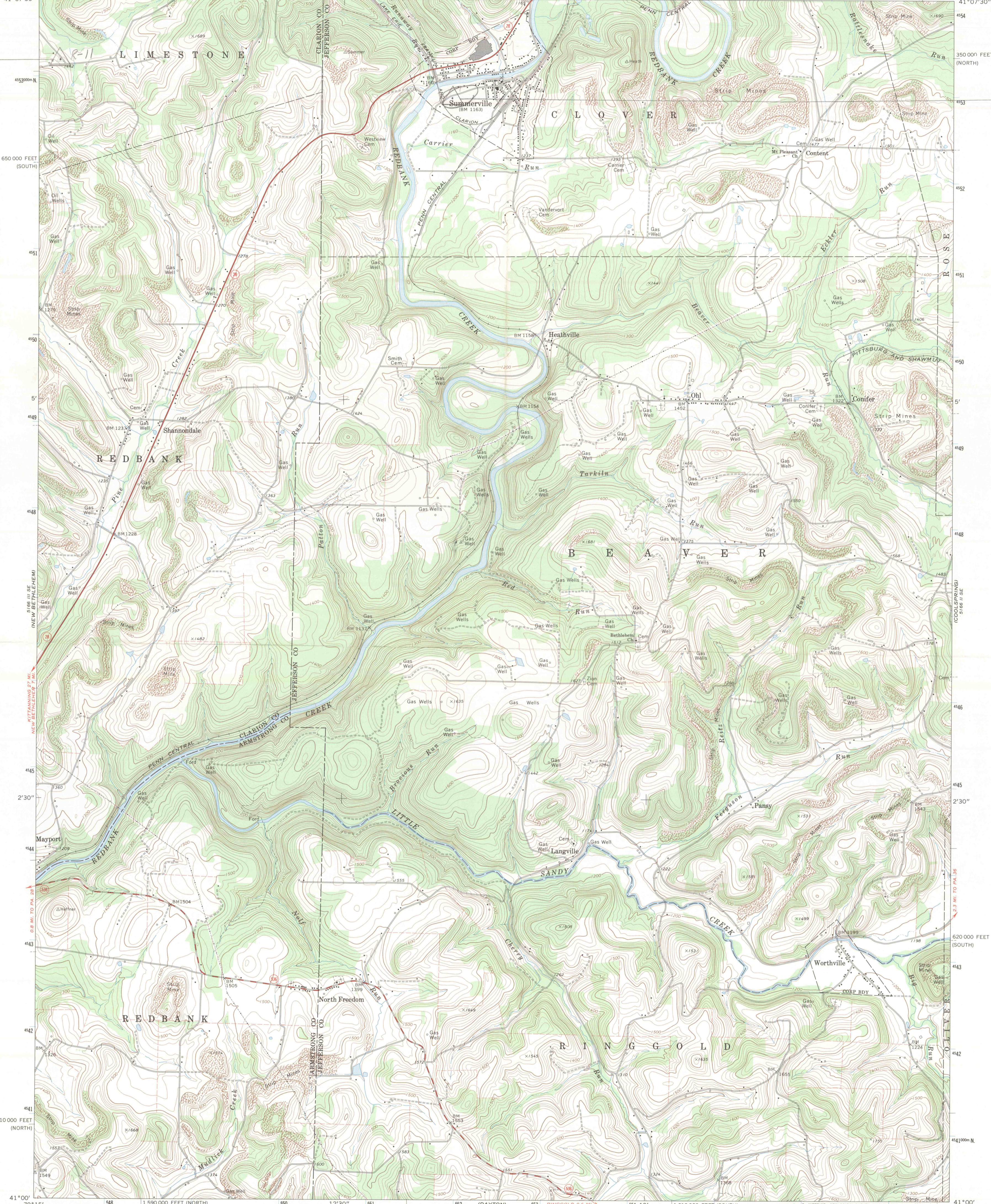
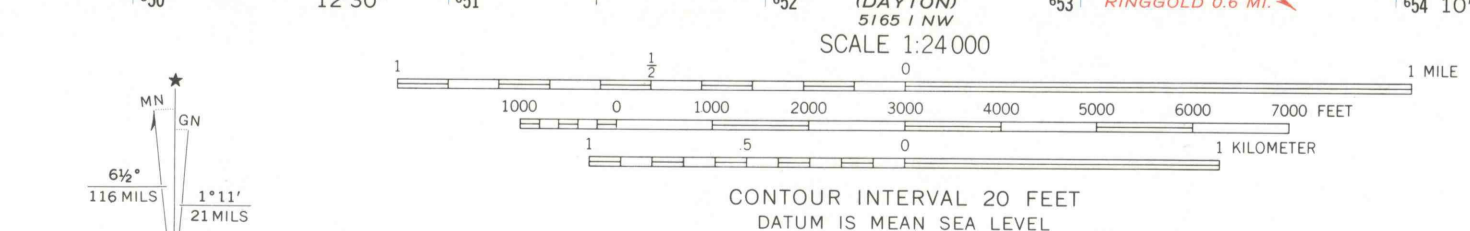


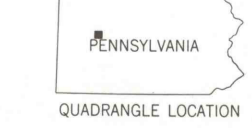
79°15' 1 590 000 FEET (SOUTH) 480000 E 49 12'30" 51 5166 11 NW (CORSICA) 10' 54 1 620 000 FEET (NORTH) 79°07'30" 41°07'30"



Mapped, edited, and published by the Geological Survey
Control by USGS and USC&GS
Topography by photogrammetric methods from aerial photographs taken 1967. Field checked 1969
Polyconic projection. 1927 North American datum
10,000-foot grids based on Pennsylvania coordinate system, north and south zones
1000-meter Universal Transverse Mercator grid ticks, zone 17, shown in blue
Fine red dashed lines indicate selected fence and field lines where generally visible on aerial photographs. This information is unchecked



ROAD CLASSIFICATION
Primary highway, hard surface ——— Light-duty road, hard or improved surface ———
Secondary highway, hard surface ——— Unimproved road ———
○ Interstate Route ○ U. S. Route ○ State Route



THIS MAP COMPLIES WITH NATIONAL MAP ACCURACY STANDARDS
FOR SALE BY U. S. GEOLOGICAL SURVEY, WASHINGTON, D. C. 20242
A FOLDER DESCRIBING TOPOGRAPHIC MAPS AND SYMBOLS IS AVAILABLE ON REQUEST

SUMMERVILLE, PA.
SW/4 BROOKVILLE 15' QUADRANGLE
N4100—W7907.5/7.5
1969
AMS 5166 II SW—SERIES V831