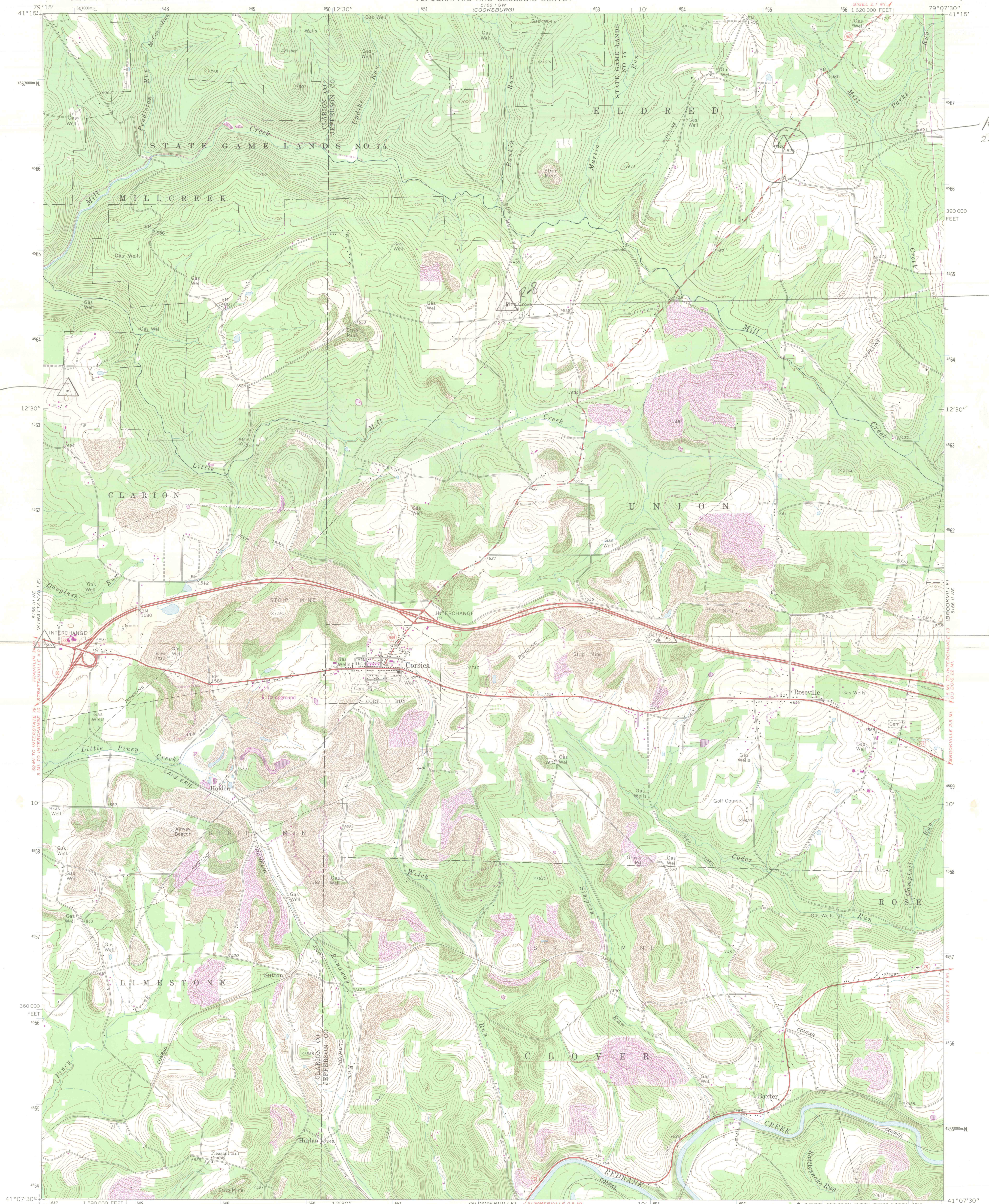


R5
R8
R9



R9

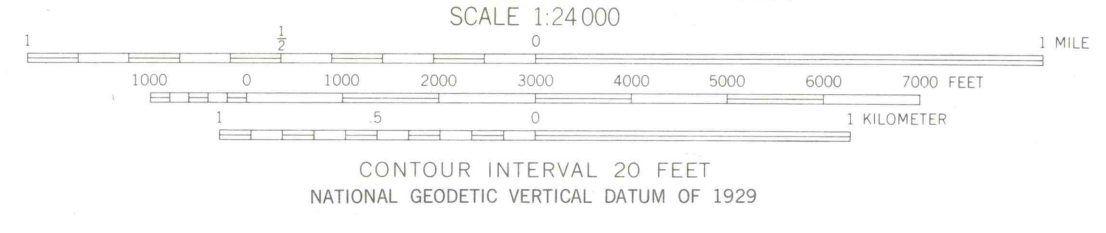
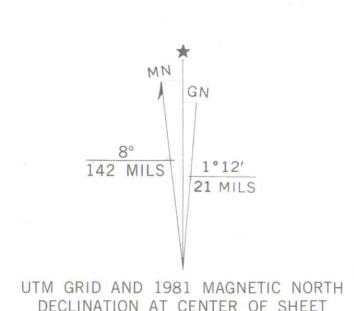
R5
259 CMP

R8

R16
SHUTE

R7

Mapped, edited, and published by the Geological Survey
Control by USGS and NOS/NOAA
Topography by photogrammetric methods from aerial
photographs taken 1967. Field checked 1969
Polyconic projection 10,000-foot grid ticks based on Pennsylvania
coordinate system, north zone. 1000-meter Universal Transverse
Mercator grid ticks, zone 17, shown in blue. 1927 North American
Datum. To place on the predicted North American Datum 1983
move the projection lines 3 meters south and 20 meters west
as shown by dashed corner ticks
Fine red dashed lines indicate selected fence and field lines where
generally visible on aerial photographs. This information is unchecked
There may be private inholdings within the boundaries
of the National or State reservations shown on this map
Revisions shown in purple and woodland compiled in cooperation with
Commonwealth of Pennsylvania agencies from aerial photographs taken 1977
and other sources. This information not field checked. Map edited 1981



ROAD CLASSIFICATION	
Primary highway, hard surface	Light-duty road, hard or improved surface
Secondary highway, hard surface	Unimproved road
Interstate Route	U. S. Route
	State Route

CORSICA, PA.
N4107.5—W7907.5/7.5
1969
PHOTOREVISED 1981
DMA 5166 II NW-SERIES V831

R5
R7
R8
R9
R16