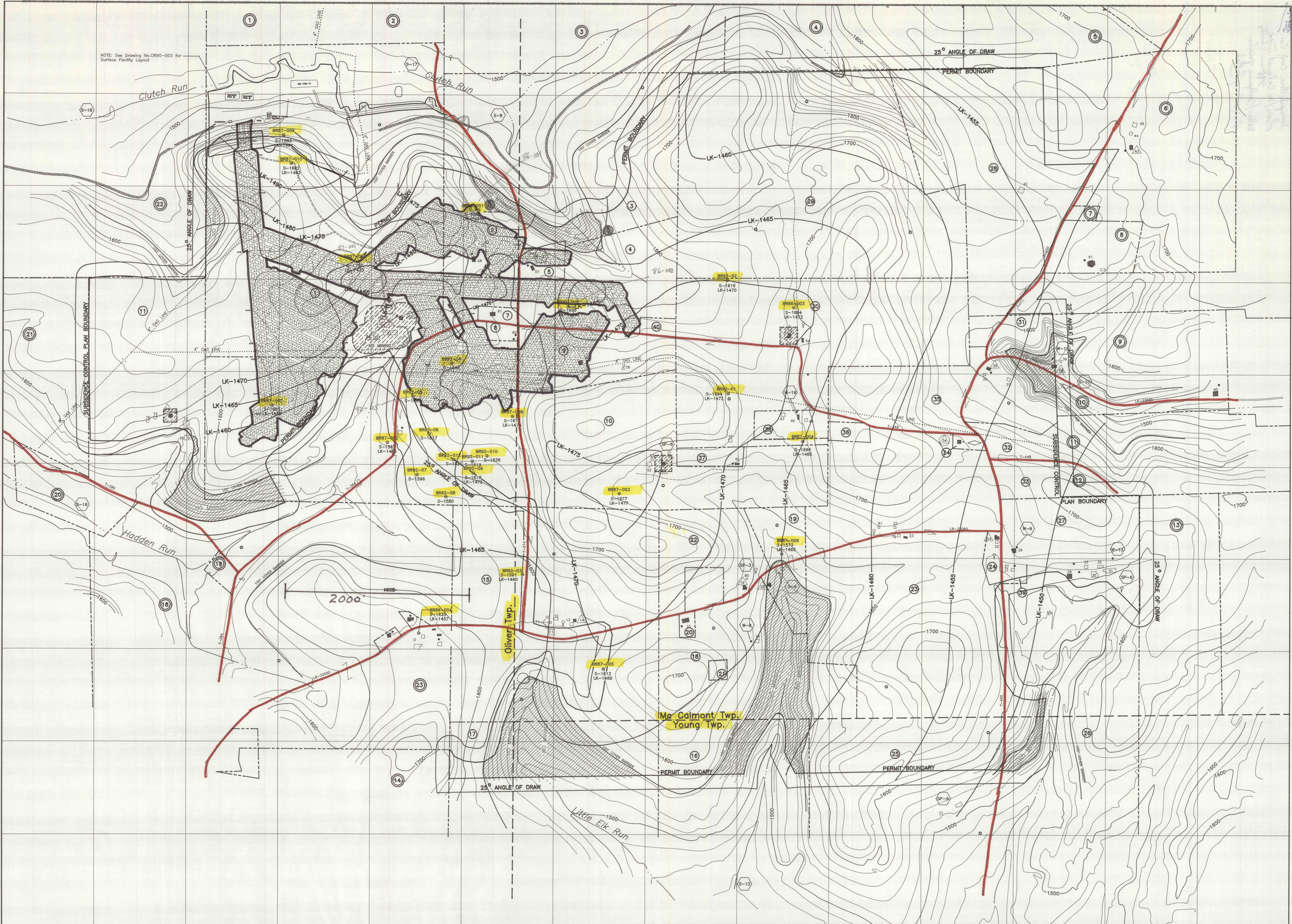


NOTE: See Drawing No. CR90-003 for Surface Facility Layout



**LEGEND**

- □ □ ■ PERMIT AREA
- □ ■ DWELLING, STRUCTURE
- □ ■ PRE-66 DWELLING
- □ ■ PUBLIC BUILDING
- LK-1480 — LOWER KITTANNING COAL CONTOUR
- LK-1480 — LOWER KITTANNING COAL CROPLINE
- ..... LIMIT OF AFFECTED SURFACE AREA
- DRILL HOLE
- WATER WELL
- SPRING
- MINE PORTAL
- MONITORING POINTS
- BACKGROUND MONITORING POINTS
- 1700 — SURFACE CONTOURS

Note: The shading indicates a barrier area where no mining is to take place. The 100' cover barrier is a movable barrier line. Its present location was established by the elevation of the coal contours indicating the bottom elevation of the Lower Kittanning coal. Their actual locations will be established by surveyed coal elevations in the mine.

*Oliver/McCalmont Infr.  
Jeff. County  
Valley & Cool Spring roads,  
platted*

TOWNSHIP	MINING ACRES	BARRIER ACRES	TOTAL PERMIT ACRES
Oliver	267.1	13.3	280.4
McCalmont	833.7	35.1	868.8
Young	49.7	22.5	72.2
	1150.5	70.9	1221.4

**Stanford**

Doverspike Bros. Coal Co.  
R.D. #4, Box 271, Punxsutawney, PA 15767

**CLUTCH RUN MINE**

Scale: 1" = 400'      Drawn By: M.A. Penny  
Date: May 16, 1994      Approved By:

**MODULE 19.2**