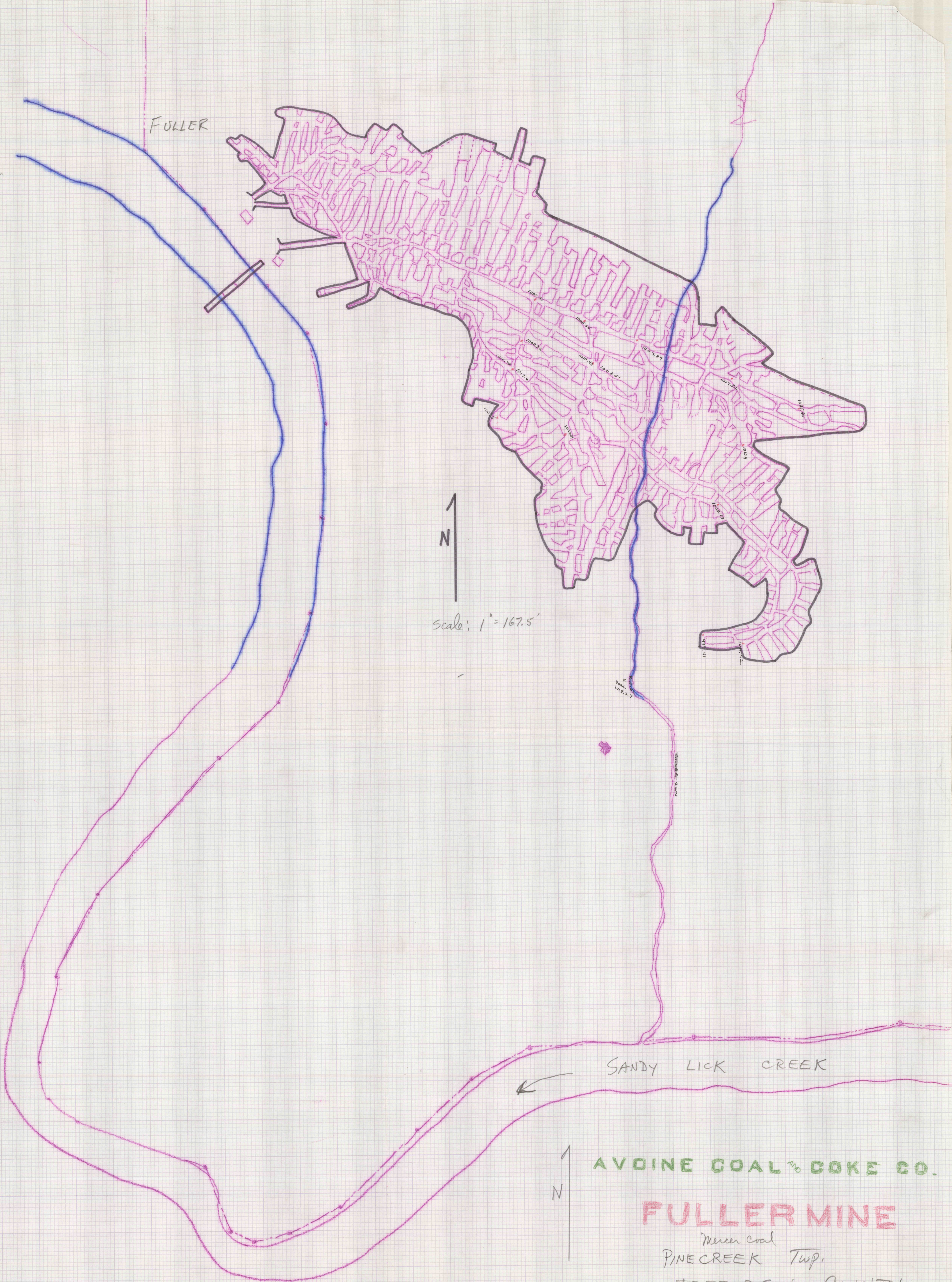


Fuller Run

FULLER



23" = 335'
1" = 167.5'

N
Scale: 1" = 167.5'

SANDY LICK CREEK

N
AVOINE COAL & COKE CO.
FULLER MINE
 Mercer coal
 PINECREEK Twp.
 JEFFERSON COUNTY

Respublican quad.
 plotted
 Saltspring map
 Jefferson map
 primary plat
 Mercer map
 Ligger mine
 Mercer map of 1870
 1872-1873