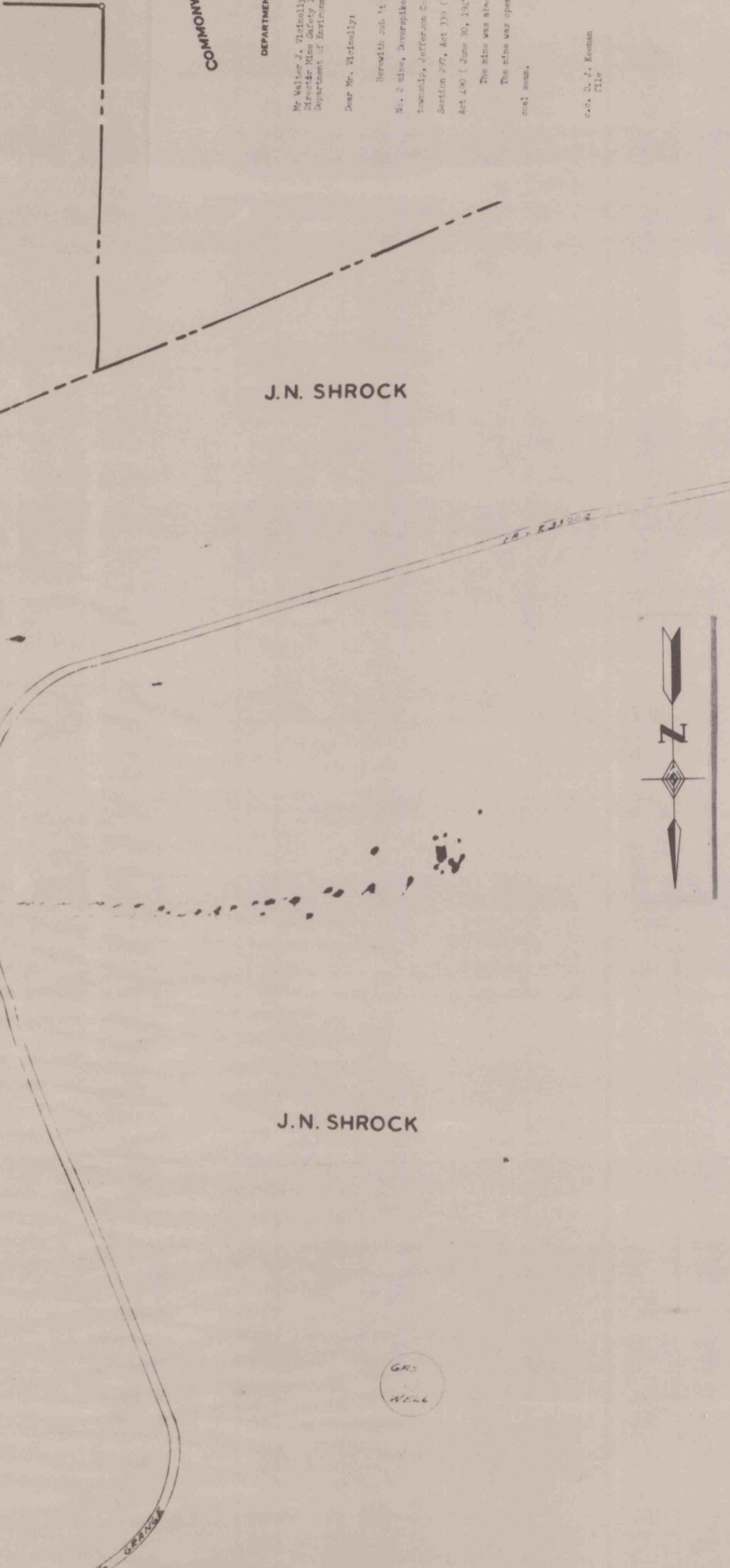




DEPARTMENT OF ENVIRONMENTAL RESOURCES
BUREAU OF MINING
PORTER TOWNSHIP, JEFFERSON COUNTY, PENNSYLVANIA

Approved by the Board of Environmental Protection, Act 101, Sec. 2, effective July 1, 1963. This plan was approved in October 1964.

Very truly yours,
Clyde E. Dinger
Director



L.W. DINGER

J.N. SHROCK

J.N. SHROCK

ELLIS BARNETT



- DATE OF SURVEY
- AUGUST 16, 1963
- SEPTEMBER 9, 1963
- MARCH 20, 1964
- JULY 16, 1964
- NOVEMBER 17, 1964
- JANUARY 12, 23, 26, 1965
- FEBRUARY 11, 1965
- APRIL 2, 7, 14, 21, 24, 30, 1965
- MAY 4, 14, 21, 26, 1965
- JUNE 7, 8, 9, 10, 12, 15, 18, 22, 25, 30
- JULY 14, 20, 24
- AUGUST 2, 4, 9, 13, 18, 28, 1965

Handwritten notes:
Doverspike Brothers Coal Co.
Porter Twp., Jefferson County
Doverspike Brothers

DOVERSPIKE BROTHERS COAL COMPANY

DORA No. 2 MINE
PORTER TOWNSHIP, JEFFERSON COUNTY, PENNA.
SCALE: 1"=100'

316663

"B" Lower Kittanning Seam