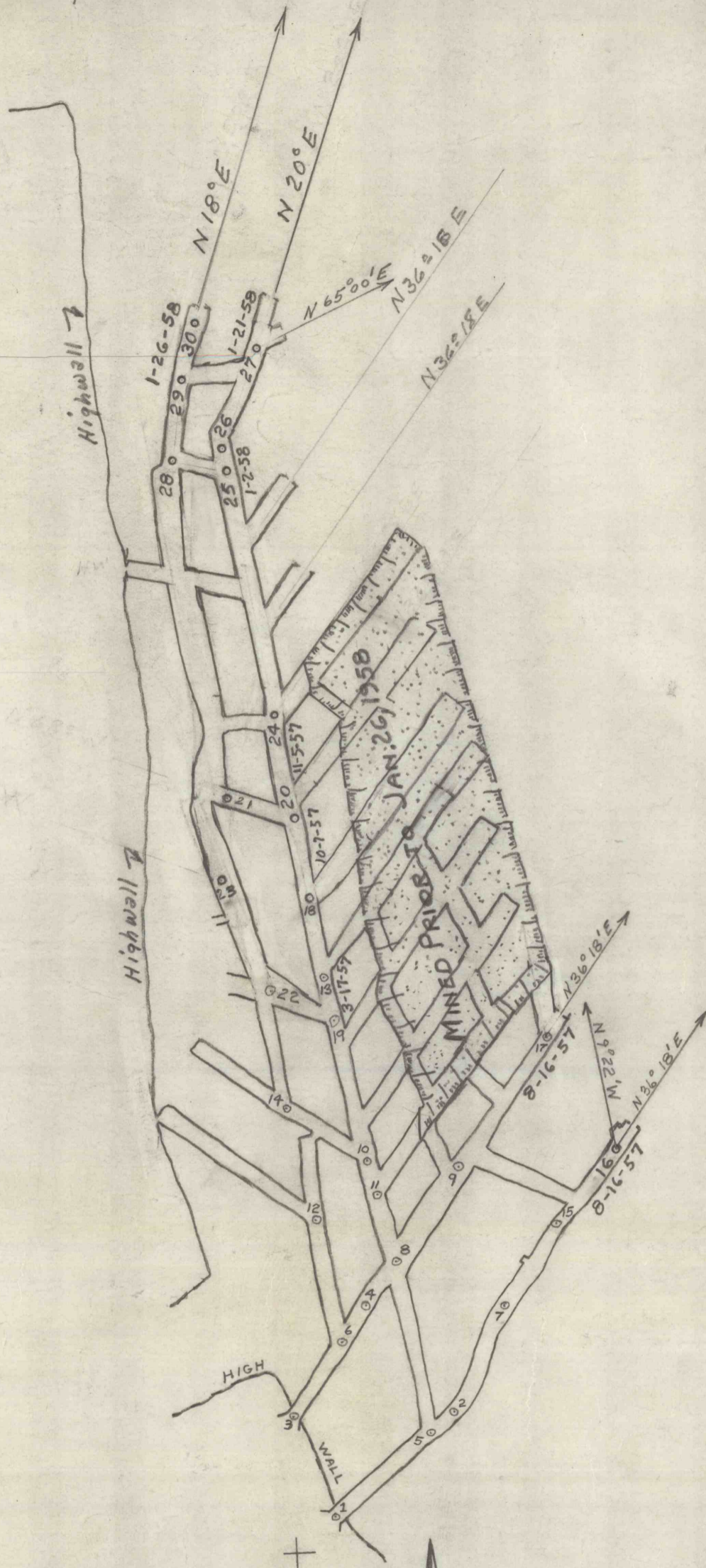


Property Line



2-D-19

2-D-19

MINE MAP  
 BARILAR COAL CO., INC.  
 MINE No. 1

YOUNG TOWNSHIP, JEFFERSON COUNTY, PA.  
 SCALE 1" = 100' AUGUST 20, 1957

WALTER J. ZIMMERMAN - SURVEYOR-ENGINEER - PUNXSUTAWNEY, PA.

2-D-19 found in Jeff. Co. map  
 found in Jeff. Co. map

251-101