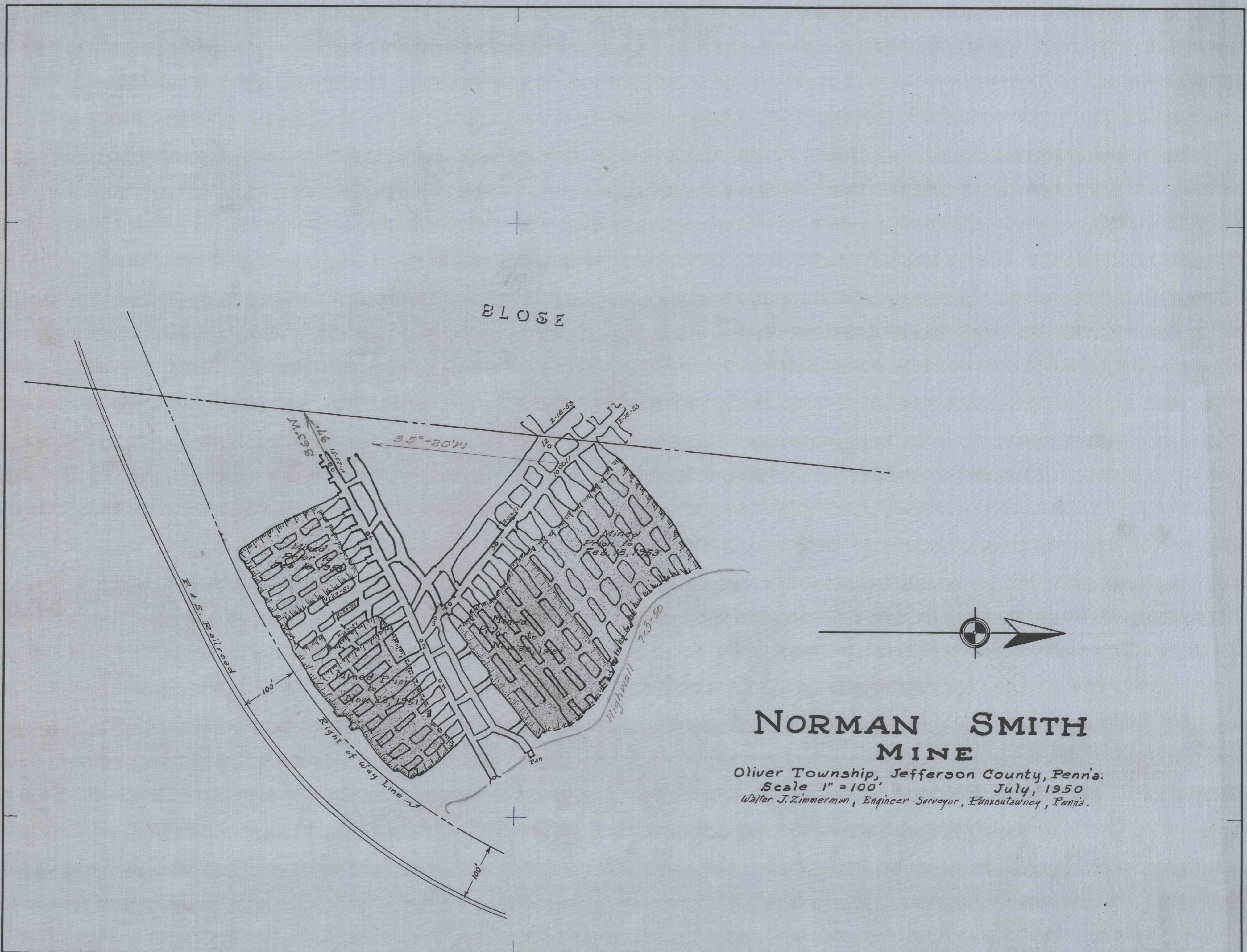


182-103  
182-103

1-B-80  
Oliver Twp. Jefferson County  
Norman Smith Mine

08-B-1



**NORMAN SMITH  
MINE**

Oliver Township, Jefferson County, Penna.  
 Scale 1" = 100' July, 1950  
 Walter J. Zimmerman, Engineer-Surveyor, PUNXSUTAWNEY, Penna.

1111