

1-B-152

X

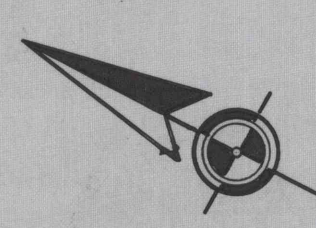
1-B-125

CROP

KNISLEY

J.J. STERRETT

MORRISON



MINE MAP

MORRISON COAL COMPANY

MINE No. 1

WASHINGTON TOWNSHIP, JEFFERSON COUNTY, PENN'A.

SCALE 1 INCH = 100 FEET

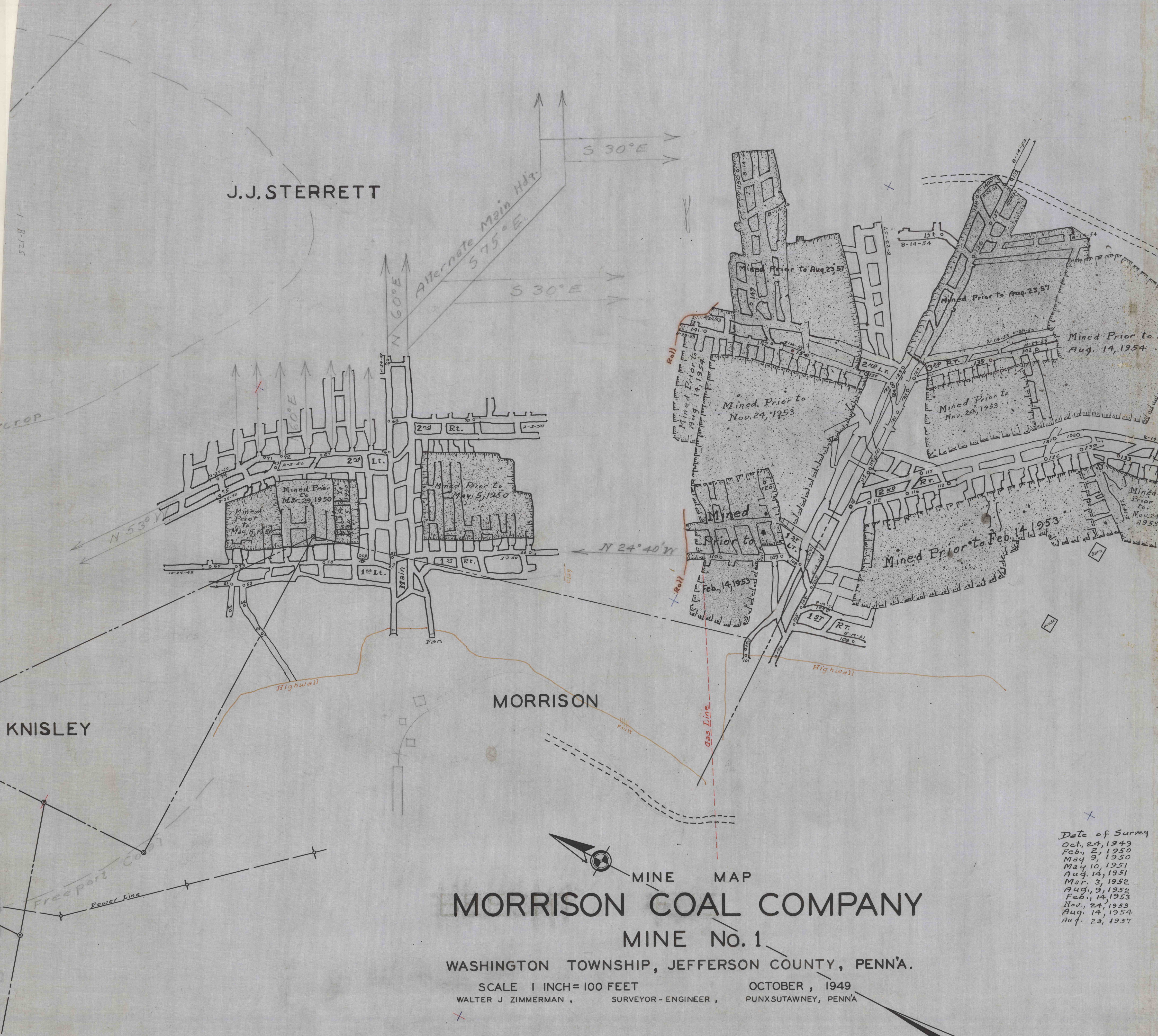
WALTER J. ZIMMERMAN, SURVEYOR - ENGINEER,

OCTOBER, 1949

PUNXSUTAWNEY, PENN'A.

Date of Survey

Oct. 24, 1949
Feb. 2, 1950
May 9, 1950
May 10, 1951
Aug. 14, 1951
Mar. 3, 1952
Aug. 9, 1952
Feb. 14, 1953
Nov. 24, 1953
Aug. 14, 1954
Aug. 23, 1954



Handwritten notes and signatures at the bottom right corner.