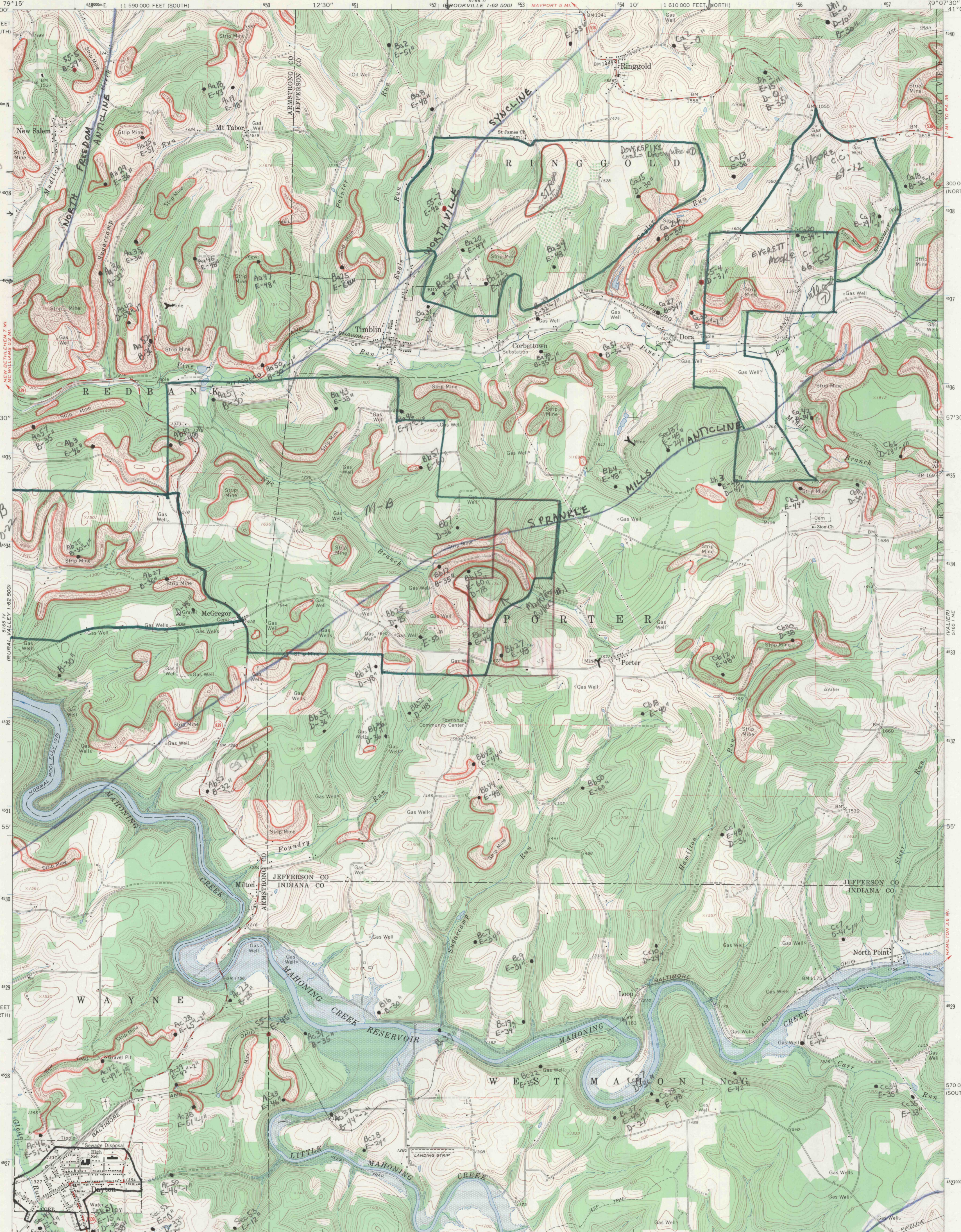


*East file 3/20/73
B-32-36
12494
Harrison
Coal Co.
part of
Rural #2
Mills
also
Harrison #1
part west of
McWilliam*



*for
MB-1, colorways
- United and
rest = Ringgold
Mills, etc.*

Mapped, edited, and published by the Geological Survey
Control by USGS and USC&GS
Topography by photogrammetric methods from aerial photographs taken 1967. Field checked 1968
Polyconic projection. 1927 North American datum
10,000-foot grids based on Pennsylvania coordinate system, north and south zones
1000-meter Universal Transverse Mercator grid ticks, zone 17, shown in blue
Fine red dashed lines indicate selected fence and field lines where generally visible on aerial photographs. This information is unchecked
Area covered by dashed light-blue pattern is subject to controlled inundation

SCALE 1:24,000
CONTOUR INTERVAL 20 FEET
DATUM IS MEAN SEA LEVEL

ROAD CLASSIFICATION
Secondary highway, all weather, Light-duty road, all weather, hard surface
Improved surface
Unimproved road, fair or dry weather
Slate Route

STRIPPED AREAS
STRUCTURE

DAYTON, PA.
NW/4 SMICKSBURG 15' QUADRANGLE
N4052.5-W7907.5/7.5
1968
AMS 5165 1 NW-SERIES B581

42