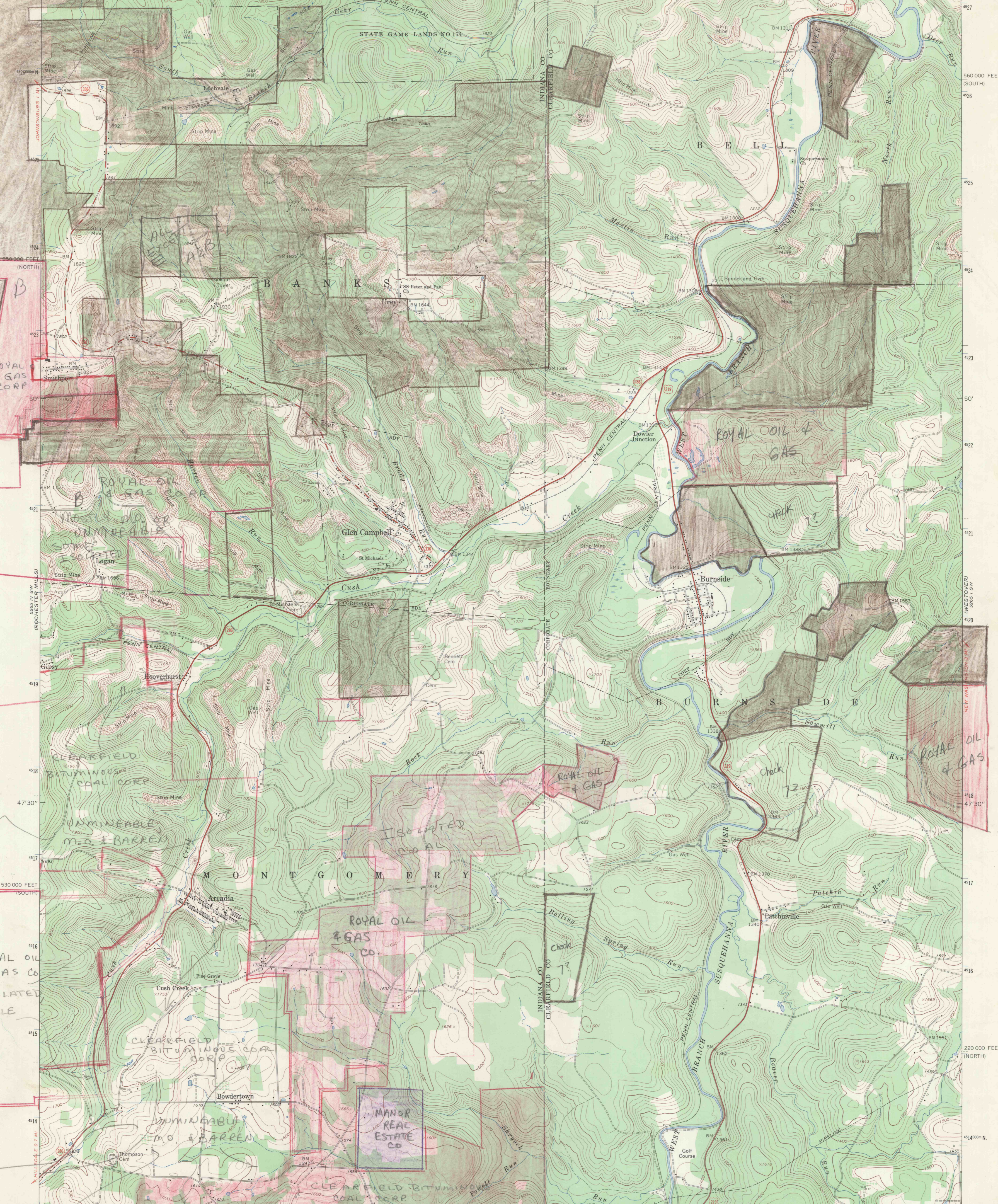


78°52'30" 1 630 000 FEET (NORTH) 1819000 E 182 50' 183 5265 IV NE 184 (MC GEES MILLS) 185 47'30" 187 13 MI. TO U.S. 322 MC GEES MILLS 2.8 MI 1 720 000 FEET (SOUTH) 78°45' 40°52'30"



Mapped, edited, and published by the Geological Survey

Control by USGS and USC&GS

Topography by photogrammetric methods from aerial photographs taken 1967. Field checked 1968

Polyconic projection. 1927 North American datum

10,000-foot grids based on Pennsylvania coordinate system, south and north zones

1000-meter Universal Transverse Mercator grid ticks, zone 17, shown in blue

Fine red dashed lines indicate selected fence and field lines where generally visible on aerial photographs. This information is unchecked

UTM GRID AND 1968 MAGNETIC NORTH DECLINATION AT CENTER OF SHEET

THIS MAP COMPLIES WITH NATIONAL MAP ACCURACY STANDARDS FOR SALE BY U.S. GEOLOGICAL SURVEY, WASHINGTON, D. C. 20242 A FOLDER DESCRIBING TOPOGRAPHIC MAPS AND SYMBOLS IS AVAILABLE ON REQUEST

SCALE 1:24 000

CONTOUR INTERVAL 20 FEET DATUM IS MEAN SEA LEVEL

ROAD CLASSIFICATION

Primary highway, all weather, hard surface

Secondary highway, all weather, hard surface

Light-duty road, all weather, improved surface

Unimproved road, fair or dry weather

U. S. Route State Route

BURNSIDE, PA.

SE/4 PUNXSUTAWNEY 15' QUADRANGLE N4045-W7845/7.5

1968

AMS 5265 IV SE-SERIES V831

51