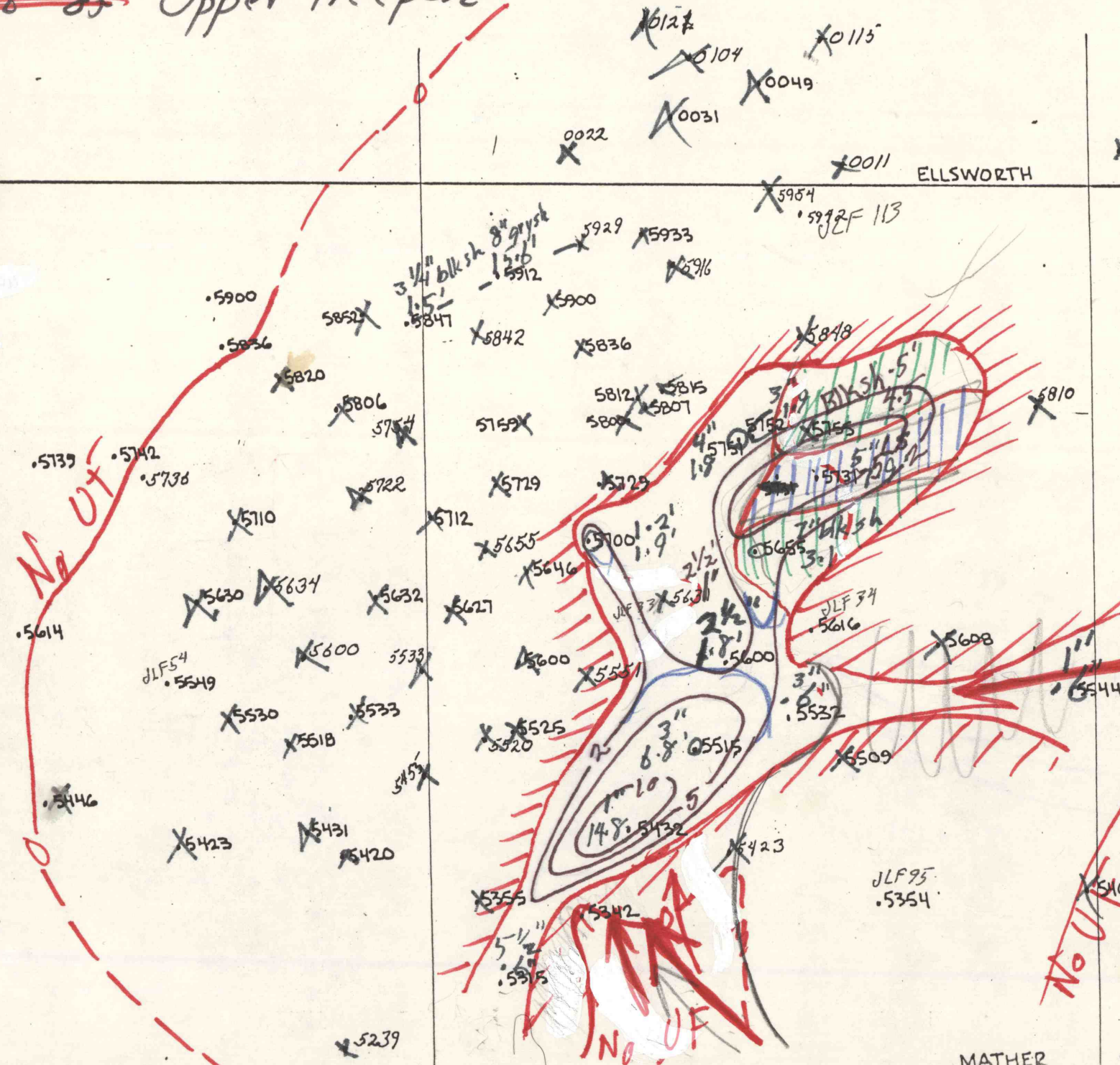


Fig. 9. Distribution of upper local coal above the split of Upper Freeport

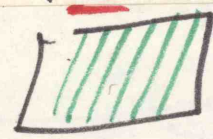


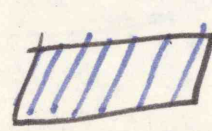
Scale
1:90000
10000 ft.

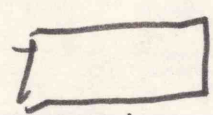
3" thickness of coal
6.8' Data point distance above main Upper Freeport coal


The probable paths of sediment input for the rock between the Upper Freeport and overlying coal

The coal grades into shale and limestone laterally, shown by:

 Black Shale

 Limestone

 Coal

Upper split absent  upper split present