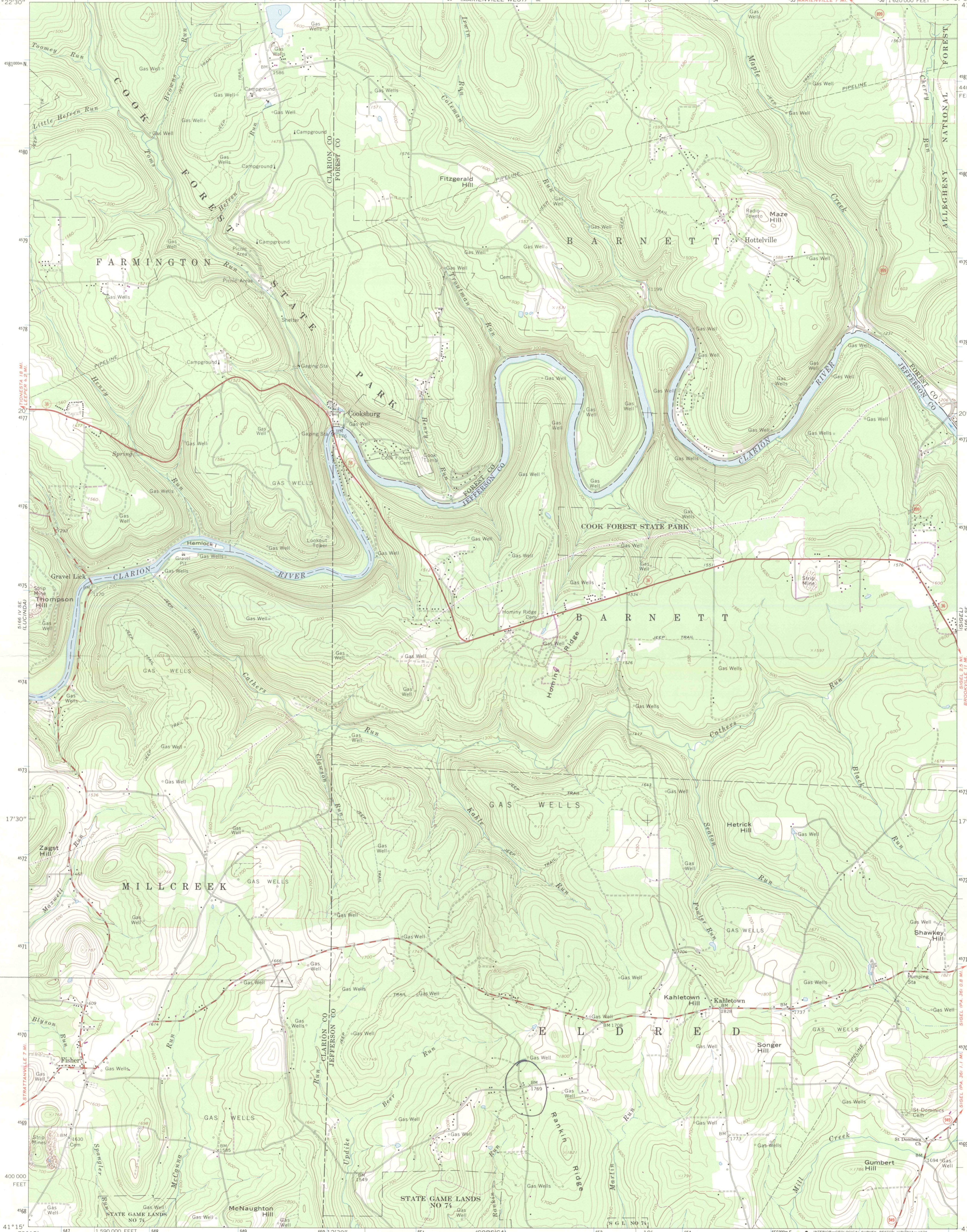


79°15' 647000 E 48 49 12'30" 50 51 (MARIENVILLE WEST) 52 53 10' 54 55 (MARIENVILLE 7 MI) 56 1 620 000 FEET 79°07'30" 41°22'30"



Mapped, edited, and published by the Geological Survey

Control by USGS and USC&GS

Topography by photogrammetric methods from aerial photographs taken 1967 and 1968. Field checked 1967

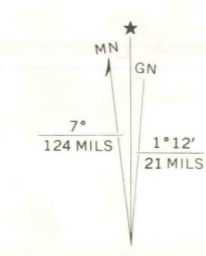
Polyconic projection. 1927 North American datum

10,000-foot grid based on Pennsylvania coordinate system, north zone

1000-metre Universal Transverse Mercator grid ticks, zone 17, shown in blue

Fine red dashed lines indicate selected fence and field lines where generally visible on aerial photographs. This information is unchecked

Revisions shown in purple compiled in cooperation with State of Pennsylvania agencies from aerial photographs taken 1973. This information not field checked

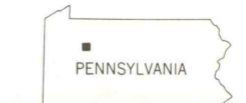


CORSICA 5166 11 NW SCALE 1:24 000

1 0000 0 1000 2000 3000 4000 5000 6000 7000 FEET

1 1 2 3 4 5 6 7 KILOMETRE

CONTOUR INTERVAL 20 FEET NATIONAL GEODETIC VERTICAL DATUM OF 1929



ROAD CLASSIFICATION  
Primary highway, all weather, hard surface  
Secondary highway, all weather, hard surface  
Light-duty road, all weather, improved surface  
Unimproved road, fair or dry weather  
State Route

COOKSBURG, PA.

N4115-W7907.5/7.5

1967

PHOTOREVISED 1973  
AMS 5166 1 SW-SERIES V831

THIS MAP COMPLIES WITH NATIONAL MAP ACCURACY STANDARDS  
FOR SALE BY U. S. GEOLOGICAL SURVEY, RESTON, VIRGINIA 22092  
A FOLDER DESCRIBING TOPOGRAPHIC MAPS AND SYMBOLS IS AVAILABLE ON REQUEST