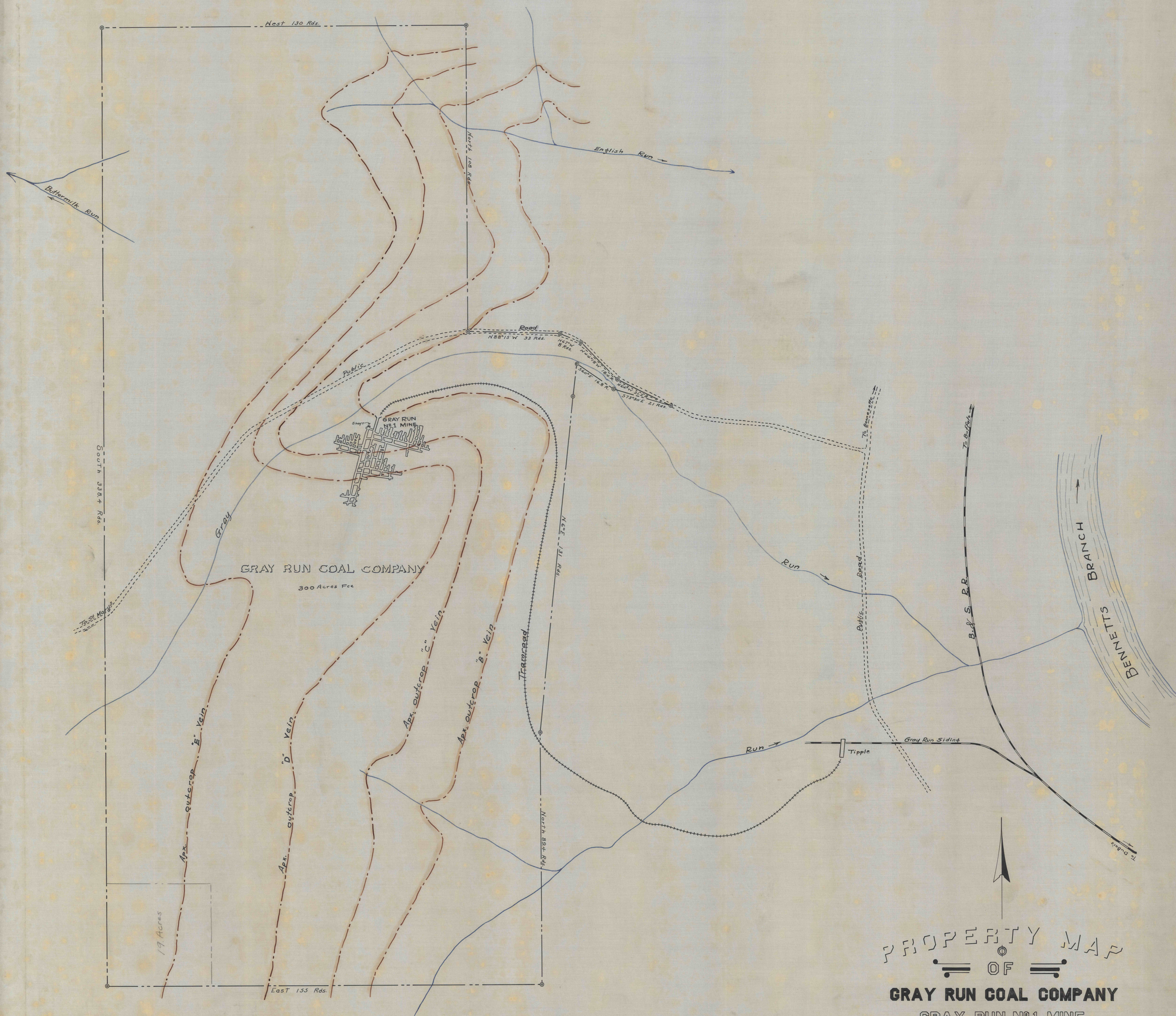


M'GULLOUGH



JULIUS JONES

PROPERTY MAP
 OF
 GRAY RUN COAL COMPANY
 GRAY RUN No. 1 MINE
 BENNEZETTE, ELK COUNTY, PENNA.
 Scale 1"=300', June 2, 1927

The H.M. Kanarr Co.
 Mining Engineers
 Pottsville, Pa.

Note: This map compiled from other maps, not from actual survey