

SINKHOLES AND KARST-RELATED FEATURES OF DAUPHIN COUNTY, PENNSYLVANIA

by W.E.Kochanov

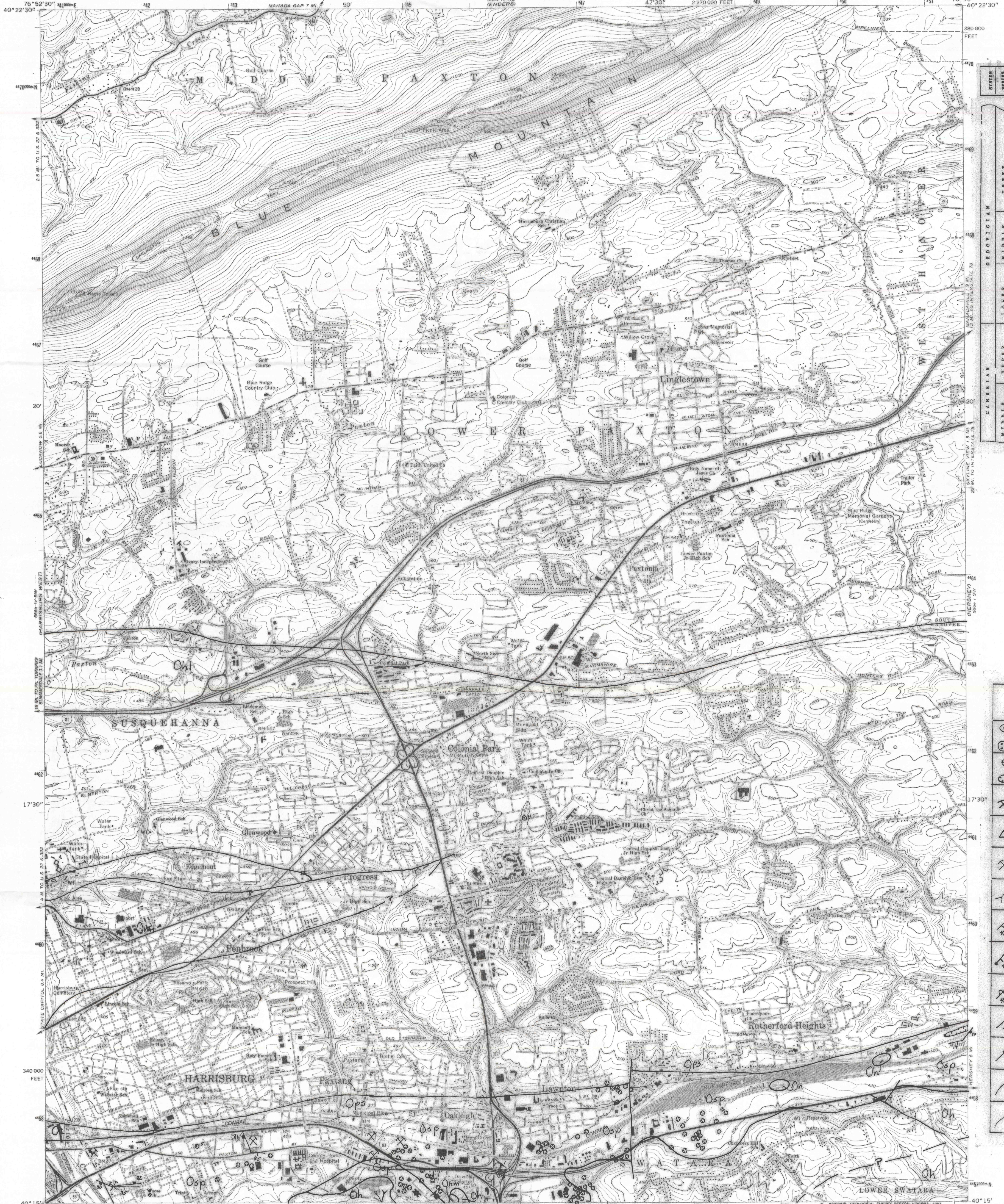
OPEN-FILE REPORT: 8901

0642

HARRISBURG EAST QUADRANGLE
PENNSYLVANIA-DAUPHIN CO.
7.5 MINUTE SERIES (TOPOGRAPHIC)
SE 1/4 HARRISBURG 15' QUADRANGLE

UNITED STATES
DEPARTMENT OF THE INTERIOR
GEOLOGICAL SURVEY

1989
COMMONWEALTH OF PENNSYLVANIA
DEPARTMENT OF ENVIRONMENTAL RESOURCES
TOPOGRAPHIC AND GEOLOGIC SURVEY



SYMBOL	FORMATION
	Chambersburg Formation Oe
	Hersey Formation Oh
	Hersey Formation Oh
	Hersey Formation Oh
	Hersey Formation Oh
	St. Paul Group Op
	Anville Formation On
	Pineburg Station Formation Opa
	Epler Formation Oe
	Rickenbach Formation Or
	Stonehenge Formation Os
	Richland Formation Or
	Milbach Formation Om
	Schaeferstown Formation Os
	Snitz Creek Formation Oac
	Buffalo Springs Formation Oba

SYMBOLS	
	individual sinkhole or sinkhole group
	closed depressions
	surface mine, iron
	surface mine limestone/dolomite
	surface mine type unknown
	cave entrance
	bedding orientation strike and dip
	approximate strike and dip
	overturned, bed strike and dip
	joint orientation strike and dip
	joint orientation strike and 90° dip
	fault contact
	formation contact

Mapped, edited, and published by the Geological Survey

Control by USGS and USC&GS

Topography by photogrammetric methods from aerial photographs taken 1968. Field checked 1969

Supersedes Army Map Service map dated 1947

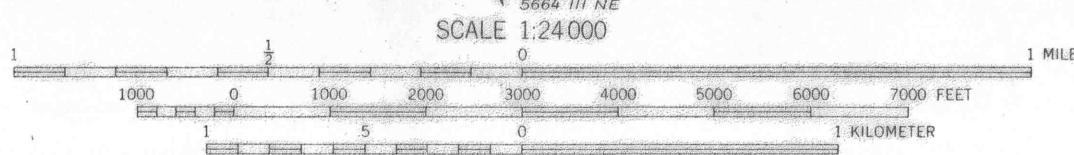
Polyconic projection. 1927 North American datum 10,000-foot grid based on Pennsylvania coordinate system, south zone

1000-meter Universal Transverse Mercator grid ticks, zone 18, shown in blue

To place on the predicted North American Datum 1983, move the projection lines 6 meters south and 27 meters west as shown by dashed corner ticks

There may be private inholdings within the boundaries of the National or State reservations shown on this map

Red tint indicates areas in which only landmark buildings are shown



CONTOUR INTERVAL 20 FEET
NATIONAL GEODETIC VERTICAL DATUM OF 1929

THIS MAP COMPLIES WITH NATIONAL MAP ACCURACY STANDARDS
FOR SALE BY U.S. GEOLOGICAL SURVEY, DENVER, COLORADO 80225, OR RESTON, VIRGINIA 22092
A FOLDER DESCRIBING TOPOGRAPHIC MAPS AND SYMBOLS IS AVAILABLE ON REQUEST

ROAD CLASSIFICATION

Primary highway, hard surface
Secondary highway, hard surface
Light-duty road, hard or improved surface
Unimproved road

Interstate Route U.S. Route State Route

0642
HARRISBURG EAST, PA.
SE 1/4 HARRISBURG 15' QUADRANGLE
40076-C7-TF-024

Revisions shown in purple compiled in cooperation with Commonwealth of Pennsylvania agencies from aerial photographs taken 1983 and other source data. This information not field checked. Map edited 1987

1989
PHOTOREVISED 1987
DMA 8684 IV SE-SERIES V851

TOPOGRAPHIC & GEOLOGIC SURVEY
P. O. BOX 2357, EXECUTIVE HOUSE
HARRISBURG, PA 17120
Compiled by W.E.Kochanov
1988

The work presented here has not been reviewed for formal publication.

Bureau of Topographic and Geologic Survey
P. O. Box 8453, Harrisburg, PA 17105-8453