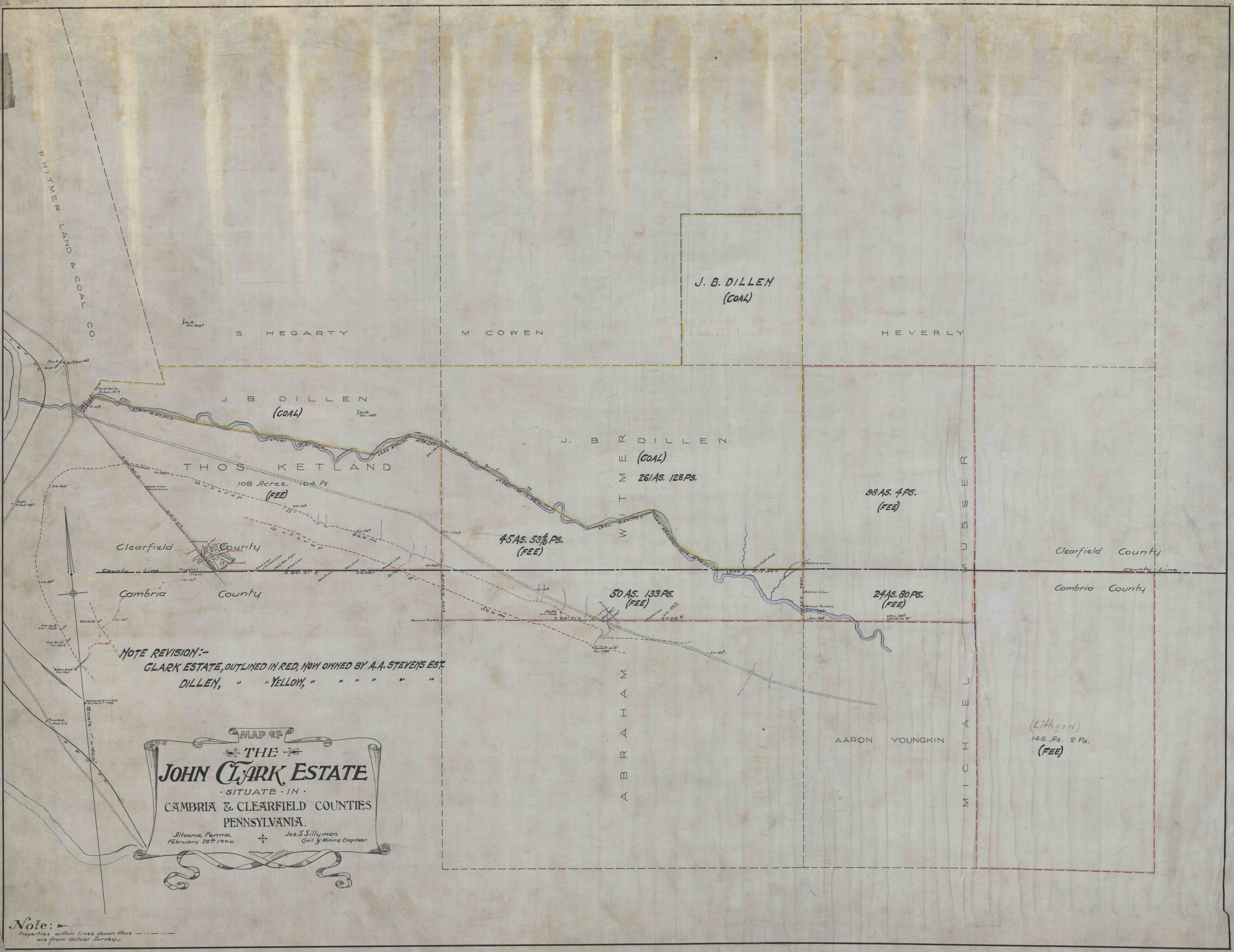


L/W

CRE-01

CRE-01



NOTE REVISION:-
 CLARK ESTATE, OUTLINED IN RED, NOW OWNED BY A.A. STEVEN'S EST.
 DILLEN, " " YELLOW, " " " " " " " " " "

MAP OF
THE JOHN CLARK ESTATE
 SITUATE IN
 CAMBRIA & CLEARFIELD COUNTIES
 PENNSYLVANIA.

Altoona, Penna.
 February 28th 1900

Jos. S. Sullyman,
 Civil & Mining Engineer.

Note: Properties within lines shown thus are from actual survey.

17