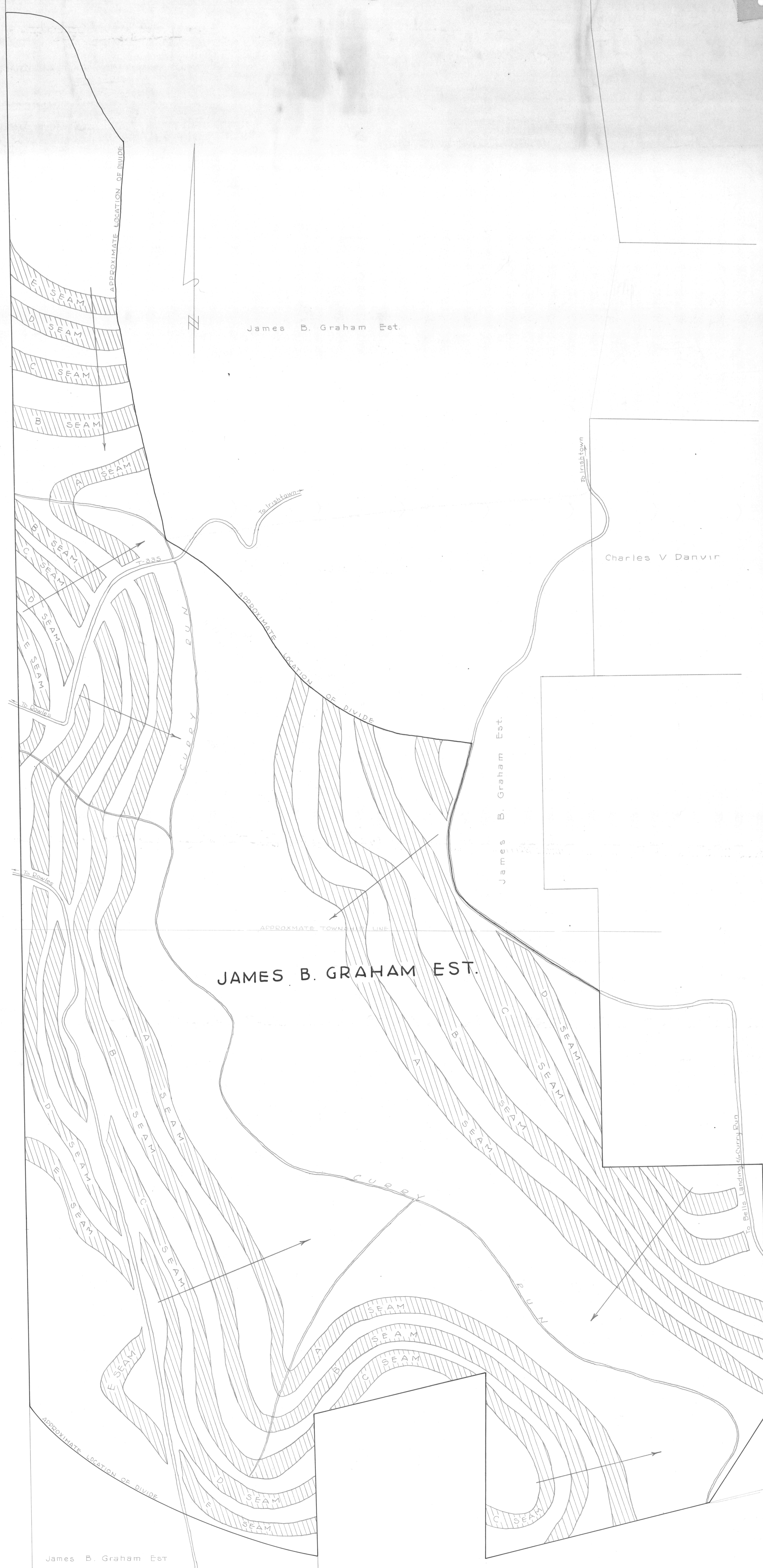


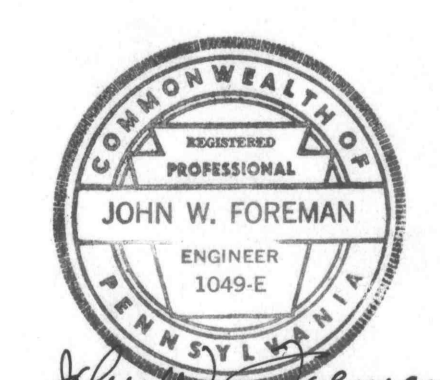
CEP W.P. 1960



JAMES B. GRAHAM EST.

PLAN SHOWING
 PROPOSED BITUMINOUS COAL STRIPPING OPERATION
 OF
C. E. POWELL COAL CO
 SITUATE IN
PENN & GREENWOOD TOWNSHIPS, CLEARFIELD CO., PA
 SCALE: 1" = 400' JUNE 22, 1960

JOHN W. FOREMAN, MINING ENGINEER
 LEWIS L. GWIN - CONSULTING ENGINEERS
 ALTOONA, PA.



CEP-1-4

CEP-1-4