

ASHLEY BRINK

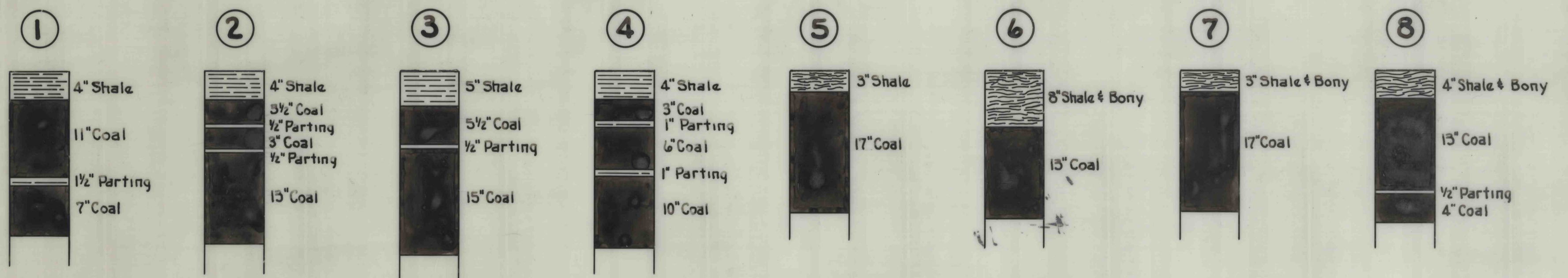
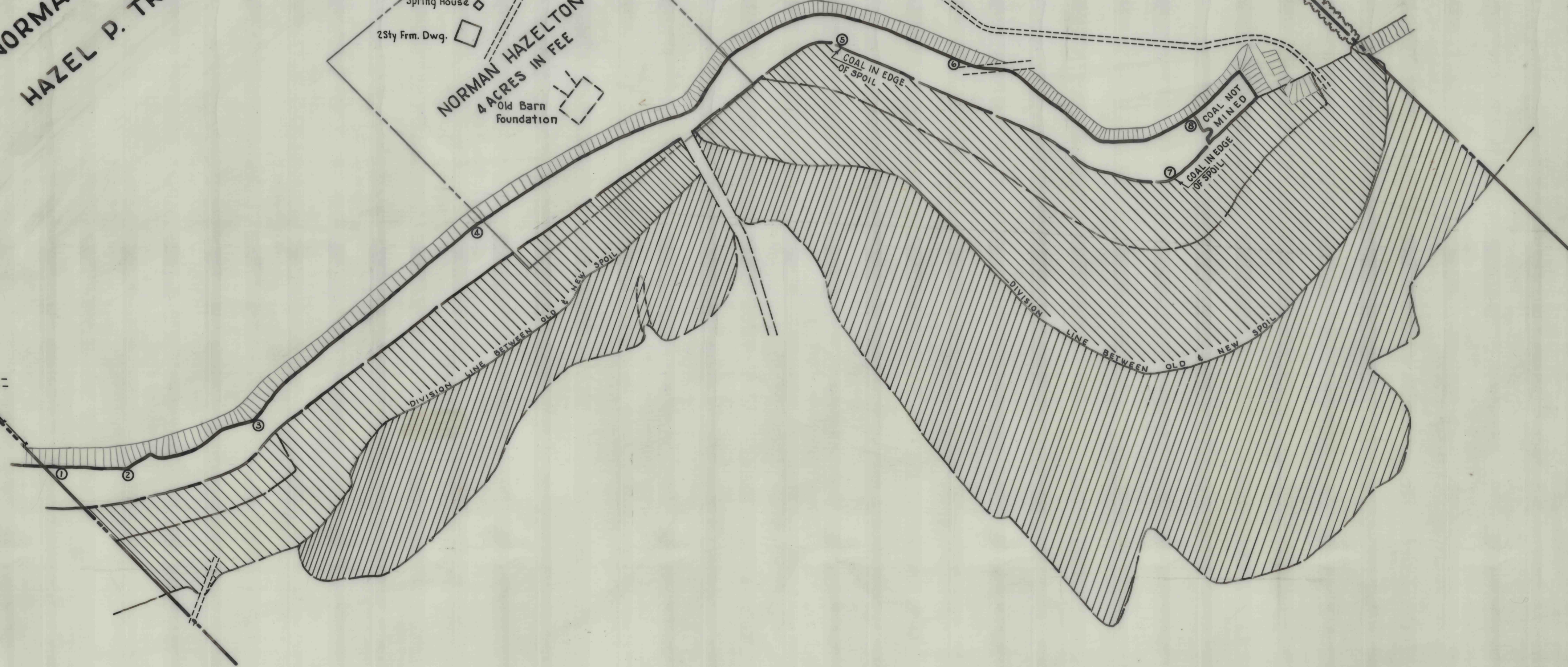
NORMAN HAZELTON - SURFACE  
HAZEL P. TROXELL - MINERALS



NOTE: Corner Has Both Yellow Painted & White Painted Witnesses  
Corner: Old Stake & Stones Also Witnessed Trees

Spring House  
2 1/2 Sty Frm. Dwg.  
NORMAN HAZELTON  
4 ACRES IN FEE  
Old Barn foundation

ASHLEY BRINK



COAL SECTIONS ALONG STRIP CUT  
SCALE: 1" = 1'-0"

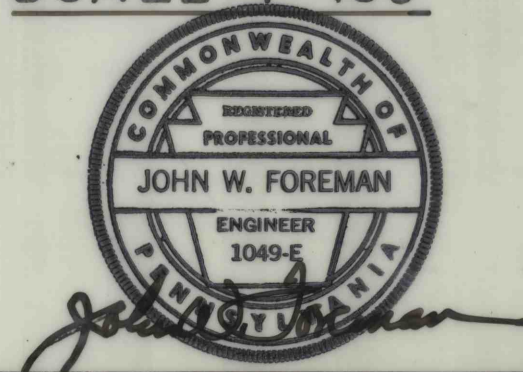
C. E. POWELL COAL CO.  
BITUMINOUS COAL STRIPPING OPERATIONS

ON  
NORMAN HAZELTON TRACT  
SITUATE IN

CHEST TWP., CLEARFIELD CO., PA.

SCALE: 1" = 100'

OCTOBER 19, 1961



JOHN W. FOREMAN, MINING ENGINEER  
LEWIS L. GWIN, CONSULTING ENGINEERS  
ALTOONA, PA.

CENS-1

CGN2-1