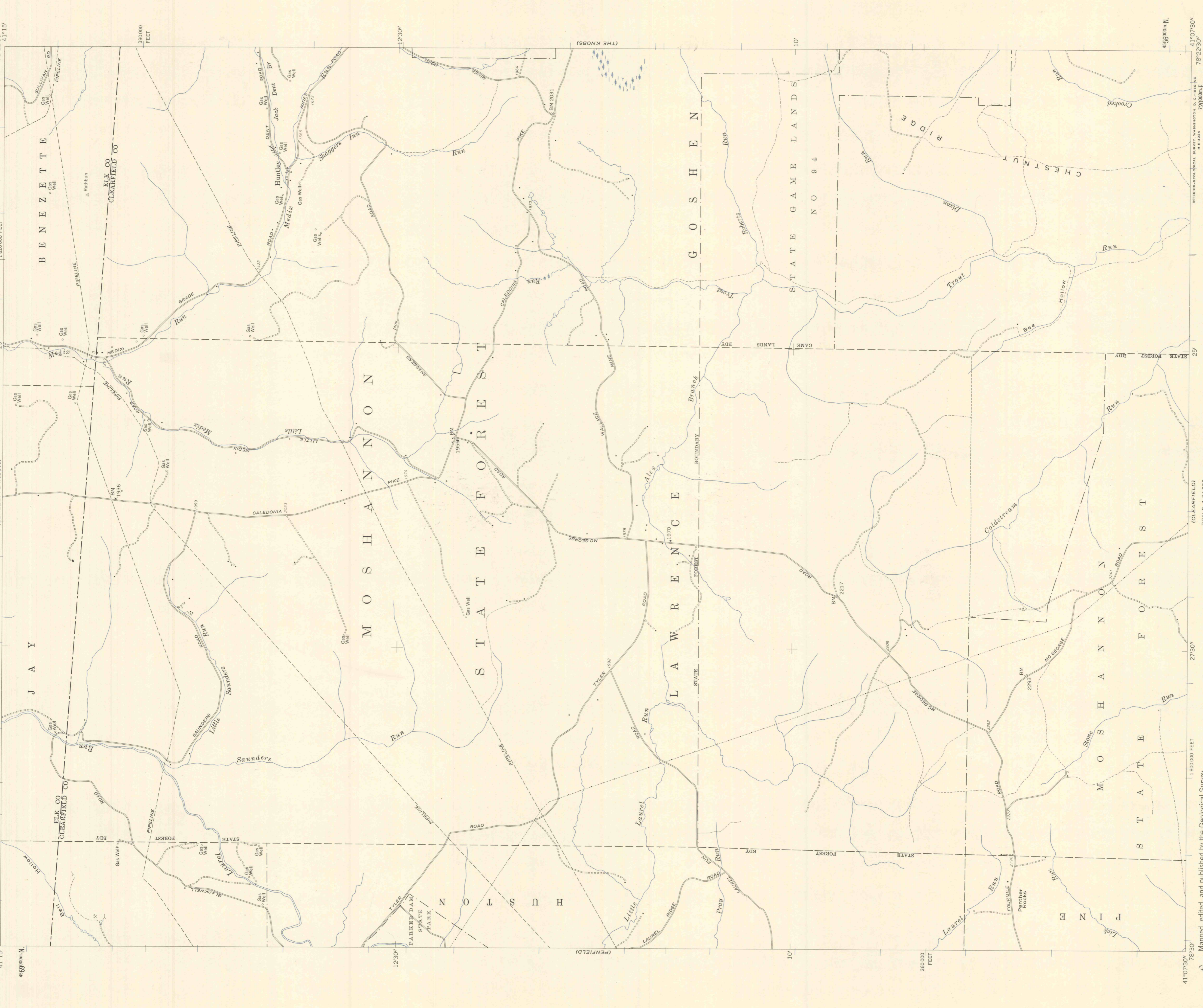


(ROADWAY 1:82,500)
41°15'N
78°30'W

UNITED STATES
DEPARTMENT OF THE INTERIOR
GEOLOGICAL SURVEY

HUNTLEY QUADRANGLE
PENNSYLVANIA
7.5 MINUTE SERIES (TOPOGRAPHIC)
NW 1/4 CLEARFIELD 15' QUADRANGLE
78°22'30"W
41°15'N



Mapped, edited, and published by the Geological Survey
Control by USGS and USC&GS
Topography from aerial photographs by photogrammetric methods
Aerial photographs taken 1958. Field check 1959
Polyconic projection, 1927 North American datum
10,000-foot grid based on Pennsylvania coordinate system, north zone
1000-meter Universal Transverse Mercator grid ticks,
zone 17, shown in blue
Unchecked elevations are shown in brown.

TRUE NORTH
MAGNETIC NORTH

SCALE 1:24,000
1 1000 2000 3000 4000 5000 6000 7000 FEET
1 1 2 3 4 5 6 7 8 9 10 11 12 13 14 15 16 17 18 19 20 KILOMETER
CONTOUR INTERVAL 20 FEET
DATUM IS MEAN SEA LEVEL

ROAD CLASSIFICATION
Light duty
Unimproved dirt



THIS MAP COMPLES WITH NATIONAL MAP ACCURACY STANDARDS
FOR THE U.S. GEOLOGICAL SURVEY WASHINGTON 25, D. C.
A FOLDER DESCRIBING TOPOGRAPHIC MAPS AND SYMBOLS IS AVAILABLE ON REQUEST

HUNTLEY, PA.
NW 1/4 CLEARFIELD 15' QUADRANGLE
N4107.5-W7822.5/7.5
1959

27