

(LUTHERSBURG)

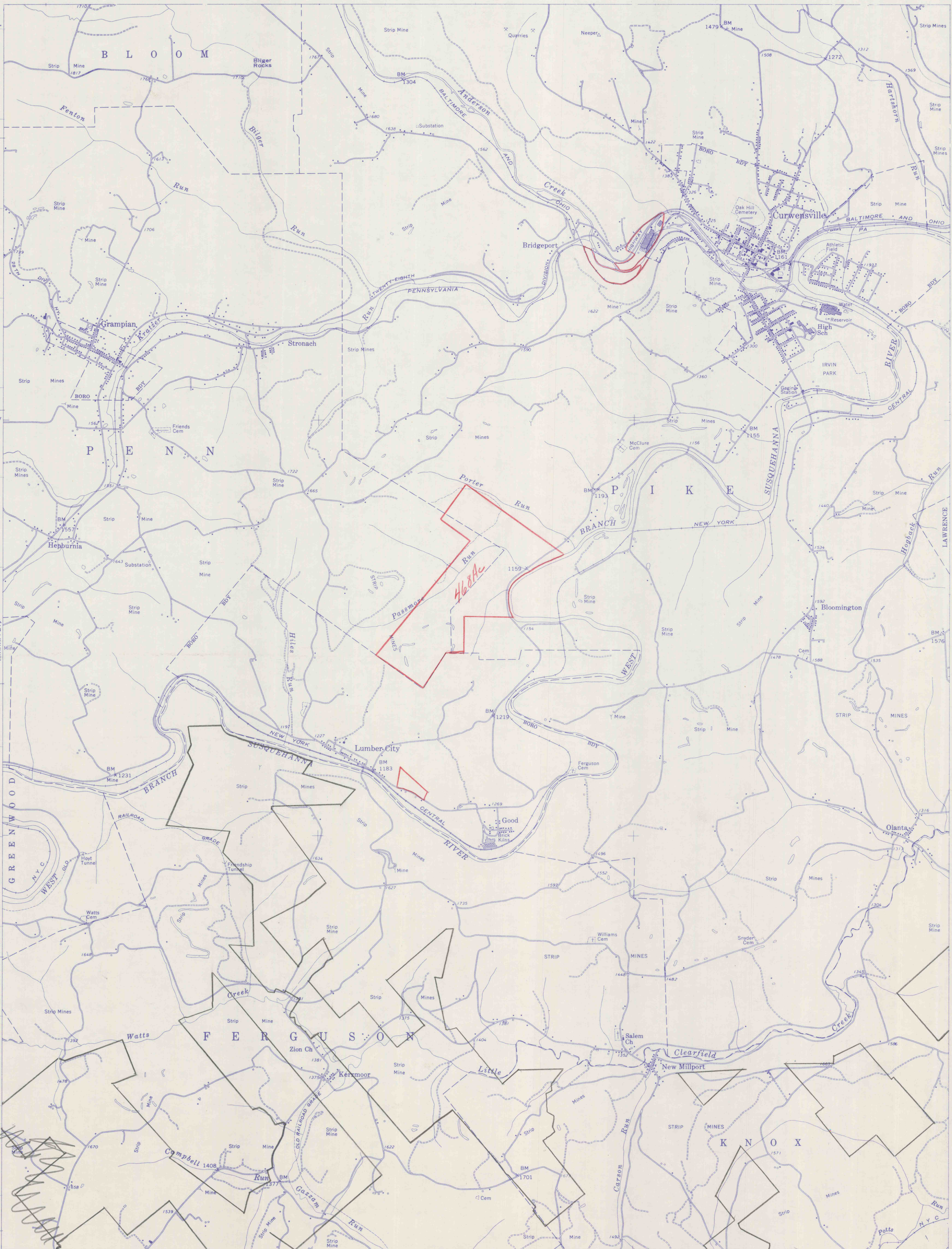
4541000m N.

57°30'

55'

260 000 FEET

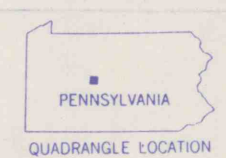
(WESTOVER)



1. U.S. National Grid based on the Universal Transverse Mercator system, north zone
 1000-meter Universal Transverse Mercator grid ticks, zone 17, shown in blue
 Fine red dashed lines indicate selected fence and field lines visible on aerial photographs. This information is un-checked

1. 1° NORTH
 APPROXIMATE MEAN DECLINATION, 1959

DATUM IS MEAN SEA LEVEL



U. S. Route State Route

CURWENSVILLE, PA.
 NE 1/4 CURWENSVILLE 15' QUADRANGLE
 N 4052.5 - W 7830 / 7.5

THIS MAP COMPLIES WITH NATIONAL MAP ACCURACY STANDARDS
 FOR SALE BY U. S. GEOLOGICAL SURVEY, WASHINGTON 25, D. C.
 A FOLDER DESCRIBING TOPOGRAPHIC MAPS AND SYMBOLS IS AVAILABLE ON REQUEST

1959