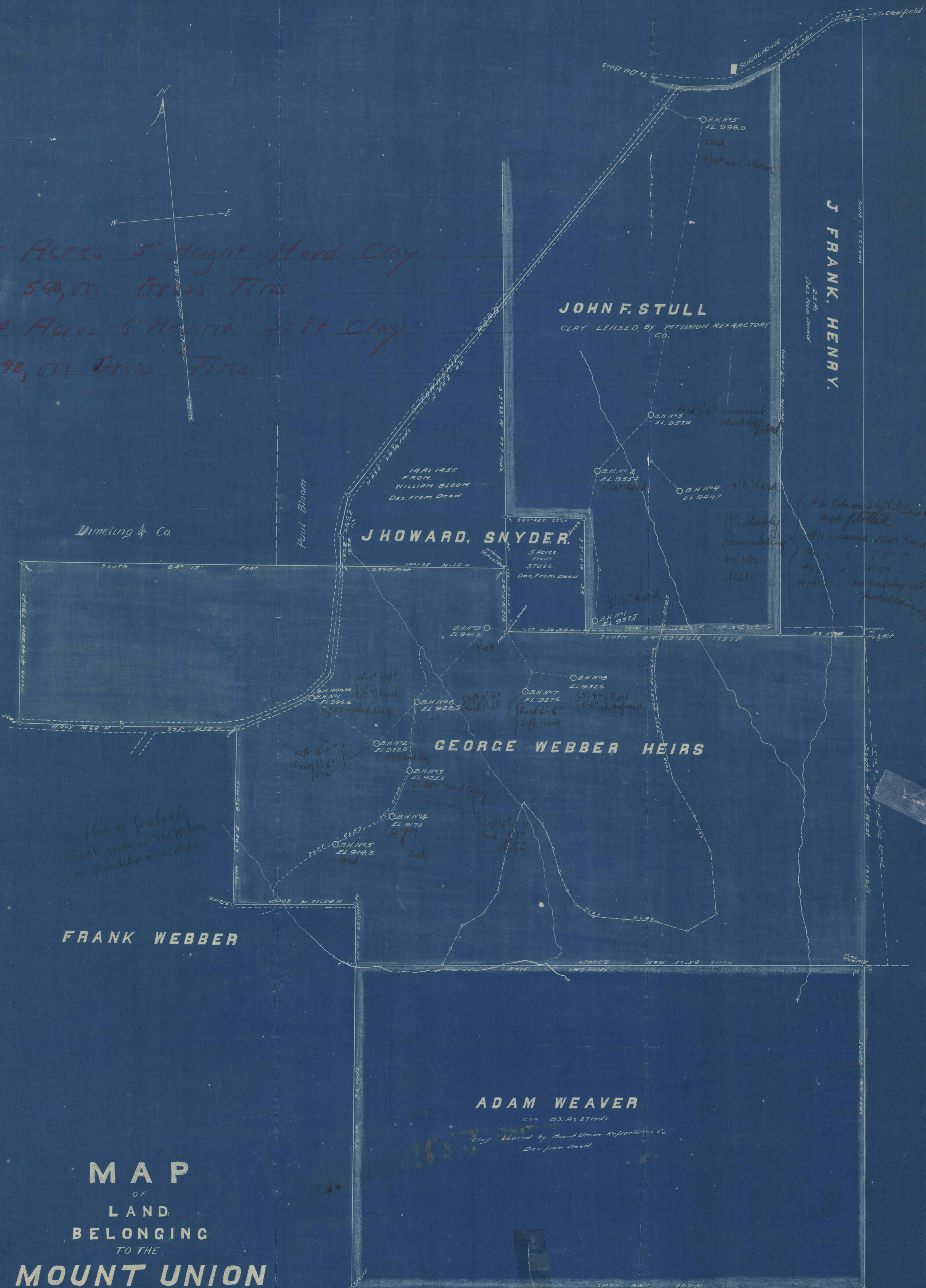


35 Acres 5' Height Hard Clay
 500,000 Gross Tons
 10 Acres 6' Height Soft Clay
 192,000 Gross Tons



Dimeling & Co.

JOHN F. STULL
 CLAY LEASED BY MOUNT UNION REFRACTORIES CO.

J HOWARD, SNYDER.
 5 ACRES FRONT STULL
 Des. From Deed

GEORGE WEBBER HEIRS

FRANK WEBBER

ADAM WEAVER
 CON. 83. AS 27 rods
 Clay leased by Mount Union Refractories Co.
 Des. from Deed.

MAP
 OF
 LAND
 BELONGING
 TO THE
MOUNT UNION
REFRACTORIES CO.
 BLOOM TOWNSHIP,
 CLEARFIELD COUNTY,
 PENNA.

Scale 1" = 200ft

J FRANK, HENRY.
 Des. from Deed

#10 when shot clay not filled
 #11 - some iron sand
 #12 - " " " "
 #13 - " " " "
 #14 - " no hard clay but probably in effect

Probably remaining on the Stull

This is probably best given as the best in the records