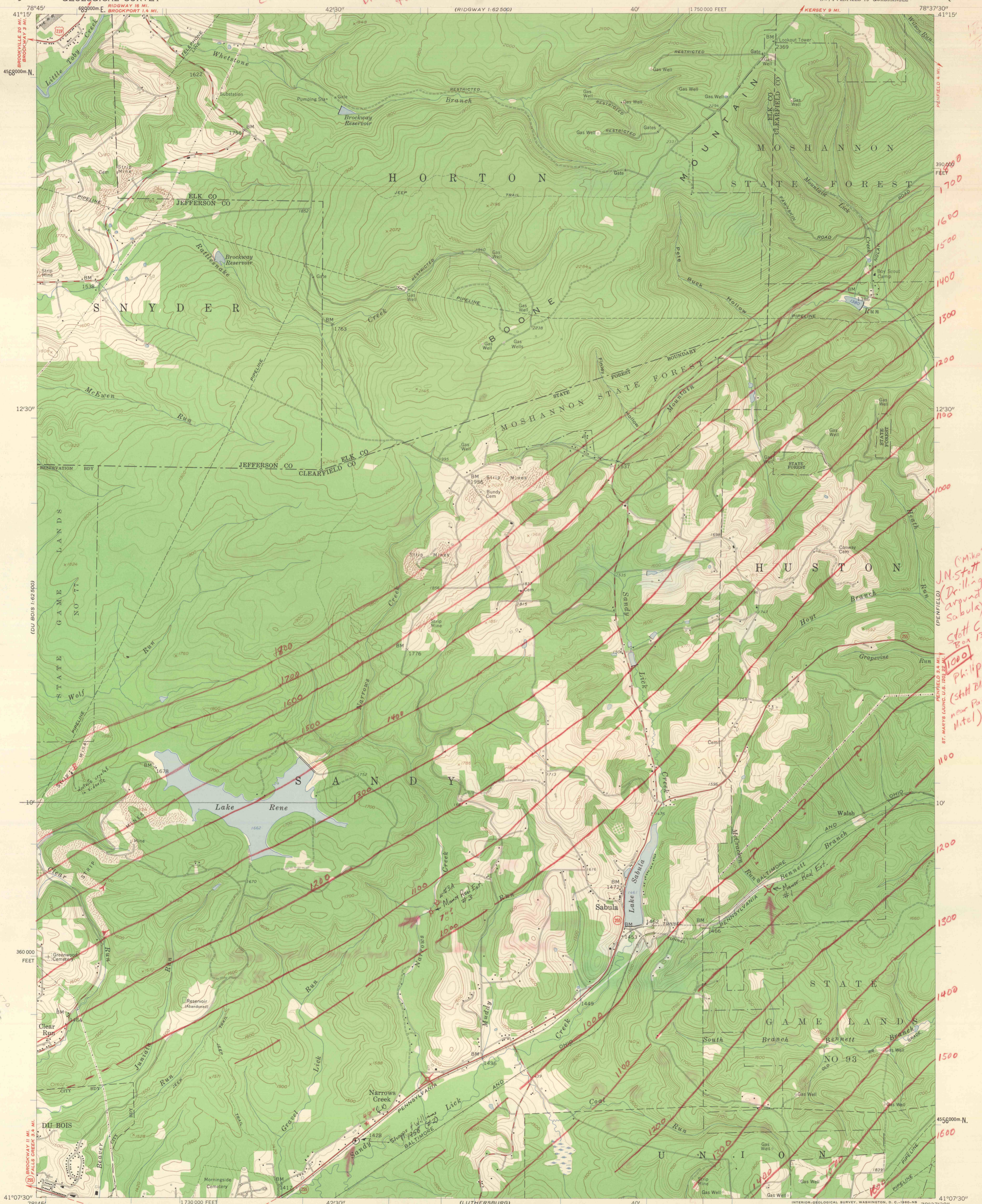


*Structure on LK -
Contours on LK -
Copied from
blueprint map belonging
to John Hess, Clearfield.*



*(Mike)
J.N. Stott
Drilling
around
Sabula
Stott C.C.
Box 130
Phillipsby
(Stott Bldg.
near Passmore
Hotel)*

Mapped, edited, and published by the Geological Survey

Control by USGS and USC&GS

Topography from aerial photographs by photogrammetric methods

Aerial photographs taken 1958. Field check 1959

Polyconic projection. 1927 North American datum

10,000-foot grid based on Pennsylvania coordinate system,

north zone

1000-meter Universal Transverse Mercator grid ticks,

zone 17, shown in blue

Fine red dashed lines indicate selected fence and field lines

visible on aerial photographs. This information is unchecked

6.4°
TRUE NORTH
MAGNETIC NORTH

APPROXIMATE MEAN
DECLINATION, 1959

SCALE 1:24,000

CONTOUR INTERVAL 20 FEET

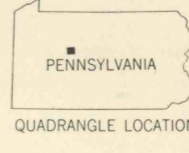
DATUM IS MEAN SEA LEVEL

1 1000 2000 3000 4000 5000 6000 7000 FEET

1 5 0 5 10 KILOMETER

ROAD CLASSIFICATION

Heavy-duty ——— Light-duty ———
Medium-duty ——— Unimproved dirt ———
U.S. Route ——— State Route ———



SABULA, PA.
NW 1/4 PENFIELD 15' QUADRANGLE
N 41.07.5 - W 78.37.5

1959

THIS MAP COMPLIES WITH NATIONAL MAP ACCURACY STANDARDS
FOR SALE BY U.S. GEOLOGICAL SURVEY, WASHINGTON 25, D. C.
A FOLDER DESCRIBING TOPOGRAPHIC MAPS AND SYMBOLS IS AVAILABLE ON REQUEST