

EXISTING BARN

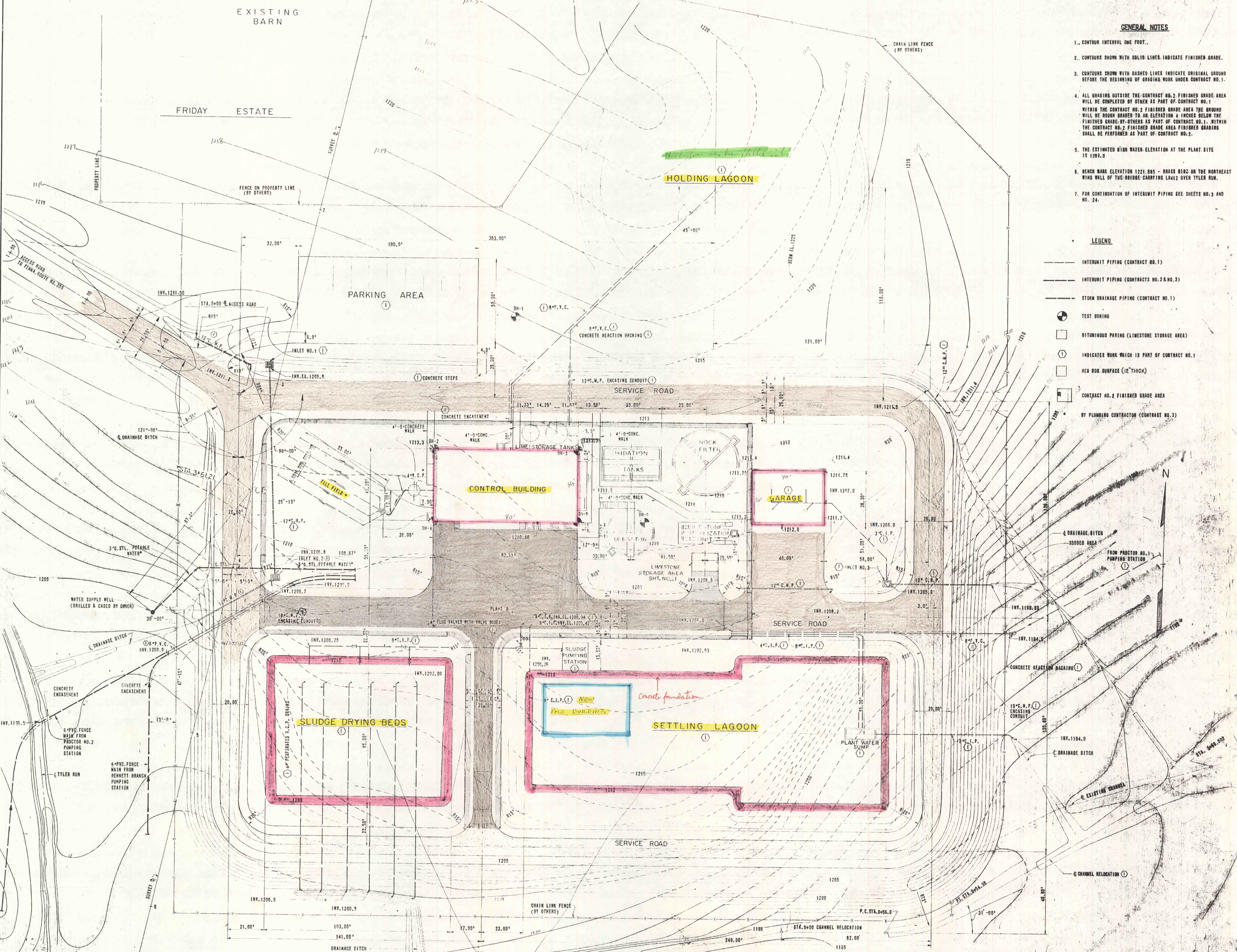
FRIDAY ESTATE

GENERAL NOTES

1. CONTOUR INTERVAL ONE FOOT.
2. CONTOURS SHOWN WITH SOLID LINES INDICATE FINISHED GRADE.
3. CONTOURS SHOWN WITH DASHED LINES INDICATE ORIGINAL GROUND BEFORE THE BEGINNING OF GRADING WORK UNDER CONTRACT NO. 1.
4. ALL GRADING OUTSIDE THE CONTRACT NO. 2 FINISHED GRADE AREA WILL BE COMPLETED BY OTHER AS PART OF CONTRACT NO. 1 WITHIN THE CONTRACT NO. 2 FINISHED GRADE AREA THE GROUND WILL BE ROUGH GRADED TO AN ELEVATION 4 INCHES BELOW THE FINISHED GRADE BY OTHER AS PART OF CONTRACT NO. 1. WITHIN THE CONTRACT NO. 2 FINISHED GRADE AREA FINISHED GRADING SHALL BE PERFORMED AS PART OF CONTRACT NO. 2.
5. THE ESTIMATED HIGH WATER ELEVATION AT THE PLANT SITE IS 1201.0
6. BENCH MARK ELEVATION 1221.685 - BRASS DISC ON THE NORTHEAST WING WALL OF THE BRIDGE CARRYING LR412 OVER TYLER RUN.
7. FOR CONTINUATION OF INTERURITY PIPING SEE SHEETS NO. 3 AND NO. 24.

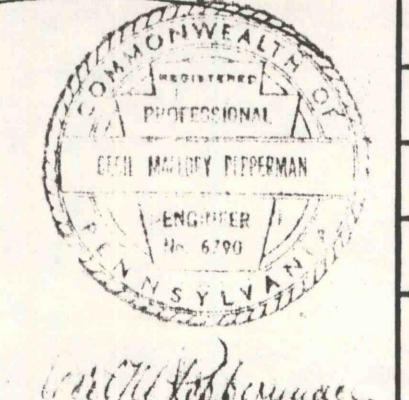
LEGEND

- INTERURITY PIPING (CONTRACT NO. 1)
- INTERURITY PIPING (CONTRACTS NO. 2 & NO. 3)
- STORM DRAINAGE PIPING (CONTRACT NO. 1)
- TEST BORING
- BITUMINOUS PAVING (LIMESTONE STORAGE AREA)
- INDICATES WORK WHICH IS PART OF CONTRACT NO. 1
- RED ODD SURFACE (12" THICK)
- CONTRACT NO. 2 FINISHED GRADE AREA BY PLUMBING CONTRACTOR (CONTRACT NO. 3)



NO.	REVISIONS	DATE	BY

Note: make beds and then lagoons were filled in 7/27/47 AG



DRAWN J. B. S.
 TRACED J. B. S.
 CHECKED C. K. M.
 APPROVED G. G. B.
 APPROVED

GANNETT FLEMING CORDDRY & CARPENTER, INC.
 ENGINEERS
 600 N. SECOND ST. HARRISBURG, PENNA.

JOB NO. **4590**
 SCALE 1" = 20'
 DATE JUNE 1967

SHEET NO. 1
 THE PENNSYLVANIA STATE UNIVERSITY
 CONSTRUCTION OF
 A MINE DRAINAGE TREATMENT PLANT
 HUSTON TOWNSHIP, CLEARFIELD CO., PA.
GRADING AND LOCATION PLAN
 147510