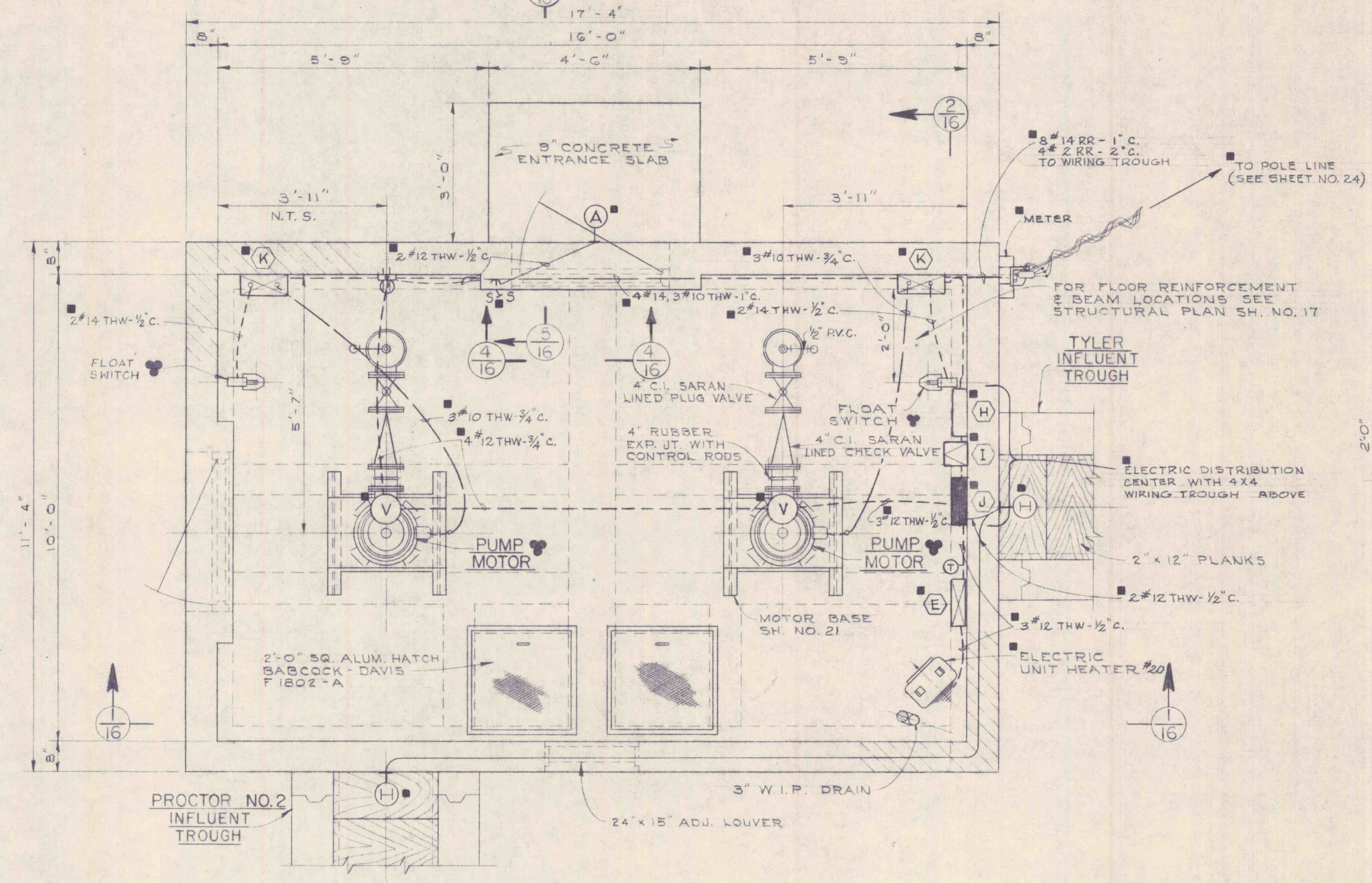
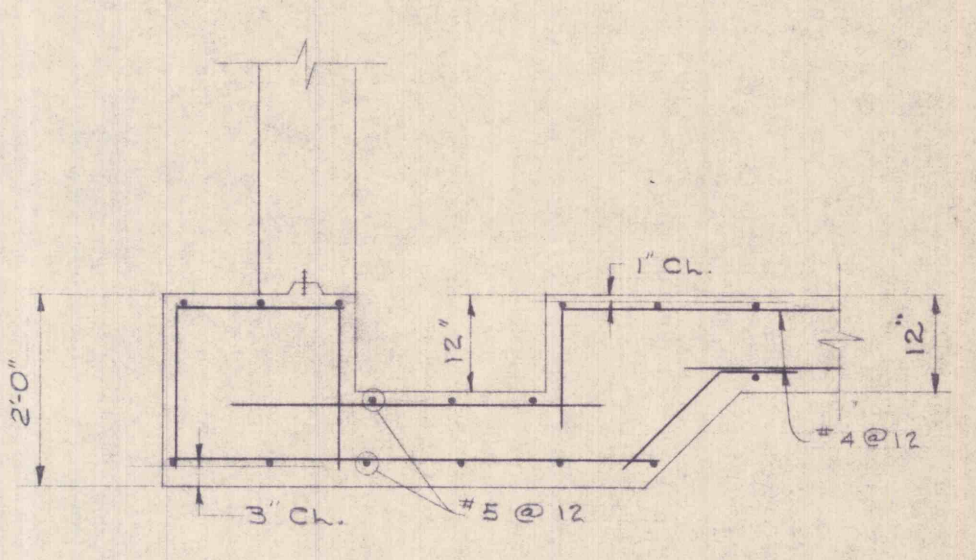


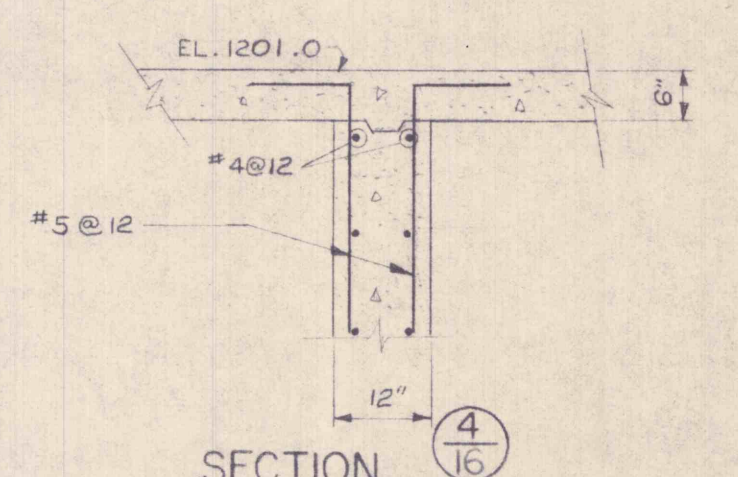
**BASEMENT PLAN**  
SCALE 1/2"=1'-0"



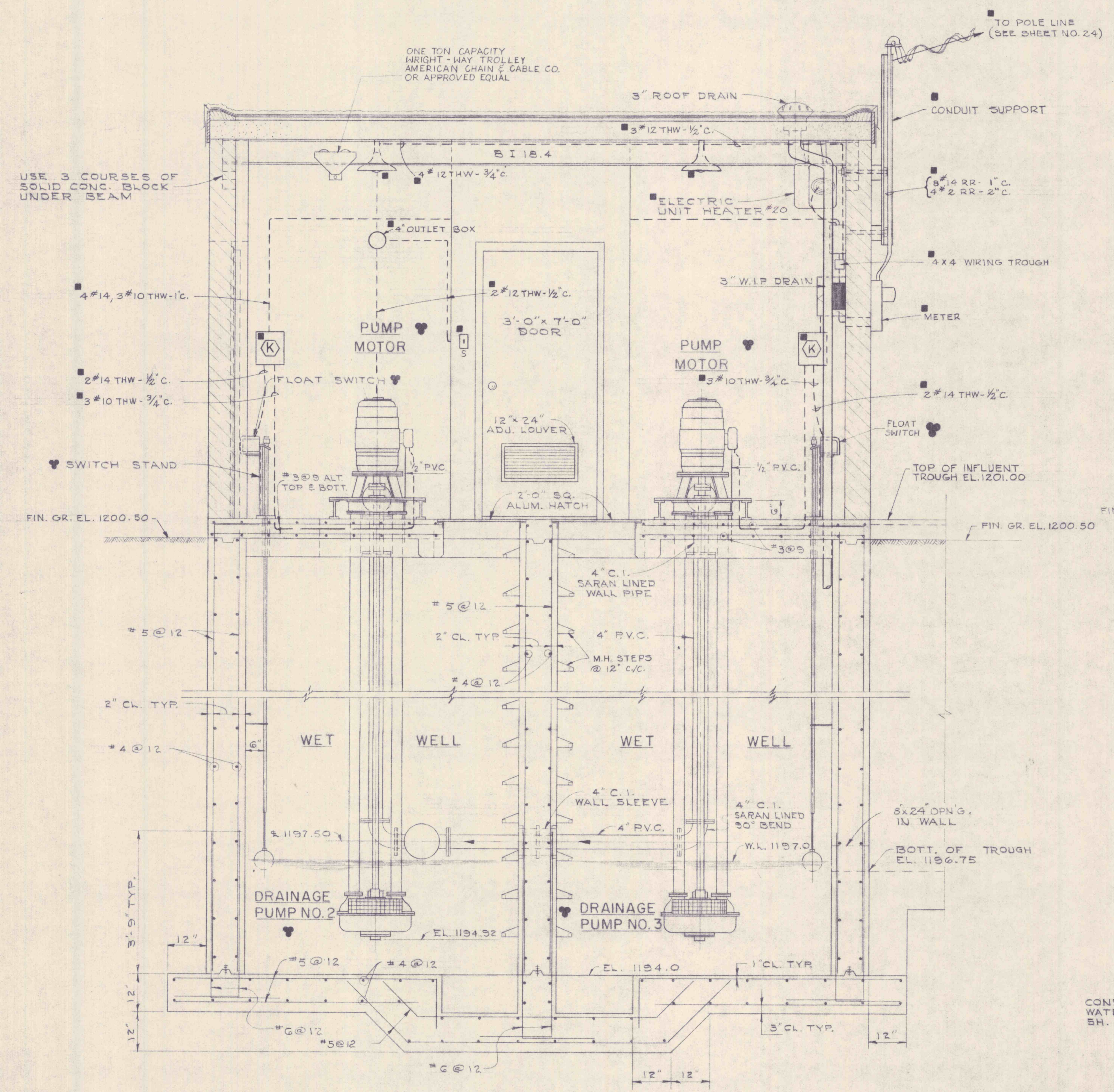
**GROUND FLOOR PLAN**  
SCALE 1/2"=1'-0"



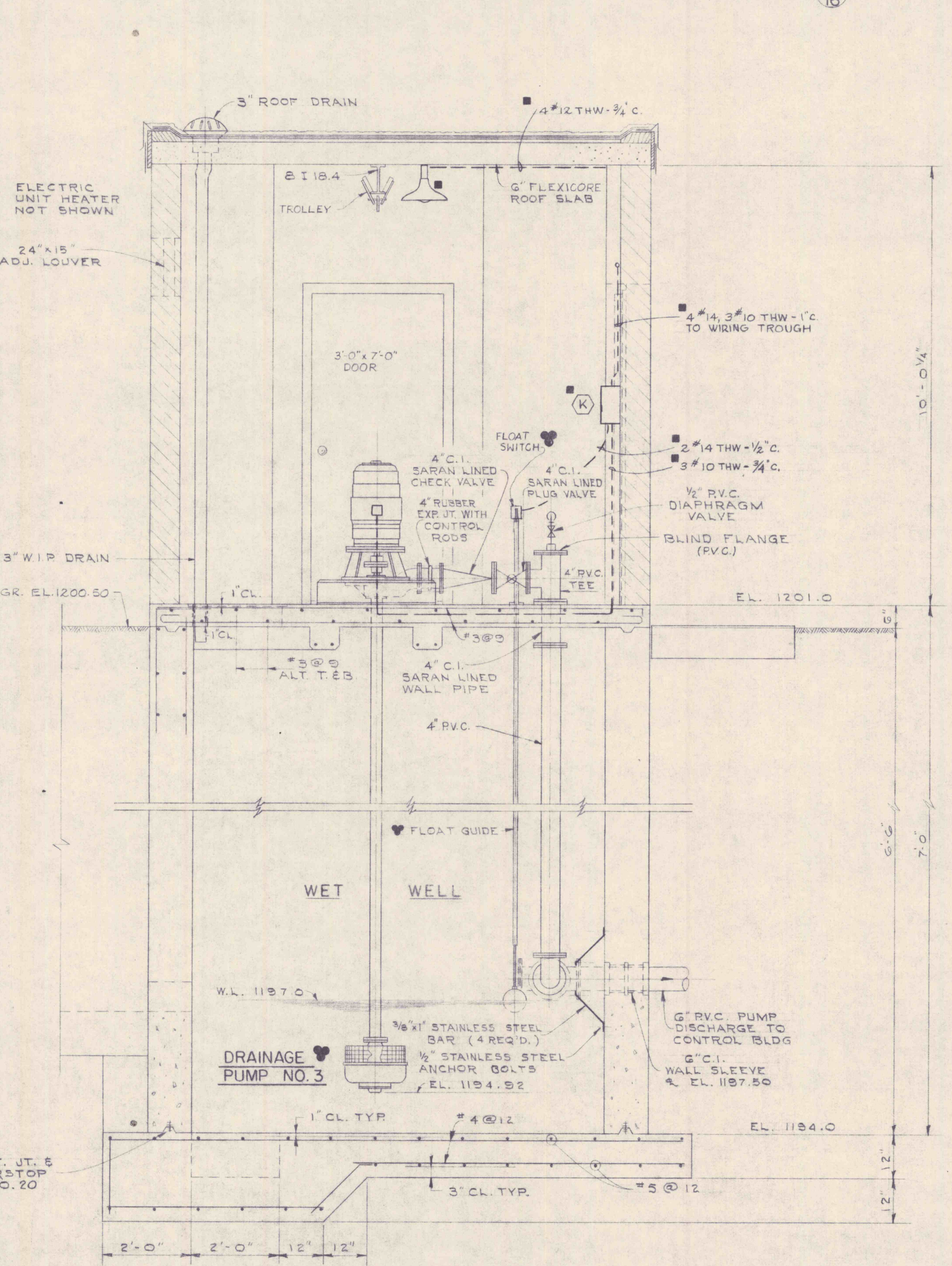
**SECTION 3/16**  
SCALE 1/2"=1'-0"



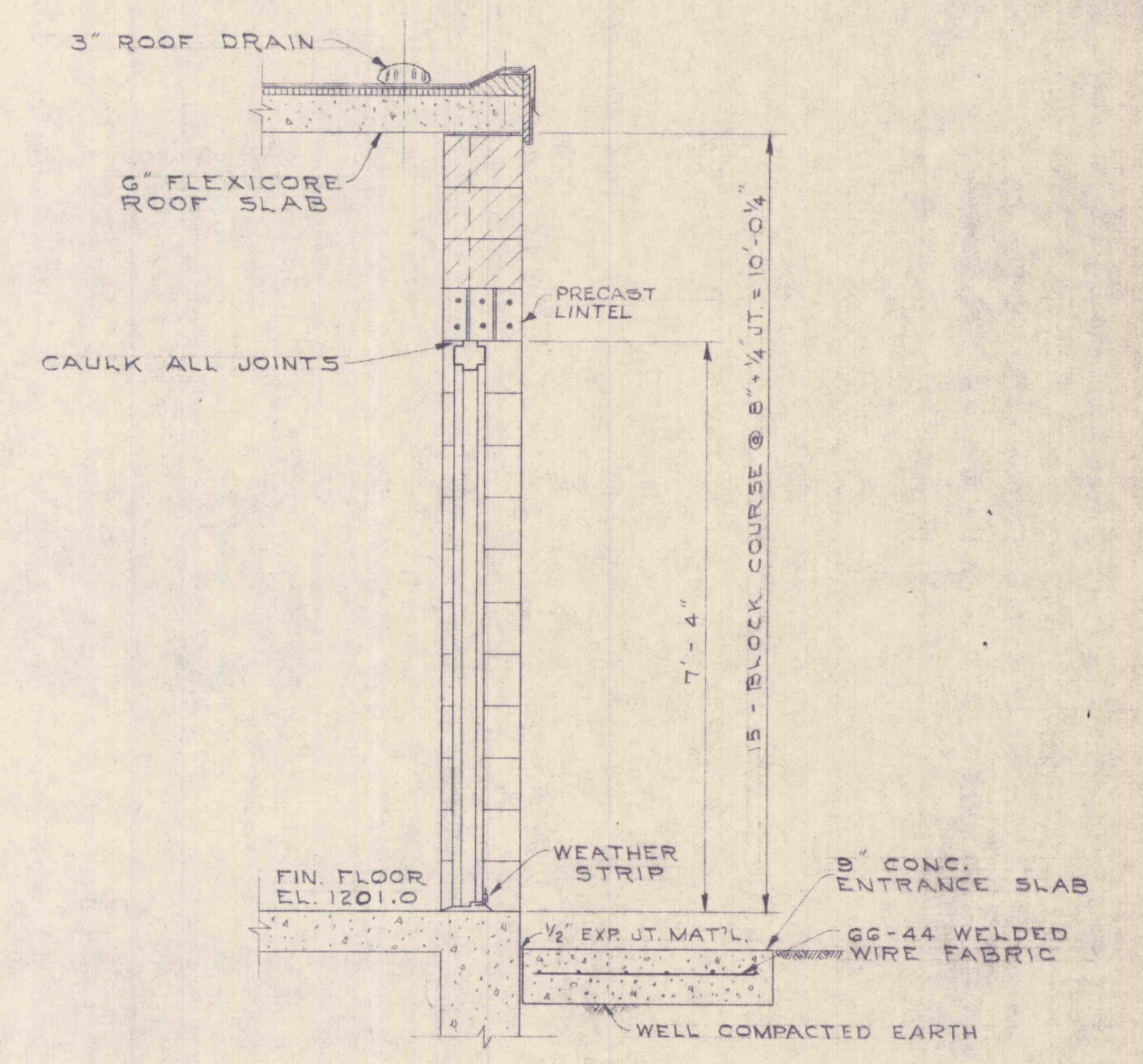
**SECTION 4/16**  
SCALE 1/2"=1'-0"



**SECTION 1/16**  
SCALE 1/2"=1'-0"



**SECTION 2/16**  
SCALE 1/2"=1'-0"



**SECTION 5/16**  
SCALE 1/2"=1'-0"

**NOTE:**  
1. UNDER ALTERNATES B & C OF THE ELECTRICAL CONTRACT ALL ELECTRICAL WORK AT PROCTOR NO. 2 PUMPING STATION IS DELETED.

**LEGEND**  
 \* FURNISHED BY THE OWNER AND INSTALLED BY THE CONTRACTOR  
 ■ BY ELECTRICAL CONTRACTOR

REVISIONS			
NO.	DESCRIPTION	DATE	BY



**GANNETT FLEMING CORDDRY & CARPENTER, INC.**  
**ENGINEERS**  
 600 N. SECOND ST. HARRISBURG, PENNA.

**JOB NO. 4590**  
**SCALE AS SHOWN**  
**DATE JUNE 1967**  
**THE PENNSYLVANIA STATE UNIVERSITY**  
**CONSTRUCTION OF**  
**A MINE DRAINAGE TREATMENT PLANT**  
**HUSTON TOWNSHIP, CLEARFIELD CO., PA.**  
**PROCTOR NO. 2 PUMPING STATION**  
**PLANS & SECTIONS**

**SHEET NO. 16**  
**I-17525**