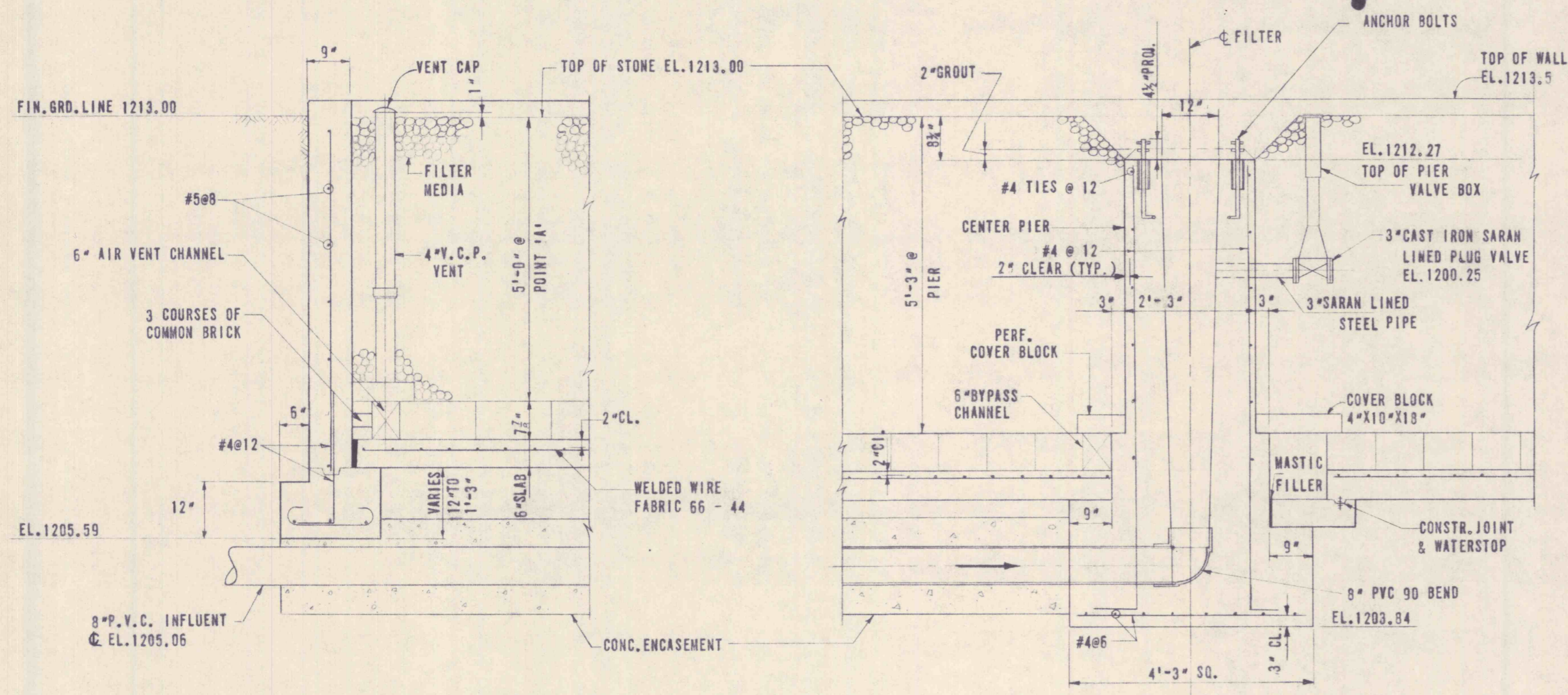
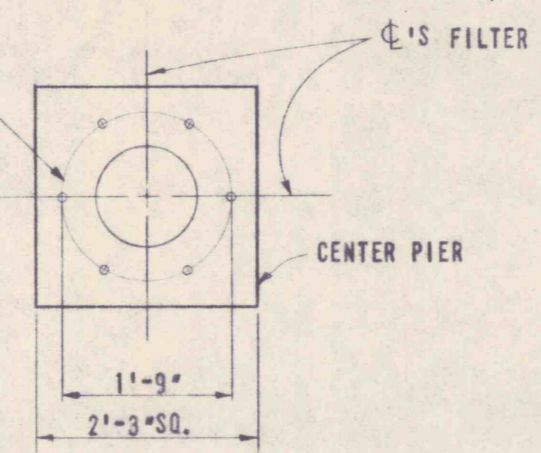
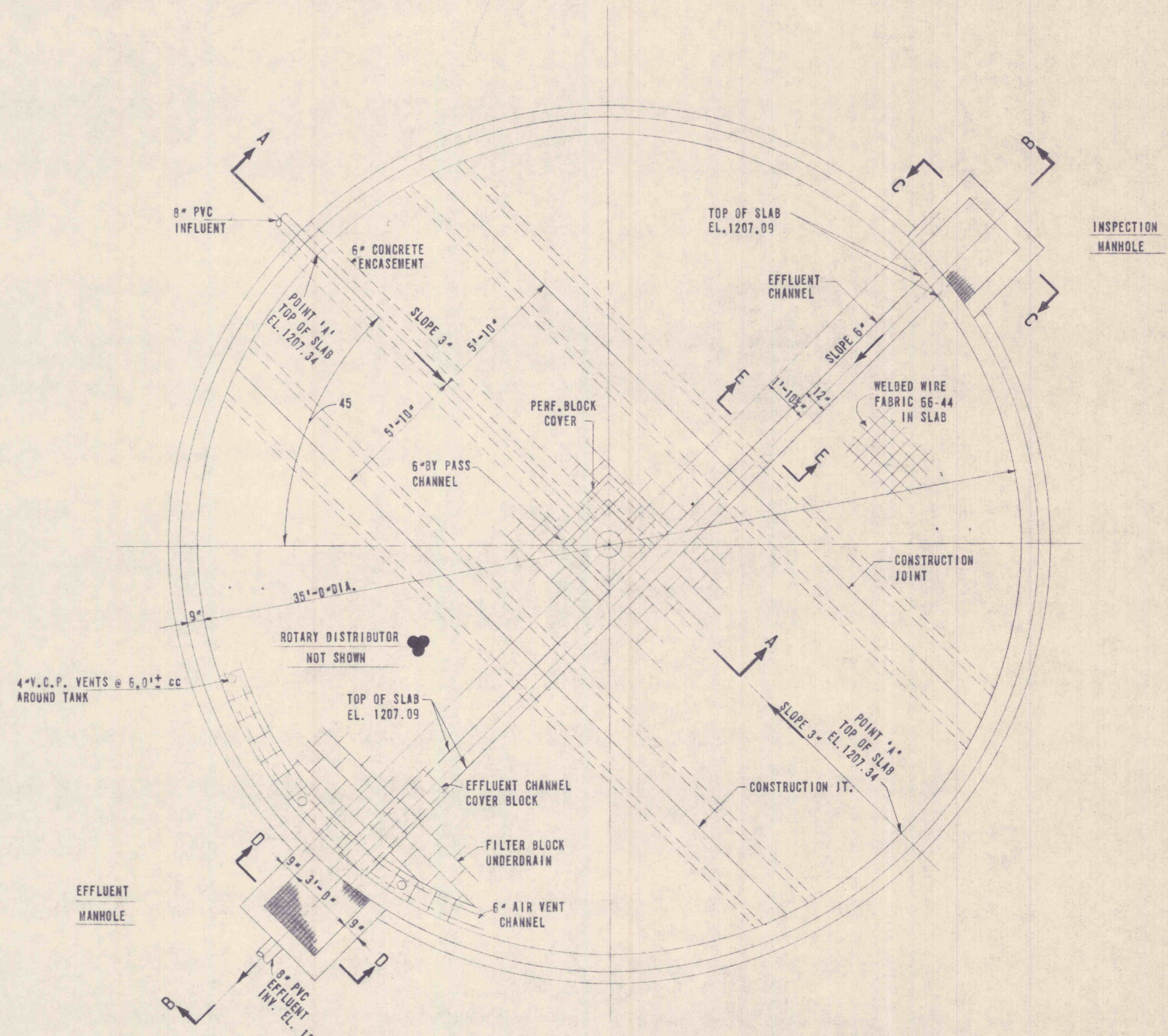


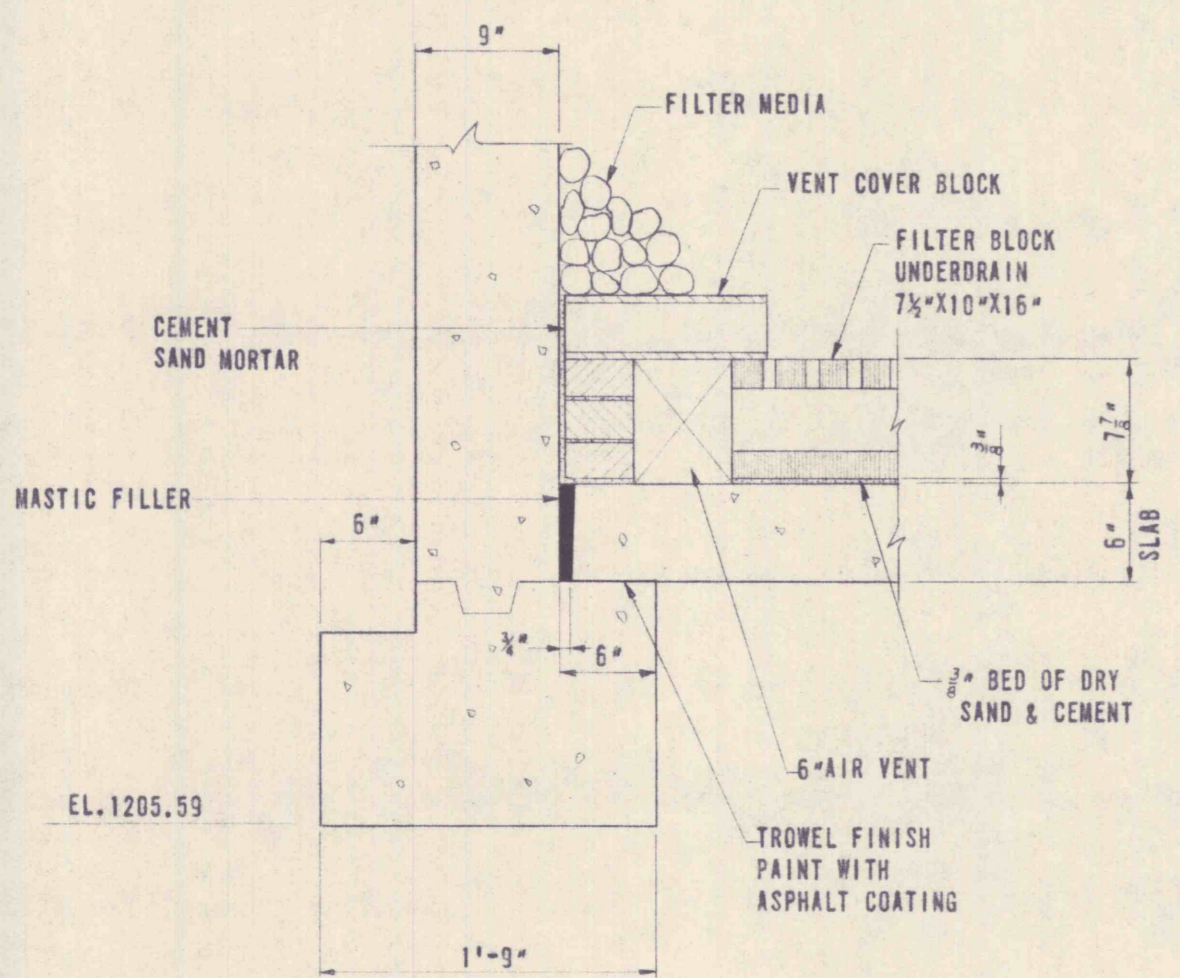
6-1/2" DIA. 11'-4" LG. TO BEND
HOOK ANCHOR BOLTS WITH
2-HEX. NUTS, 2" C.W. & 11'-2"
STD. PIPE SLEEVE & 6" LG.
(EQUALLY SPACED ON B.C.)



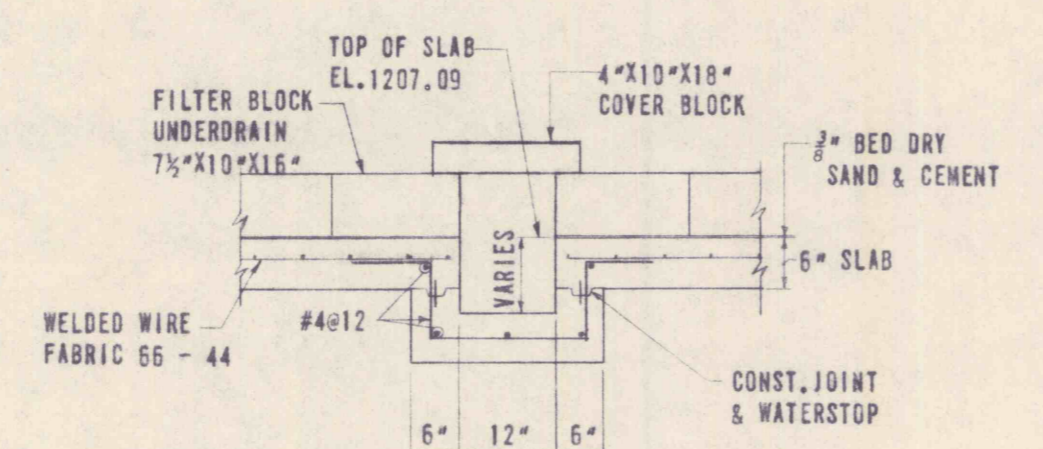
SECTION A-A
SCALE 1/4" = 1'-0"



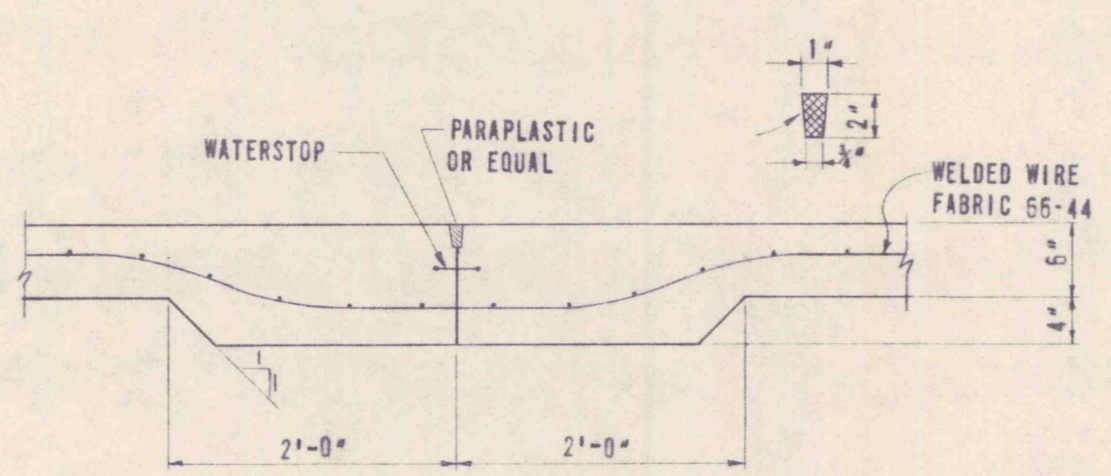
PLAN
SCALE 1/4" = 1'-0"



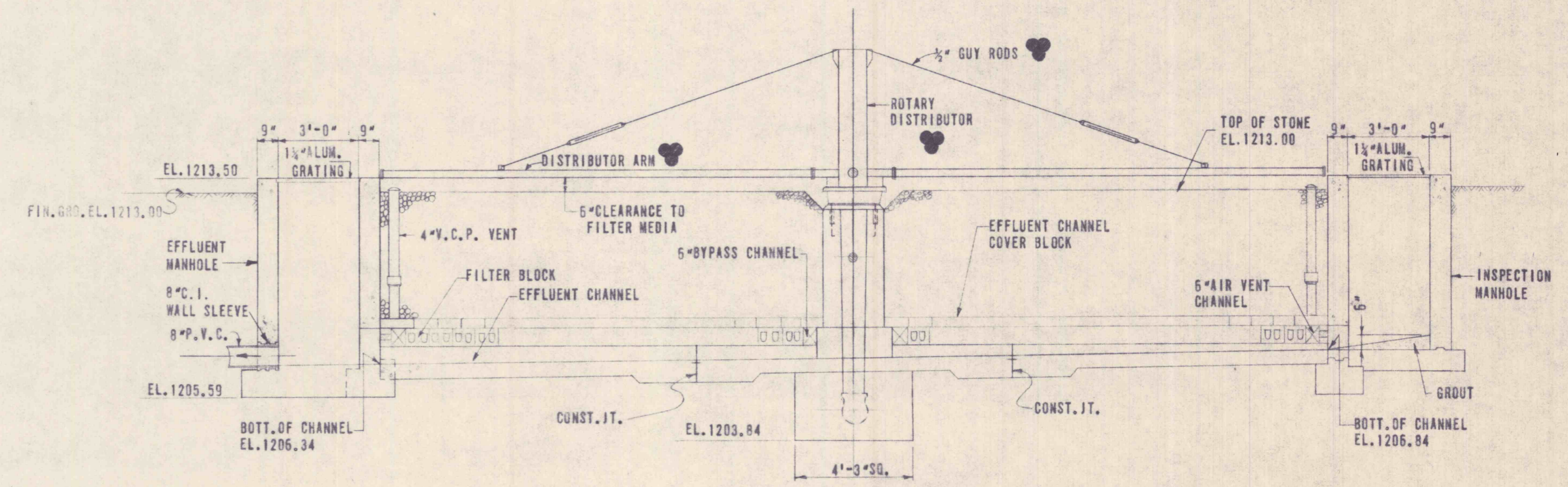
SECTION AT EDGE OF SLAB
SCALE 1" = 1'-0"



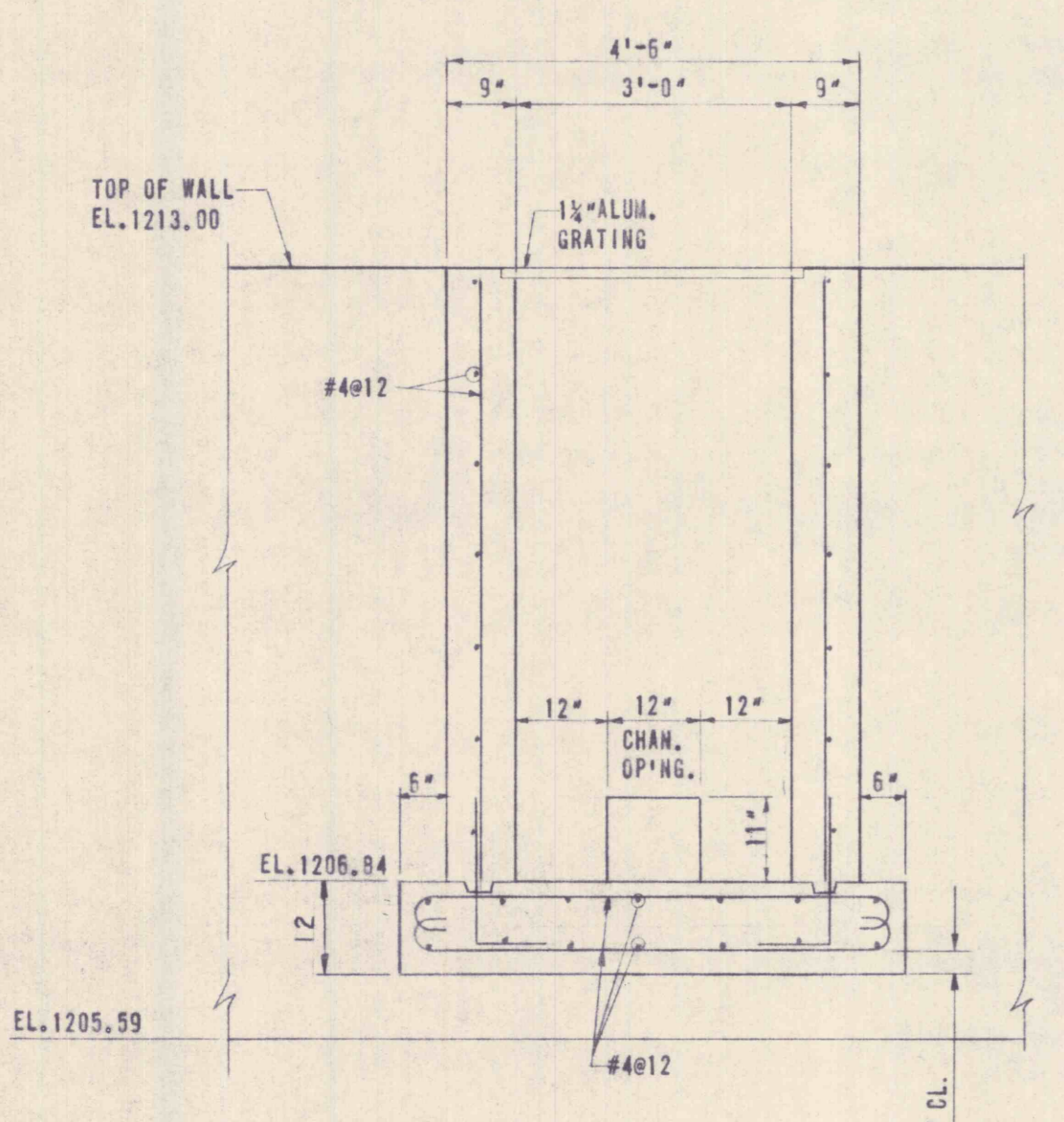
SECTION E-E
SCALE 1/2" = 1'-0"



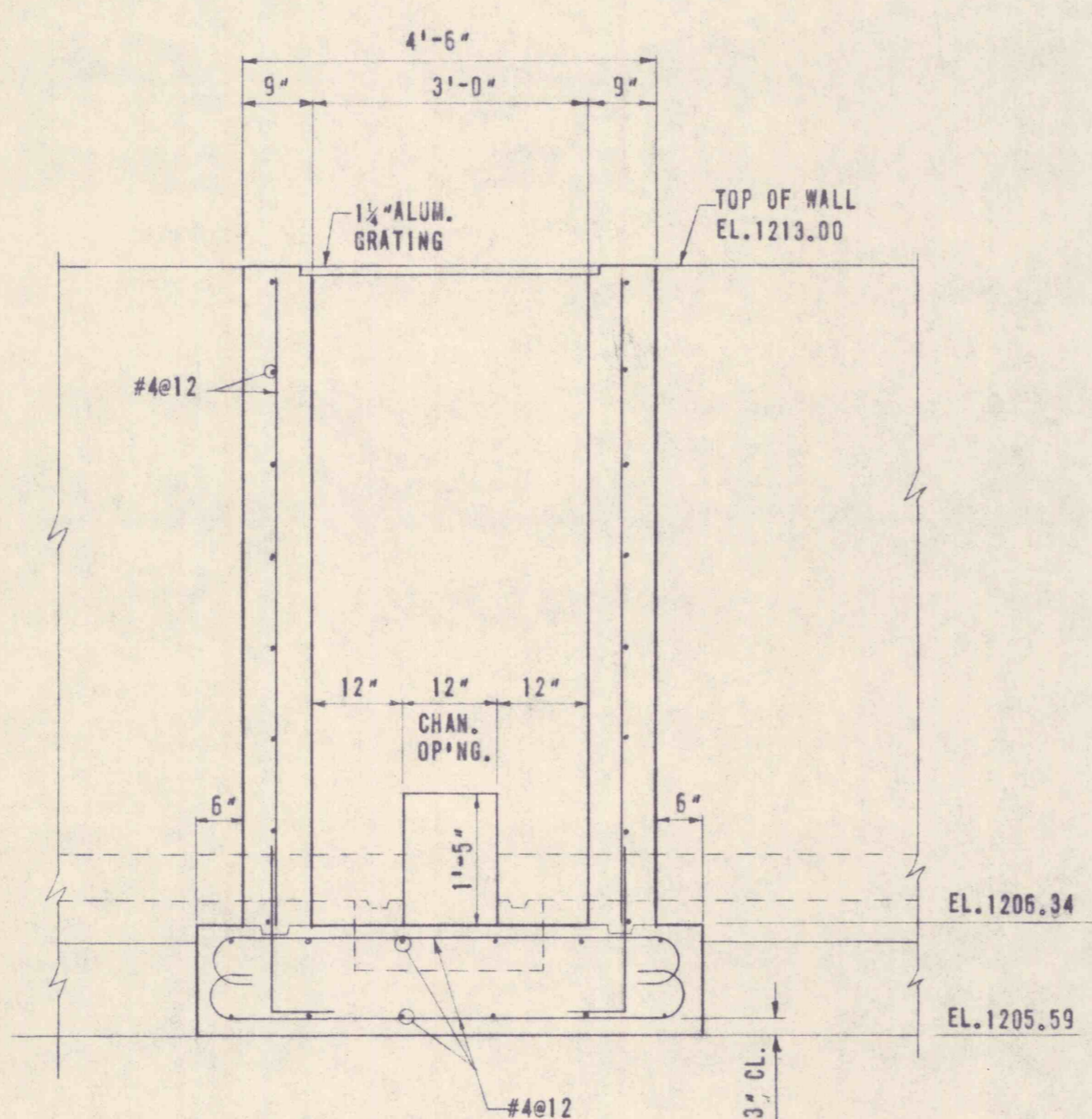
CONST. JOINT DETAIL
SCALE 1/2" = 1'-0"



SECTION B-B
SCALE 1/4" = 1'-0"



SECTION C-C
SCALE 1/2" = 1'-0"



SECTION D-D
SCALE 1/2" = 1'-0"

FURNISHED BY THE OWNER AND
INSTALLED BY THE CONTRACTOR

REVISIONS			
NO.	DESCRIPTION	DATE	BY



GANNETT FLEMING CORDRY & CARPENTER, INC.
ENGINEERS
600 N. SECOND ST. HARRISBURG, PENNA.

JOB NO.	4590	SHEET NO.	15
SCALE	AS SHOWN	DRAWING NO.	I-17524
DATE	JUNE 1967	THE PENNSYLVANIA STATE UNIVERSITY CONSTRUCTION OF A MINE DRAINAGE TREATMENT PLANT HUSTON TOWNSHIP, CLEARFIELD CO., PA.	
DRAWN J. B. S.		ROCK FILTER	
TRACED J. B. S.			
CHECKED C. K. M.			
APPROVED G. G. B.			