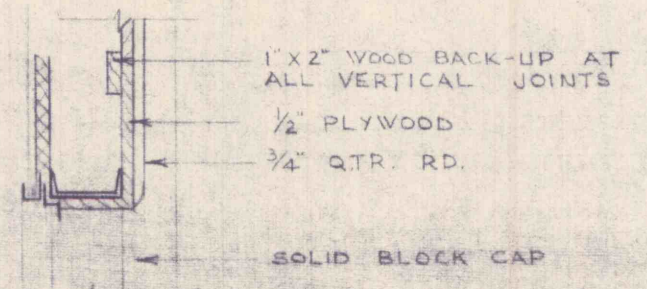


TYPICAL SECTION SLEEPING QUARTERS OFFICE AND LABORATORY SCALE: 3/4\"/>

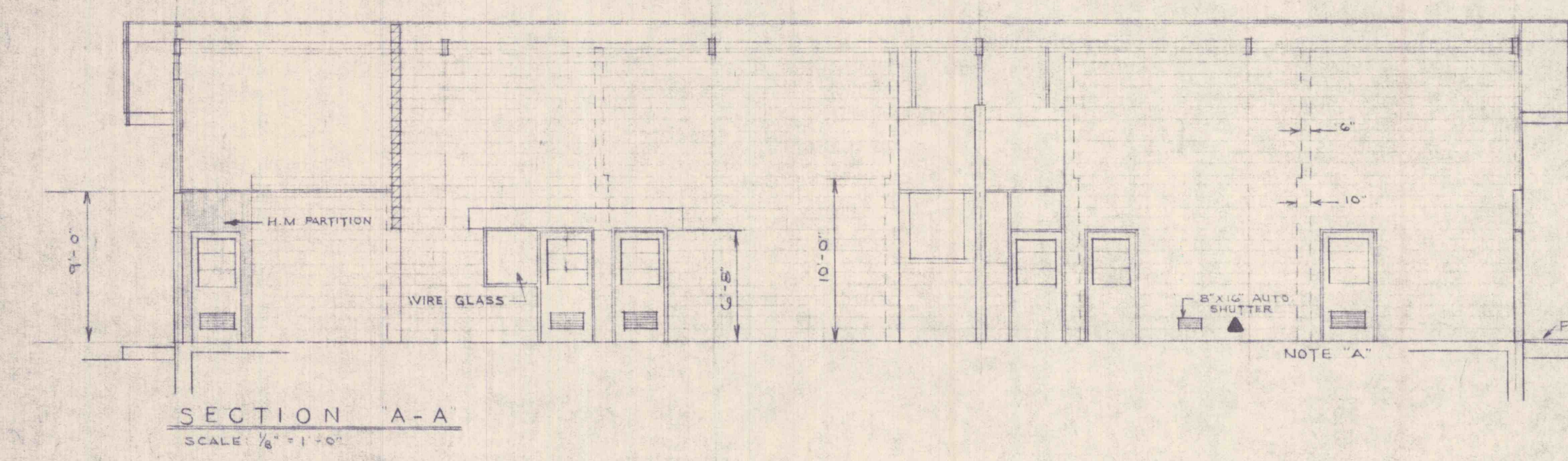
SECTION C' SCALE: 3/4\"/>



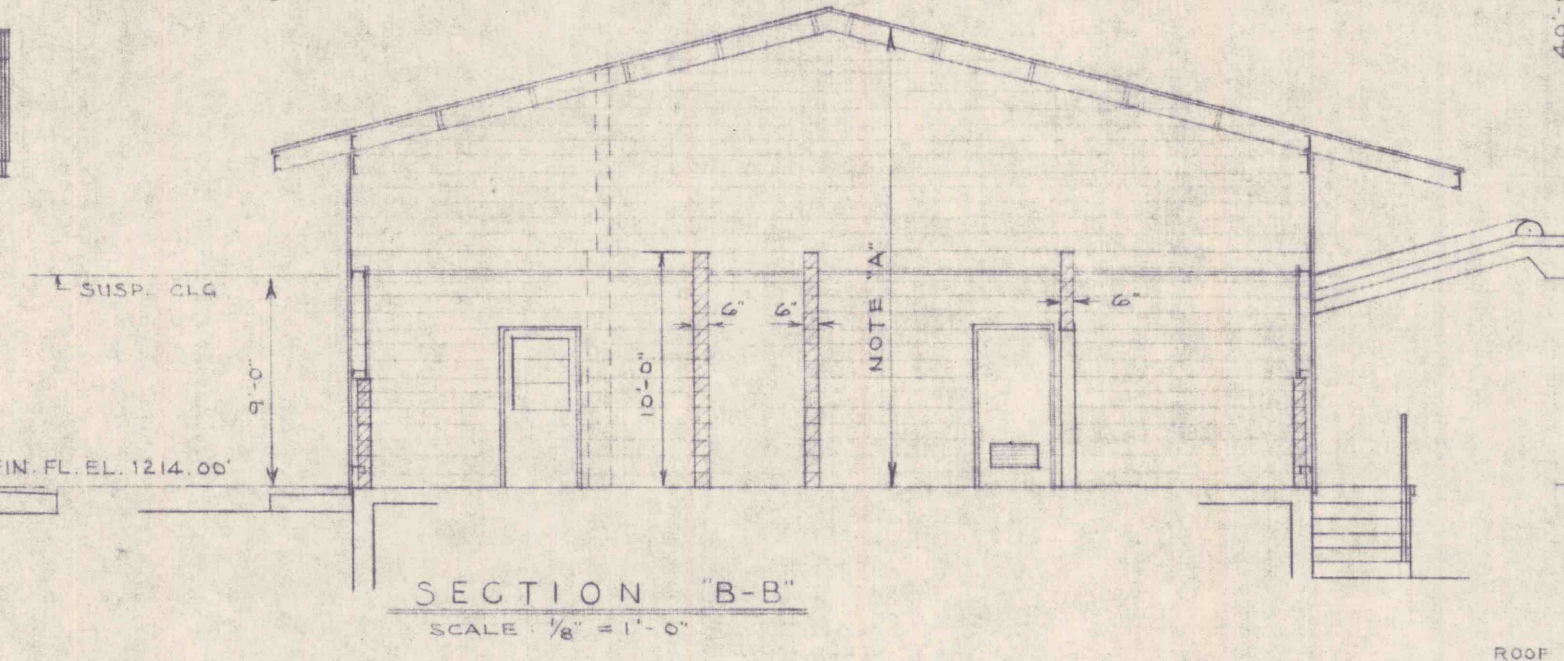
JAMB SECTION SCALE: 3/4\"/>

DETAIL - JAMB SCALE: 1 1/2\"/>

TYPICAL SECTION THRU WINDOW WALL - WEST ELEV. SCALE: 1 1/2\"/>

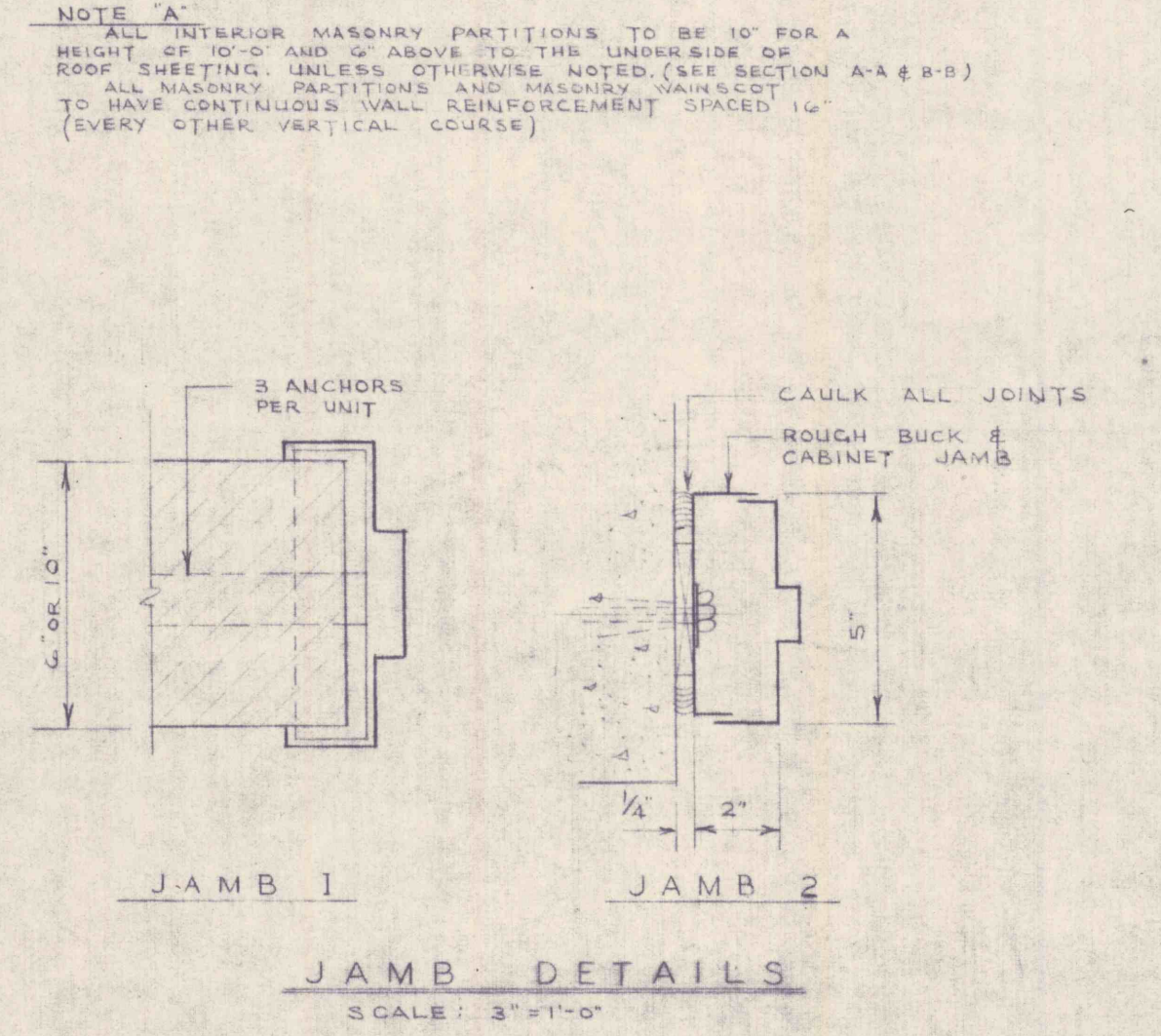


SECTION A-A SCALE: 3/4\"/>



SECTION B-B SCALE: 3/4\"/>

DOOR SCHEDULE									
DOOR NO.	TYPE	MATERIAL	SIZE	FRAME	LINTEL	THRESHOLD	GLASS	REMARKS	
			WIDTH & HT	THK. MATERIAL	JAMB				
D-1	A	HOLLOW METAL	3'-0" X 6'-8"	1 3/4" HOLLOW METAL			WIRE		PART OF HOLLOW METAL PARTITION
D-2	C	DO	DO	DO	1 DO	DO	DO		280 SQ. IN. FIXED LOUVER
D-3	C	DO	DO	DO	DO	DO	DO		DO
D-4	B	DO	DO	DO	DO	DO	WIRE		DO - PART OF H.M. PARTITION
D-5	B	DO	DO	DO	DO	DO	DO		DO - DO
D-6	A	DO	DO	DO	DO	DO	DO		DO
D-7	B	DO	DO	DO	DO	DO	DO		280 SQ. IN. FIXED LOUVER
D-8	B	DO	DO	DO	DO	DO	DO		280 SQ. IN. FIXED LOUVER
D-9	A	DO	DO	DO	DO	DO	DO		DO
D-10	B	DO	DO	DO	DO	DO	DO		280 SQ. IN. FIXED LOUVER
D-11	A	DO	3'-0" X 7'-0"	DO	DO	DO	ALUMINUM		PART OF H.M. WINDOW WALL WITH FIXED WIRE GLASS TRANSOM
D-12	A	DO	DO	DO	DO	DO	DO		WIRE GLASS TRANSOM
D-13	A	DO	DO	DO	DO	DO	DO		DO
D-14	D	DO	PR. 3'-0" X 7'-0"	DO	DO	DO	DO		PART OF H.M. SIDELITE & TRANSOM REMOVABLE MUL. & ASTRAGAL
D-15	A	DO	3'-0" X 7'-0"	DO	DO	DO	DO		DO
D-16	A	DO	DO	DO	DO	DO	DO		ROUGH BUCK AND CAB. JAMB LOCATED IN BENT AREAWAY
D-17	A	DO	DO	DO	DO	DO	DO		BASEMENT TO CRAWL SPACE



JAMB DETAILS SCALE: 3\"/>

GROUND FLOOR PLAN SCALE: 1/8\"/>

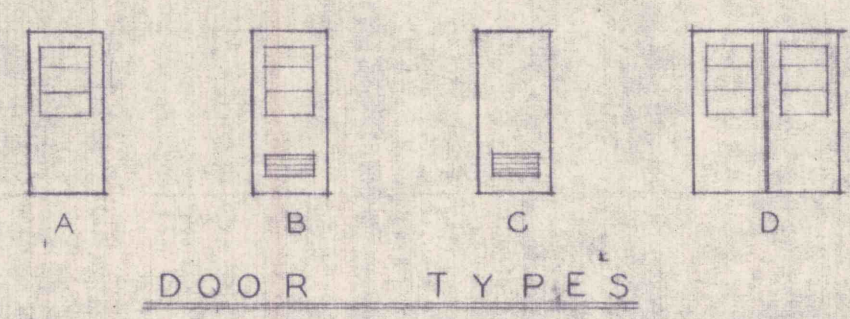
LEGEND

- ▼ FURNISHED BY THE OWNER & INSTALLED BY THE GENERAL CONTRACTOR.
- \* BY THE PLUMBING CONTRACTOR.
- ▲ BY THE VENTILATING CONTRACTOR.

NOTES

- THE PREFABRICATED EXTERIOR SUPERSTRUCTURE SHELL INCLUDING THE STRUCTURAL FRAME, WALL SHEETING, ROOF SHEETING, AND INSULATION WILL BE FURNISHED BY THE OWNER AND ERECTED BY THE GENERAL CONTRACTOR.
- ALL EXTERIOR WINDOWS, DOORS, HARDWARE, TRANSOMS, FRAMES, SIDELITES, INSULATED PANELS AND WINDOW WALL TO BE FURNISHED BY THE OWNER AS PART OF THE PREFABRICATED EXTERIOR SUPERSTRUCTURE SHELL AND ERECTED BY THE GENERAL CONTRACTOR.
- SUSPENDED CEILING OVER SLEEPING QUARTERS, KITCHEN, TOILET RM., HALL, OFFICE, LABORATORY, CONTROL CENTER AND INSTRUMENT ROOM.

REVISIONS			
NO.	DESCRIPTION	DATE	BY



DOOR TYPES



**GANNETT FLEMING CORDDRY & CARPENTER, INC.**  
**ENGINEERS**  
 600 N. SECOND ST. HARRISBURG, PENNA.

**THE PENNSYLVANIA STATE UNIVERSITY**  
**CONSTRUCTION OF**  
**A MINE DRAINAGE TREATMENT PLANT**  
 HUSTON TOWNSHIP, CLEARFIELD CO., PA.

SHEET NO. **4**  
 DRAWING No. **I-17513**

JOB NO. **4590**  
 SCALE **AS SHOWN**  
 DATE **JUNE 1967**

DRAWN **C.B.**  
 TRACED **C.B.**  
 CHECKED **C.K.M.**  
 APPROVED **G.G.B.**  
 APPROVED